

Appendix

Georgia Counties

County	Date Founded	County Seat	Named For
Appling	1818	Baxley	Colonel Daniel Appling
Atkinson	1917	Pearson	General William Y. Atkinson
Bacon	1914	Alma	Augustus O. Bacon
Baker	1825	Newton	Colonel John Baker
Baldwin	1803	Milledgeville	Abraham Baldwin
Banks	1858	Homer	Dr. Richard E. Banks
Barrow	1914	Winder	David C. Barrow
Bartow	1832	Cartersville	General Francis S. Bartow
Ben Hill	1906	Fitzgerald	Benjamin H. Hill
Berrien	1856	Nashville	John M. Berrien
Bibb	1822	Macon	Dr. William W. Bibb
Bleckley	1912	Cochran	Logan E. Bleckley
Brantley	1920	Nahunta	William G. Brantley
Brooks	1858	Quitman	Preston S. Brooks
Bryan	1793	Pembroke	Jonathan Bryan
Bulloch	1796	Statesboro	Governor Archibald Bulloch
Burke	1777	Waynesboro	Edmund Burke
Butts	1825	Jackson	Captain Samuel Butts
Calhoun	1854	Morgan	John C. Calhoun
Camden	1777	Woodbine	Sir Charles Pratt, Earl of Camden
Candler	1914	Metter	Governor Allen D. Candler
Carroll	1826	Carrollton	Charles Carroll
Catoosa	1853	Ringgold	Cherokee Indian name
Charlton	1854	Folkston	Robert M. Charlton
Chatham	1777	Savannah	William Pitt, Earl of Chatham
Chattahoochee	1854	Cusseta	Chattahoochee River
Chattooga	1838	Summerville	Chattooga River
Cherokee	1831	Canton	Cherokee tribe
Clarke	1805	Athens	General Elijah Clarke
Clay	1854	Fort Gaines	Henry Clay

County	Date Founded	County Seat	Named For
Clayton	1858	Jonesboro	Augustin S. Clayton
Clinch	1850	Homerville	General Duncan L. Clinch
Cobb	1832	Marietta	Thomas W. Cobb
Coffee	1854	Douglas	General John E. Coffee
Colquitt	1856	Moultrie	Walter T. Colquitt
Columbia	1790	Appling	Christopher Columbus
Cook	1918	Adel	General Phillip Cook
Coweta	1826	Newnan	Coweta tribe
Crawford	1822	Knoxville	William H. Crawford
Crisp	1905	Cordele	Charles F. Crisp
Dade	1837	Trenton	Major Francis L. Dade
Dawson	1857	Dawsonville	William C. Dawson
Decatur	1823	Bainbridge	Commodore Stephen Decatur
DeKalb	1822	Decatur	Johann DeKalb
Dodge	1870	Eastman	William E. Dodge
Dooly	1821	Vienna	Colonel John Dooly
Dougherty	1853	Albany	Charles Dougherty
Douglas	1870	Douglasville	Stephen A. Douglas
Early	1818	Blakely	Governor Peter Early
Echols	1858	Statenville	Robert M. Echols
Effingham	1777	Springfield	Francis Howard, Lord Effingham
Elbert	1790	Elberton	Governor Samuel Elbert
Emanuel	1812	Swainsboro	Governor David Emanuel
Evans	1914	Claxton	General Clement A. Evans
Fannin	1854	Blue Ridge	Colonel James W. Fannin
Fayette	1821	Fayetteville	Marquis de Lafayette
Floyd	1832	Rome	General John Floyd
Forsyth	1832	Cumming	Governor John Forsyth
Franklin	1784	Carnesville	Benjamin Franklin
Fulton	1853	Atlanta	Hamilton Fulton
Gilmer	1832	Ellijay	Governor George R. Gilmer
Glascocock	1857	Gibson	General Thomas Glascock
Glynn	1777	Brunswick	John Glynn
Gordon	1850	Calhoun	William W. Gordon
Grady	1905	Cairo	Henry W. Grady
Greene	1786	Greensboro	General Nathaniel Greene
Gwinnett	1818	Lawrenceville	Governor Button Gwinnett
Habersham	1818	Clarksville	Major Joseph Habersham
Hall	1818	Gainesville	Governor Lyman Hall
Hancock	1793	Sparta	John Hancock
Haralson	1856	Buchanan	General Hugh A. Haralson
Harris	1827	Hamilton	Charles Harris
Hart	1853	Hartwell	Nancy Morgan Hart

County	Date Founded	County Seat	Named For
Heard	1830	Franklin	Governor Stephen Heard
Henry	1821	McDonough	Patrick Henry
Houston	1821	Perry	Governor John Houstoun
Irwin	1818	Ocilla	Governor Jared Irwin
Jackson	1796	Jefferson	Governor James Jackson
Jasper	1807	Monticello	Sergeant William Jasper
Jeff Davis	1905	Hazlehurst	Jefferson Davis
Jefferson	1796	Louisville	President Thomas Jefferson
Jenkins	1905	Millen	Governor Charles J. Jenkins
Johnson	1858	Wrightsville	Governor Herschel V. Johnson
Jones	1807	Gray	James Jones
Lamar	1920	Barnesville	Lucius Q. C. Lamar
Lanier	1920	Lakeland	Sidney Clapton Lanier
Laurens	1807	Dublin	Colonel John Laurens
Lee	1826	Leesburg	General Henry Lee
Liberty	1777	Hinesville	Concept of freedom and liberty
Lincoln	1796	Lincolnton	General Benjamin Lincoln
Long	1920	Ludowici	Dr. Crawford W. Long
Lowndes	1825	Valdosta	William J. Lowndes
Lumpkin	1832	Dahlonega	Governor Wilson Lumpkin
McDuffie	1870	Thomson	George McDuffie
McIntosh	1793	Darien	McIntosh family
Macon	1837	Oglethorpe	General Nathaniel Macon
Madison	1811	Danielsville	President James Madison
Marion	1827	Buena Vista	General Francis Marion
Meriwether	1827	Greenville	General David Meriwether
Miller	1856	Colquitt	Andrew J. Miller
Mitchell	1857	Camilla	Gen. Henry Mitchell/Gov. David Mitchell (?)
Monroe	1821	Forsyth	President James Monroe
Montgomery	1793	Mount Vernon	Major General Richard Montgomery
Morgan	1807	Madison	General Daniel Morgan
Murray	1832	Chatsworth	Thomas W. Murray
Muscogee	1825	Columbus	Muscogee (Creek) Indians
Newton	1821	Covington	Sergeant John Newton
Oconee	1875	Watkinsville	Oconee River
Oglethorpe	1793	Lexington	James Edward Oglethorpe
Paulding	1832	Dallas	John Paulding
Peach	1924	Fort Valley	Georgia peach
Pickens	1853	Jasper	General Andrew Pickens
Pierce	1857	Blackshear	President Franklin Pierce
Pike	1822	Zebulon	General Zebulon M. Pike
Polk	1851	Cedartown	President James K. Polk
Pulaski	1808	Hawkinsville	Count Casimir Pulaski

County	Date Founded	County Seat	Named For
Putnam	1807	Eatonton	General Israel Putnam
Quitman	1858	Georgetown	General John A. Quitman
Rabun	1819	Clayton	Governor William Rabun
Randolph	1828	Cuthbert	John Randolph
Richmond	1777	Augusta	Charles Lenox, Duke of Richmond
Rockdale	1870	Conyers	Rockdale Church (also underlying granite)
Schley	1857	Ellaville	Governor William Schley
Screven	1793	Sylvania	General James Screven
Seminole	1920	Donalsonville	Seminole tribe
Spalding	1851	Giffin	Thomas Spalding
Stephens	1905	Toccoa	Governor Alexander H. Stephens
Stewart	1830	Lumpkin	General Daniel Stewart
Sumter	1831	Americus	General Thomas Sumter
Talbot	1827	Talbotton	Governor Matthew Talbot
Taliaferro	1825	Crawfordville	Colonel Benjamin Taliaferro
Tattnall	1801	Reidsville	Governor Josiah Tattnall, Jr.
Taylor	1852	Butler	President Zachary Taylor
Telfair	1807	McRae	Governor Edward Telfair
Terrell	1856	Dawson	Dr. William Terrell
Thomas	1825	Thomasville	General Jett Thomas
Tift	1905	Tifton	Nelson Tift
Toombs	1905	Lyons	Robert Toombs
Towns	1856	Hiawassee	Governor George W. Towns
Treutlen	1917	Soperton	Governor John A. Treutlen
Troup	1825	LaGrange	Governor George M. Troup
Turner	1905	Ashburn	Captain Henry G. Turner
Twiggs	1809	Jeffersonville	General John Twiggs
Union	1832	Blairsville	Union loyalty
Upson	1824	Thomaston	Stephen Upson
Walker	1833	LaFayette	Major Freeman Walker
Walton	1818	Monroe	Governor George Walton
Ware	1824	Waycross	Nicholas Ware
Warren	1793	Warrenton	General Joseph Warren
Washington	1784	Sandersville	President George Washington
Wayne	1803	Jesup	General Anthony Wayne
Webster	1853	Preston	Daniel Webster
Wheeler	1912	Alamo	General Joseph E. Wheeler
White	1857	Cleveland	David Thomas White
Whitfield	1851	Dalton	Reverend George Whitefield
Wilcox	1857	Abbeville	Major General Mark Wilcox
Wilkes	1777	Washington	John Wilkes
Wilkinson	1803	Irwinton	General James Wilkinson
Worth	1853	Sylvester	General William J. Worth

Georgia Governors

TRUSTEES

Name	Birthplace	Term
James Edward Oglethorpe, Trustee	England	1733 - 1743
William Stephens, President	England	1743 - 1751
Henry Parker, President	England	1751 - 1752
Patrick Graham, President	England	1752 - 1754

ROYAL PERIOD

Name	Birthplace	Term
John Reynolds	England	1754 - 1757
Henry Ellis	Ireland	1757 - 1760
James Wright	England	1760 - 1776

PROVISIONAL GOVERNORS

Name	Birthplace	Term	Political Party
William Ewen (President, Council of Safety)	England	1775	
George Walton (President, Executive Council)	Virginia	1775 - 1776	Whig
Archibald Bulloch (President, Executive Council)	South Carolina	1776 - 1777	Whig
Button Gwinnett (President, Executive Council)	England	1777	Whig

STATE GOVERNORS

Name	Birthplace	Term	Political Party
John Adam Treutlen	Austria	1777 - 1778	Whig
John Houstoun	Georgia	1778 - 1779	Whig
William Glascock (President, Executive Council)	Virginia	1779	
Seth John Cuthbert (President, Supreme Executive Council)	unknown	1779	
John Wereat (President, Executive Council)	England	1779 - 1780	Whig
George Walton	Virginia	1779 - 1780	Whig
Richard Howley	Georgia	1780	Whig
Stephen Heard (President, Executive Council)	Virginia	1780 - 1781	Whig
Myrick Davies (President, Executive Council)	unknown	1780 - 1781	
Nathan Brownson	Connecticut	1781 - 1782	Whig
John Martin	Rhode Island	1782 - 1783	
Lyman Hall	Connecticut	1783 - 1784	
John Houstoun	Georgia	1784 - 1785	
Samuel Elbert	South Carolina	1785 - 1786	
Edward Telfair	Scotland	1786 - 1787	
George Mathews	Virginia	1787 - 1788	
George Handley	England	1788 - 1789	
George Walton	Virginia	1789	
Edward Telfair	Scotland	1789 - 1793	
George Mathews	Virginia	1793 - 1796	
Jared Irwin	North Carolina	1796 - 1798	Democratic Republican
James Jackson	England	1798 - 1801	Democratic Republican
David Emanuel (President, State Senate)	Pennsylvania	1801	Democratic Republican
Josiah Tattnall, Jr.	Georgia	1801 - 1802	Democratic Republican
John Milledge	Georgia	1802 - 1806	Democratic Republican
Jared Irwin (President, State Senate)	North Carolina	1806 - 1809	Democratic Republican
David Brydie Mitchell	Scotland	1809 - 1813	Democratic Republican

Name	Birthplace	Term	Political Party
Peter Early	Virginia	1813 - 1815	Democratic Republican
David Brydie Mitchell	Scotland	1815 - 1817	Democratic Republican
William Rabun (President, State Senate)	North Carolina	1817 - 1819	Democratic Republican
Matthew Talbot (President, State Senate)	Virginia	1819	Democratic Republican
John Clark	North Carolina	1819 - 1823	Democratic Republican
George Michael Troup	Georgia	1823 - 1827	Democratic Republican
John Forsyth	Virginia	1827 - 1829	Democratic Republican
George Rockingham Gilmer	Georgia	1829 - 1831	Democrat
Wilson Lumpkin	Virginia	1831 - 1835	Democrat
William Schley	Maryland	1835 - 1837	Democrat
George Rockingham Gilmer	Georgia	1837 - 1839	Whig
Charles James McDonald	South Carolina	1839 - 1843	Democrat
George Walter Crawford	Georgia	1843 - 1847	Whig
George Washington Towns	Georgia	1847 - 1851	Democrat
Howell Cobb	Georgia	1851 - 1853	Democrat
Herschel Vespasian Johnson	Georgia	1853 - 1857	Democrat
Joseph Emerson Brown	South Carolina	1857 - 1865	Democrat
James Johnson (Provisional)	South Carolina	1865	Democrat
Charles Jones Jenkins	South Carolina	1865 - 1868	Democrat
Thomas Howard Ruger (Military)	New York	1868	
Rufus Brown Bullock	New York	1868 - 1871	Republican
Benjamin Conley (President, State Senate)	New Jersey	1871 - 1872	Republican
James Milton Smith	Georgia	1872 - 1877	Democrat
Alfred Holt Colquitt	Georgia	1877 - 1882	Democrat
Alexander Hamilton Stephens (President, State Senate)	Georgia	1882 - 1883	Democrat
James Stoddard Boynton (President, State Senate)	Georgia	1883	Democrat
Henry Dickerson McDaniel	Georgia	1883 - 1886	Democrat
John Brown Gordon	Georgia	1886 - 1890	Democrat

Name	Birthplace	Term	Political Party
William Jonathan Northen	Georgia	1890 - 1894	Democrat
William Yates Atkinson	Georgia	1894 - 1898	Democrat
Allen Daniel Candler	Georgia	1898 - 1902	Democrat
Joseph Meriwether Terrell	Georgia	1902 - 1907	Democrat
Hoke Smith	North Carolina	1907 - 1909	Democrat
Joseph Mackey Brown	Georgia	1909 - 1911	Democrat
Hoke Smith	North Carolina	1911	Democrat
John Marshall Slaton (President, State Senate)	Georgia	1911 - 1912	Democrat
Joseph Mackey Brown	Georgia	1912 - 1913	Democrat
John Marshall Slaton	Georgia	1913 - 1915	Democrat
Nathaniel Edwin Harris	Tennessee	1915 - 1917	Democrat
Hugh Manson Dorsey	Georgia	1917 - 1921	Democrat
Thomas William Hardwick	Georgia	1921 - 1923	Democrat
Clifford Mitchell Walker	Georgia	1923 - 1927	Democrat
Lamartine Griffin Hardman	Georgia	1927 - 1931	Democrat
Richard Brevard Russell, Jr.	Georgia	1931 - 1933	Democrat
Eugene Talmadge	Georgia	1933 - 1937	Democrat
Eurith Dickinson Rivers	Arkansas	1937 - 1941	Democrat
Eugene Talmadge	Georgia	1941 - 1943	Democrat
Ellis Gibbs Arnall	Georgia	1943 - 1947	Democrat
Herman Eugene Talmadge	Georgia	1947	Democrat
Melvin Earnest Thompson	Georgia	1947 - 1948	Democrat
Herman Eugene Talmadge	Georgia	1948 - 1955	Democrat
Samuel Marvin Griffin	Georgia	1955 - 1959	Democrat
Samuel Ernest Vandiver, Jr.	Georgia	1959 - 1963	Democrat
Carl Edward Sanders	Georgia	1963 - 1967	Democrat
Lester Garfield Maddox	Georgia	1967 - 1971	Democrat
James Earl Carter	Georgia	1971 - 1975	Democrat
George Dekle Busbee	Georgia	1975 - 1983	Democrat
Joe Frank Harris	Georgia	1983 - 1991	Democrat
Zell Bryan Miller	Georgia	1991 - 1999	Democrat
Roy Eugene Barnes	Georgia	1999 - 2002	Democrat
George Ervin "Sonny" Perdue	Georgia	2003 - 2011	Republican
John Nathan Deal	Georgia	2011 -	Republican

An Atlas of Georgia



An Atlas of Georgia



An Atlas of Georgia



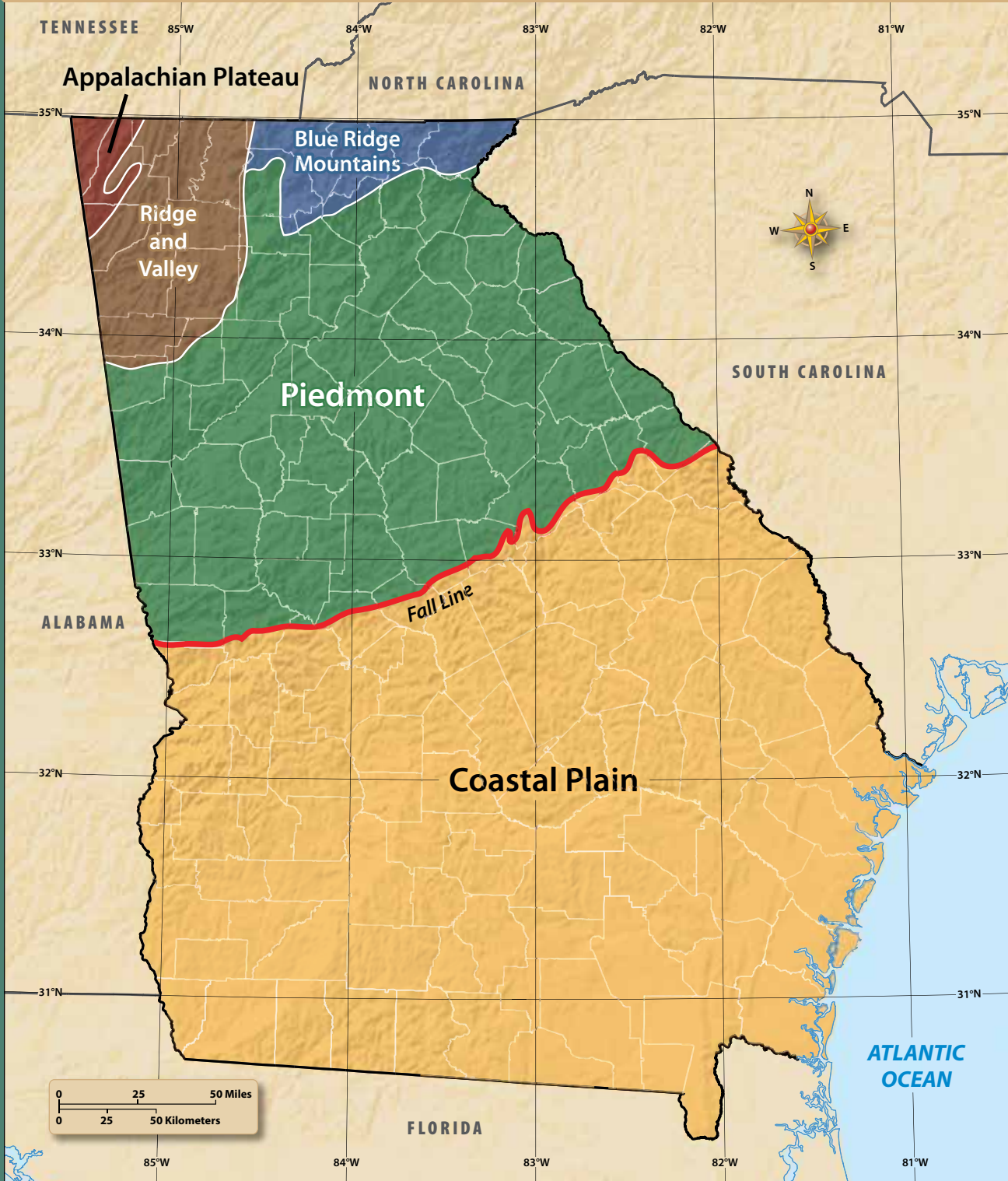
An Atlas of Georgia



**Georgia in the
United States**

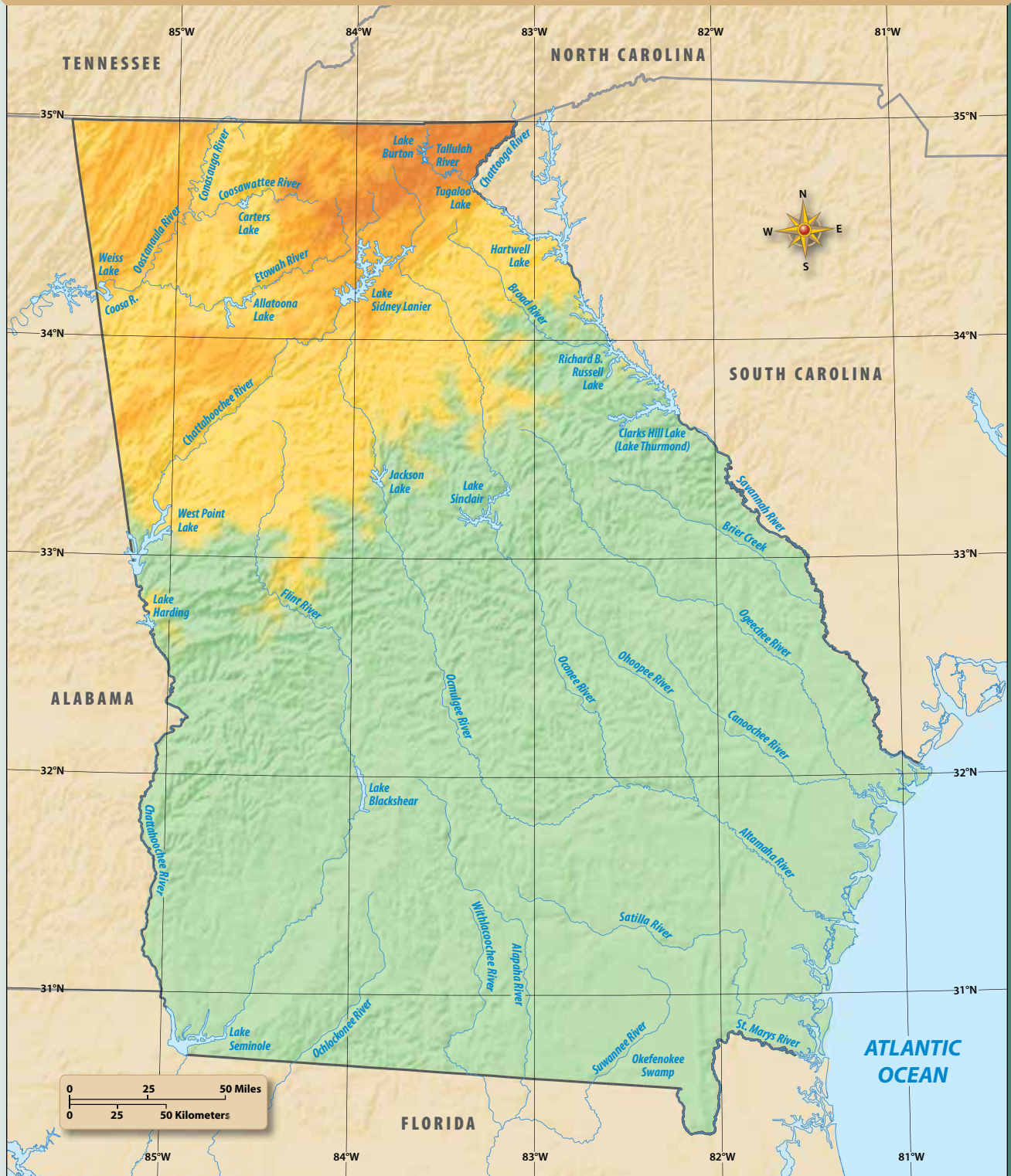
An Atlas of Georgia

Geographic Regions



An Atlas of Georgia

Major Rivers and Lakes



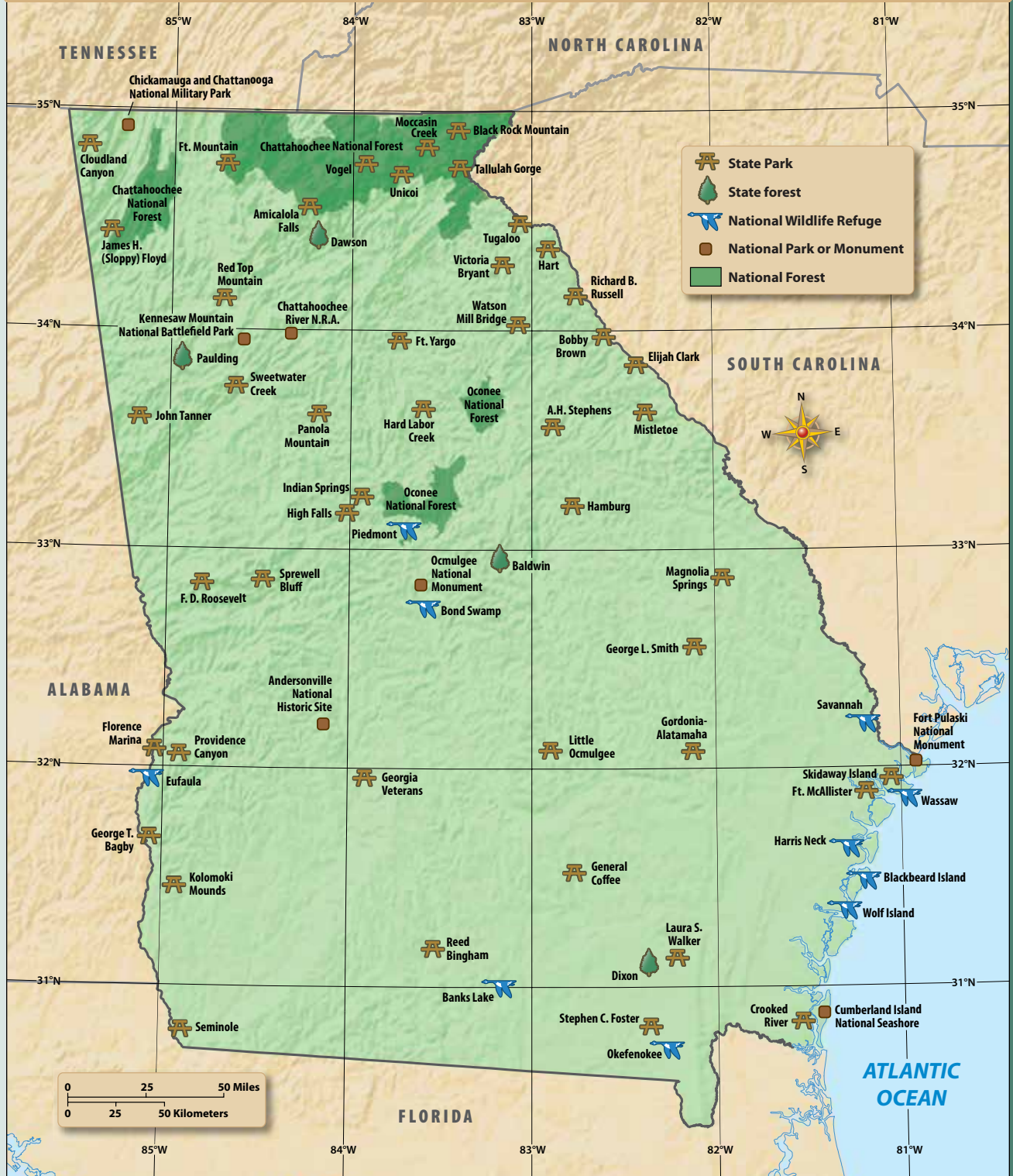
An Atlas of Georgia

Major Roads and Highways



An Atlas of Georgia

Parks and Forests



An Atlas of Georgia

Counties and County Seats



Glossary

This glossary contains terms that are in **bold color** in the textbook and gives the definition of each term that is relevant to its use in the text. The chapter in which the term appears is shown in parentheses following the definition.

A

- abolitionist** one who wants to do away with something, particularly slavery in the 1800s (15)
- accredit** to give official approval to, such as an educational institution (23)
- adjudicatory hearing** a step in the juvenile justice system that is somewhat like a trial (6)
- agribusiness** farming and the businesses associated with farming (26)
- ally** a person, group, or country who joins with another for a common interest (9)
- amend** to change or make an addition to (3)
- annex** to add on, such as adding territory to an existing town, city, or state (15)
- antebellum** the period before the Civil War (15)
- Antifederalists** those who opposed a strong central government and did not favor ratification of the U.S. Constitution (13)
- anti-Semitism** anti-Jewish prejudice (19)
- Appalachian Plateau region** a geographic region of Georgia in the far northwestern corner of the state (1)
- appeal** to take a case to a higher court for rehearing (5)
- apportionment** the process of determining how many constituents are represented in each voting district (3)
- appropriate** to set aside for a specific purpose (3)
- aquifer** an underground natural water storage tank (1)
- archaeology** the science of locating and studying artifacts to learn about the lives of early peoples (8)

- armistice** an agreement to stop fighting while coming to terms for a peace treaty (20)
- arraign** to go before a superior court judge who reads the charges against the suspect (5)
- arson** setting a fire (15)
- Articles of Confederation** the first constitution of the United States; ratified in 1781, it created a weak federal government and was eventually replaced (13)
- artifacts** items such as tools, pottery, remains of structures, and other items that are on or underneath Georgia's soil (8)
- artisan** a skilled craftsperson (9)
- assembly line** a series of stations of workers, machines, and equipment at which people and machines add to, or assemble, the parts of a product (21)

B

- backcountry** the land away from the coast (8)
- bail** property or money deposited to ensure that a person released from jail will return for a court appearance (2)
- barrier island** an island that lies off the coast and protects the mainland by blocking the strong winds and waves (1)
- barter** to trade or exchange goods or services without the use of money (22)
- bicameral** refers to a two-house legislature (3)
- bill** a proposed law (3)
- Bill of Rights** the first ten amendments to the U.S. Constitution (13)
- Black Codes** a set of laws passed by Georgia, and most southern states, after the Civil War to restrict the rights of the freedmen (17)
- black market** illegal sales of rationed goods (23)
- blackout** a period of darkness enforced as a precaution against air raids (23)
- blockade** to obstruct or prevent access to (16)
- Blue Ridge Mountains region** a geographic region

of Georgia located in the northeastern part of the state (1)

boll weevil a small, grayish, long-snouted beetle that attacked the cotton plant (21)

bond a document that serves as proof of a debt and that requires the payment of the debt plus interest (16)

border states free states and slave states which shared borders (15)

Bourbon Triumvirate the name given to three Georgia leaders—Joseph E. Brown, Alfred H. Colquitt, and John B. Gordon—after Reconstruction ended (18)

boycott a protest in which people refuse to buy certain items until specific conditions are met (11)

broilers chickens weighing less than two and a half pounds (26)

Brown v. Board of Education of Topeka, Kansas a U.S. Supreme Court case in which the Court declared that the separate-but-equal schools were unconstitutional (24)

budget a plan for receiving and spending money (3)

C

canal a manmade waterway that connects one body of water to another (14)

capital felony a crime that is punishable by death; murder is a capital felony (5)

carpetbagger a negative nickname given to northerners who moved to the South after the Civil War (17)

cash crop a crop grown to be sold for income (10)

casualty a soldier killed, wounded, or missing (16)

caucus a group of political party members (3)

cede to surrender, especially land or territory (10)

census the official count of the population (3)

centennial describes one hundred years (26)

certificate of deposit a bank certificate that draws interest and is written for a specific period of time (26)

charter a written document that gives a municipality the authority to exist and function (7); a legal document that grants special rights and sets up the rules under which something operates (9)

checks and balances the system that gives each branch of government some ways to keep the other two branches from becoming too powerful (2)

civil law a law that deals with the relationships between and among individuals (5)

Civil Rights Act of 1964 federal legislation that re-

fused federal funds to any school system that did not end segregation; among other things, the legislation made racial discrimination in public places, such as theaters, restaurants, and hotels, illegal (24)

civil service a system of government employment in which a person would be hired based on qualifications for a particular job, not because of political connections (23)

climate the average weather of a region over a long period of time (1)

Coastal Plain region a geographic region of Georgia that runs from the coast to the Piedmont region (1)

Cold War a period of hostility between the United States and the Soviet Union following World War II (26)

colony a geographical area controlled by a distant country (8)

Compromise of 1850 legislation passed by Congress by which California entered the Union as a free state, slave trading was ended in the District of Columbia, Texas gave up its claims to New Mexico in exchange for money, residents of the territories of New Mexico and Utah would be able to determine whether they wanted slavery, and a stronger Fugitive Slave Act was enacted (15)

commute to change a court sentence to one that is less severe (19)

Confederate States of America the name given to the government formed by the southern states that seceded from the Union in the early 1860s (16)

confederation a loose organization of the states with a weak central government and powerful state governments (11)

conservative one who wants fewer changes (12)

conserve to avoid the wasteful or destructive use of land or a natural resource (4)

consolidated joined (27)

consolidated government a form of local government that has formally merged its county operations and governance with one or more of the cities in the county (7)

constituent a person in a legislator's district (3)

constitution the fundamental plan of operation for a government (2)

constitutional officer a state official whose office is specifically designated in the Georgia constitution (4)

containment a U.S. Cold War policy of trying to keep

communism (the political/economic system of the Soviet Union) from spreading to new places and keep it contained to the areas where it already was (26)

convict lease system a system in Georgia after the Civil War in which prisoners were leased to companies for their labor; companies were supposed to provide housing and food (17)

co-op a cooperative buying store that allows members to buy goods and equipment directly from producers (18)

cooperative an organization owned by and operated for the benefit of those using its services (22)

cotton gin a device, invented by Eli Whitney, to remove the seeds from the cotton boll (14)

Council of Safety a group set up in 1775 to oversee the local committees and to take on the powers of the royal governor and his council (11)

council-manager form a form of municipal government in which voters elect a city council, which enacts city ordinances and sets the city's policies and that hires a city manager responsible for the day-to-day operations of the city (7)

county a subdivision of the state set up to carry out certain governmental functions; Georgia has 159 counties (7)

county seat the city or town where the county government is located (7)

county unit system a procedure for political primaries in which candidates for statewide office were chosen not by the overall popular votes but by the unit votes of each county; counties were divided into urban, town, and rural counties; rural counties, because there were more of them, outvoted the more populous urban counties; established by the Neill Primary Act (18)

Court of Appeals the second-highest ranking court in the Georgia court system; an appellate court (5)

crackers a group of often illiterate and uneducated farmers who moved from Virginia and the Carolinas to the middle and western parts of the colony (10)

credit the ability to buy something now and pay for it later or over a period of time (13)

crime a serious offense, regarded as an injury to society (5)

criminal law a law that protects society by making certain actions illegal (5)

crop lien a system of credit which allowed farmers

to receive commodities such as food, supplies, and seeds, on loan (or credit) and pay this debt back after their crop was harvested and sold. Therefore, there was a lien against the crop. The amount of credit that was received was based on the estimated value of the crop. (17)

culture the beliefs, traditions, and way of life of a group of people (8)

curriculum a course of study (27)

D

Declaration of Independence document issued by the Second Continental Congress by which the delegates stated their intention to be free of British rule (11)

defendant a person accused of a crime or person being sued in a civil action (5)

deficit a shortage of funds (4)

delinquent act the term used to describe an act that would be a crime if committed by an adult (6)

denomination an organized religious group (10)

depression a severe economic downturn; businesses and banks fail, farmers lose their land, people lose their jobs (14)

deprived child the legal term for a child under the age of eighteen who is without adequate food, shelter, or protection (6)

dictator a leader with absolute power (23)

discrimination unfair treatment of a person or group because of prejudice (17)

disfranchise to take the right to vote away from someone or some group (19)

dispositional hearing a step in the juvenile justice system that is similar to sentencing in adult court (6)

diversify to increase the variety of products (20)

draft a compulsory enrollment for military service (16)

driver an older slave that a plantation owner thought was loyal and who supervised other slaves (15)

drought a prolonged period of dry weather (1)

due process legal steps that ensure fair treatment under the law (5)

E

Electoral College a group of representatives who formally elect the president and vice president; each state has electors equal to the number of its representatives in Congress (13)

elevation the height of something above sea level (1)
Emancipation Proclamation a document issued by President Lincoln in 1862 that declared freedom for slaves in states “in rebellion”; that made it possible to free slaves as the Union army took control of areas in the Confederate States (16)
entrepreneur one who organizes, operates, and assumes the risk for a business venture (21)
erosion the wearing away of the land by the action of wind or water (1)
estuary the wide part of the river where its current meets the tidal ebbs and flows (1)
expedition a journey for a specific purpose (8)
expenses money spent for various purposes (26)

F

faction a group within a larger group (12)
factor one who takes a farmer’s crops and arranges for their sale and shipment to other places (14)
Fall Line the point at which hilly or mountainous lands meet the coastal plain (1)
Farmers’ Alliance a farmers organization founded in the late 1870s; it worked for lower railroad freight rates, lower interest rates, and a change in the government’s tight money policy (18)
fascism a philosophy of government characterized by a dictator, it believes in the superiority of a particular group, and it works to benefit the government, although private property remains in private hands (23)
fault a break in the Earth’s crust that occurs when one part of Earth’s surface folds or is thrust up over the surface next to it (1)
federalism a system in which the national and state governments divide both powers and responsibilities over the same territory and the same people (2)
Federalists those who supported a strong national government and ratification of the U.S. Constitution (13)
felony a serious crime such as murder or burglary punishable by time in prison (2)
Fifteenth Amendment an amendment to the U.S. Constitution, ratified in 1870, which said race could not be used to deny voting rights (17)
fiscal year the budgetary spending year; Georgia’s fiscal year begins July 1 and ends June 30 (3)
Fourteenth Amendment an amendment to the U.S. Constitution, ratified in 1868, that granted citizenship to all born in the United States; this broad language

included former slaves (17)

fraud an act of deceiving or misrepresenting (18)
free enterprise an economic system in which privately owned businesses operate without government interference beyond what is necessary to ensure fairness in competition, consumer protection, and balance in trade (26)
free-soil the idea that slavery should not be interfered with where it already existed and that the national government had the right to keep it from spreading into new territories (15)
free state a state that did not allow slavery (15)
free trade international trade free of any trade barriers (protective tariffs or quotas) on the amount of goods that can be bought and sold (26)
freedmen the newly freed slaves (17)
Freedmen’s Bureau a federal government organization established in 1865 that helped the newly freed slaves after the Civil War (17)
French and Indian War the war that took place in North America from 1754 to 1763 in which the French and their Indian allies fought the British for control of the land west of the Appalachian Mountains; known as Seven Years War in Europe (10)

G

genocide the deliberate killing of a particular group of people (23)
Georgia Performance Standards legislation passed in 2002 and implemented beginning in 2005 that defined the skills and knowledge that students must develop to complete the curriculum and what is expected for successful completion (27)
Georgia Platform a document issued by a state convention in 1850 that accepted the Compromise of 1850 but agreed to resist if the North did not live up to its obligations or if it hindered slavery (15)
G. I. Bill legislation passed by Congress in 1944 that paid the tuition of those who had served in the war; the Serviceman’s Readjustment Act (27)
globalization occurs when economies of the world’s countries have become more connected and more dependent on each other (26)
government an organization that has the power to make and enforce laws (2)
governor the head of the executive branch of the state government (4)

graduated income tax a tax on a person's income in which the higher a person's income, the higher the percentage of tax that person would pay (18)

grandfather clause a clause inserted in the Georgia constitution in 1908 that allowed a man to register to vote who had fought for the United States in a war or for the Confederacy in the Civil War or was a descendant of such a person; the clause disfranchised most of Georgia's African Americans (19)

grand jury a group of citizens who examine a case record and evidence to determine whether there is sufficient evidence to charge a suspect with a crime (5)

grassroots campaign a campaign that focuses on local or person-to-person activities (25)

Great Compromise a compromise at the Constitutional Convention in which the states agreed that the House of Representatives would be based on proportional representation and the Senate would have equal representation (13)

Great Depression a severe economic downturn that began with the stock market crash of 1929 and lasted until World War II (21)

Great Migration the movement of southern African Americans from the South to the North; it began after World War I and lasted until the 1960s (19)

guardian ad litem a person appointed by the juvenile court to represent the child's best interest in any legal proceedings where parents' rights and the child's rights appear to be at odds (6)

H

headright system a system of distributing land by which each "head" of a household received one hundred acres plus fifty additional acres for each member of the household (10)

Holocaust the name given to the systematic killing of 6 million European Jews during World War II (23)

home rule local self-government (7)

horticulture cultivation of plants for food on a smaller scale than agriculture (8)

hurricane a tropical storm spawned when waters of 80°F or more transform the heat energy of tropical waters into strong winds and heavy waves (1)

I

immigrant one who moves into a country to live (10)

immunity natural resistance to disease (8)

impressment the practice of seizing individuals to serve in the British navy (14)

income the money that an individual acquires (26)

incorporated describes a municipality created by the legislature (7)

indentured servant a person who sold his or her labor for a period of years in return for passage to the New World and support during the period of servitude (9)

indictment a formal accusation of a crime (5)

inflation a general increase in the prices of goods and services over time (16)

informal adjustment used to set up family counseling and a plan of supervision for an unruly child (6)

installment plan a purchase plan that allows consumers to make regular payments for the item purchased over a period of time (21)

intake the process in the juvenile justice system in which a court officer investigates the charges and determines the next step (6)

integration to bring people of different racial or ethnic groups into society or an organization as equals (24)

interest money paid for the use of money (26)

interest group an association of people who share a common goal or interest that they hope to achieve by influencing public policy (2)

interstate highway a limited-access, multilane, multiple-state highway with interchanges of on and off ramps with entry and exit lanes (26)

Intolerable Acts a series of laws passed by Parliament to punish Boston and the Massachusetts Colony after the Boston Tea Party (11)

investment money spent on something with the goal of making a profit (26)

isolationism not getting involved in the affairs of other nations (20)

J

Jim Crow laws laws passed in the South calling for segregation (19)

judicial review the ability of the courts to set aside the actions of the legislative or executive branches of any government agency (5)

jurisdiction the authority of a court to decide a case (5)

jury a group of citizens chosen to hear evidence in a

legal case and make a decision based on that evidence (5)

juvenile a citizen under the age of seventeen (6)

juvenile court a limited jurisdiction court in the Georgia court system that concentrates attention on the treatment of juveniles (5)

juvenile delinquent someone under age seventeen who has committed a delinquent act and is thought to be in need of treatment or rehabilitation (6)

K

Kansas-Nebraska Act 1854 legislation that created the territories of Kansas and Nebraska and that contained a clause on popular sovereignty that negated the Compromise of 1850 (15)

kaolin a white clay used in the manufacture of paper and other products (26)

Ku Klux Klan a secret racist organization, formed in 1866, that worked to keep the freedmen from voting after the Civil War (17)

L

labor union an organization of workers formed to improve their wages, benefits, and working conditions by bargaining with management (22)

libel a false written or printed statement that harms a person's reputation (2)

lieutenant governor an elected official who serves as a deputy to the governor; also serves as president of the Georgia Senate (4)

limited government the concept that government has only the duties and powers granted to it by the people being governed (2)

line item veto allows the governor to veto specific spending proposals that he or she considers to be wasteful without vetoing the entire appropriations bill (3)

lobbyist one who is paid to represent an interest group and to influence elected officials to vote for laws that the interest group supports or to defeat laws that the interest group opposes (2)

local independent authority a special-purpose government that generates its own financing through revenue bonds (7)

lottery a plan to award something, such as land, on the basis of chance (14)

Loyalist one who remained loyal to Great Britain and

King George; also called Tory (11)

lynching occurs when a mob of people murder someone, usually by hanging (19)

M

magistrate court a limited jurisdiction county court in the Georgia court system; handles civil cases and preliminary hearings for criminal cases (5)

majority 50 percent of the votes plus (at least) one vote (2)

Malcontent a complainer; one who was not happy with the Georgia colony rules (9)

manifest destiny the belief that the United States was destined to expand from the Atlantic to the Pacific Ocean (15)

marsh a low-lying wet area that often has grasses growing in it (1)

Medicaid a jointly funded federal and state program that provides health care for individuals whose incomes are below a certain level (4)

mercantilism an economic policy in which a country exports more than it imports; colonies are expected to supply raw materials to the mother country (9)

metropolitan area a large central city surrounded by smaller communities with no green space between them (26)

middleman a merchant who buys and sells goods, for a profit, that others produce (8)

militia a force of citizen-soldiers (9)

Minimum Foundation Program for Education legislation passed in 1949 that raised more money for schools through a 3 percent sales tax (24)

minimum wage the least amount an employer can pay an employee for a certain number of hours worked (22)

mint a factory that makes gold and silver money (16)

misdeemeanor a less serious crime punishable by less than a year in prison, a fine, or both (5)

mission a settlement where priests could live and work in major Indian towns (8)

Missouri Compromise legislation passed by Congress in 1820 by which Maine entered the Union as a free state, Missouri entered the Union as a slave state, and slavery was prohibited north of the southern border of Missouri in the rest of the Louisiana Purchase land (15)

monopoly the exclusive ownership or control of a

product or an industry by one company or group (3)
municipal corporation a city or municipality (7)
municipal court a court in a city or town that handles traffic offenses, violations of local regulations, and some misdemeanor cases (5)
mutual fund a collection of stocks and bonds into which many investors pool their money and buy shares (26)

N

National Association for the Advancement of Colored People (NAACP) an organization formed in 1909 by white liberals and members of the Niagara Movement to work for the rights of African Americans (19)
naval stores turpentine, rosin, tar, and pitch (10)
neutral to not take sides in a disagreement (12)
New Deal the name given to the programs enacted by Congress in the 1930s to bring about economic recovery, relieve the suffering of the unemployed, reform defects in the economy, and improve society (22)
New South a term coined by Henry W. Grady and used to describe the southern states after Reconstruction where “scientific” farming and more industry would put the South on a new economic path (20)
Nineteenth Amendment an amendment to the U.S. Constitution, ratified in 1920, that gave women the right to vote (18)
nomad one who moves around from place to place (8)
nonpartisan not tied to a political party (2)
nullification the idea of voiding and not following national laws within a state (15)

O

one-person, one-vote principle the policy that every citizen’s vote should be equal to every other citizen’s vote no matter where the person lives (25)
ordinance a bill or local law (7)
overdraft writing a check for more than is in a checking account (26)

P

pacifist one who believes that any kind of fighting or violence is wrong (9)
palisades walls made of sharpened poles or logs stuck into the ground standing up (8)
pandemic a worldwide epidemic (20)

parish in colonial Georgia, a religious and government district (10)
parole the decision to conditionally release an offender from prison after he or she has served a certain part of his or her prison sentence (4)
pasteurization the process of heating milk to kill bacteria that cause disease (26)
Patriots those colonists who wanted independence from Great Britain; also called Whigs (11)
Piedmont region a geographic region of Georgia that lies between Georgia’s mountains and its Coastal Plain (1)
philanthropist one who gives money or other help to improve the quality of human life (27)
plaintiff one who has a “right of action” against a wrongdoer in a civil case (5)
plantation a large farm (8)
platform a statement of the principles and policies a political party supports (16)
plea an accused person’s formal response of “guilty” or “not guilty” to a criminal charge (5)
plural executive system a system in which voters elect a governor, a lieutenant governor, and state executive officers (4)
political ideology a consistent set of beliefs about what policies government ought to follow (2)
political party an organized group of people who share common ideals and who work to elect members of their party to public office (2)
poll tax a tax paid to be able to vote (17)
polling place a place to vote (2)
popular sovereignty the ability of the people of an area to decide upon an issue, such as whether they would allow slavery (15)
Populist Party a political party formed in the late 1800s by farmers and labor organizations (18)
preamble the introductory statement of a constitution (2)
precinct a voting district (2)
precipitation rain, hail, sleet, or snow (1)
prejudice an irrational hostility toward another person, group, or race (19)
probable cause a reasonable expectation that evidence will be found (2)
probate court a court in the Georgia court system that deals with wills and estates (property and possessions) of deceased persons (5)

probation a form of punishment in the juvenile justice system that is served outside of, or in some cases, instead of confinement (6)

Proclamation of 1763 a order issued by the British government that forbade the colonists from moving west of the Appalachian Mountains (11)

profit the amount left after all costs, or expenses, are paid (10)

progressivism a movement for reform in the late 1800s and early 1900s whose members believed that government was best able to deal with the problems brought on by industrialization and urbanization (18)

proprietor an owner (9)

provincial congress a meeting of representatives from Georgia's parishes that generally opposed British policies in the period before the Revolutionary War (11)

purchasing power the ability to buy goods and services, usually measured in terms of income (21)

Q

Quality Based Education a legislative program passed in 1986 that standardized curriculum for all schools in the state, implemented statewide testing of students, and required accountability performance testing to certify public school teachers (27)

quorum the number of members who must be present in order to conduct business (3)

R

racism abusive or discriminatory behavior toward members of another race (16)

radical one who wants the most change (12)

ratification official approval (2)

rationing limiting the purchase of something (23)

reasonable suspicion a legal standard that is lower than probable cause but more than a "hunch" (6)

recession an economic slowdown; characterized by decreased demand for products or services, decreased sales, increased unemployment, and decreased wages and salaries (22)

Reconstruction the period immediately after the Civil War when the South rebuilt and the southern states returned to the Union (17)

Redeemers Georgia Democrats who, in the period immediately following Reconstruction, worked to

"save" the state from the North's Reconstruction policies (17)

redistrict to redraw the boundaries of voting districts to account for population changes (3)

referendum a direct vote by the people on an issue (2)

region an area on Earth's surface with common characteristics, such as soil, vegetation, climate, landforms, recreation, or economic opportunities (1)

regional commissions groups that help local governments with services that they may not be able to staff themselves (7)

regional youth detention center a holding facility for juveniles; RYDC (6)

relief money and goods, loans and jobs, given to people in specific need (22)

reparations compensation for war damages (23)

repeal to revoke or withdraw formally or officially (11)

repossess to take back the ownership of (26)

representative democracy a government in which elected leaders make decisions on behalf of the people they represent (2)

reservoir a natural or artificial place where water is collected and stored for use, especially water for supplying a community, irrigating land, or furnishing power (4)

retail refers to stores through which consumers buy goods (26)

revenue income from taxes and fees (3)

revenue bond a long-term loan that is repaid by the revenue received from fees for the use of the facilities or services provided by the local independent authority (7)

Ridge and Valley region a geographic region of the state just east of the Appalachian Plateau region (1)

robotics computer-controlled mechanical devices, such as automated tools (27)

royal colony a colony under the control of the king (9)

rural farm-centered (15)

S

scalawag negative nickname given to Southerners who supported the Republicans during Reconstruction (17)

search warrant an order from a judge allowing a search and describing what may be searched and removed (2)

secede to withdraw from the Union (13)

sectionalism extreme loyalty given to a particular region in the belief that their ideas and interests must be protected from other regions (15)

segregate to separate by race (17)

separate-but-equal doctrine the doctrine, established by the U.S. Supreme Court decision in *Plessy v. Ferguson*, that public places could be separate by race, but that they had to be “equal” (19)

separation of powers the division of powers among the three branches (legislative, executive, judicial) of government (2)

service industry that part of the economy that provides a service for others for some form of payment (20)

sharecropping an agricultural system common after the Civil War where landless farmers worked the land of a landowner who also supplied a house, farming tools and animals, seed, and fertilizer in return for a share of the crop harvested (17)

shopping center a group of retail and service stores, and often restaurants, that has common off-street parking (26)

siege a military action that occurs when forces try to capture a fortified fort or town by surrounding it and preventing any supplies from reaching it (12)

sit-in a type of demonstration where people enter a public building and refuse to leave until they are served or their demands are met (24)

slander a false spoken statement that harms a person’s reputation (2)

slave a person who was considered the legal property of another person (8)

slave code a series of laws governing what slaves and slave owners could and could not do (10)

slave state a state that allowed slavery (15)

slavery the practice of owning people as property (9)

smuggling secretly importing or exporting goods (11)

Southern Christian Leadership Conference (SCLC) an organization founded by Dr. Martin Luther King, Jr. and others to work for civil rights for African Americans through nonviolent means (24)

sovereignty the idea of supreme power or the source of authority (2)

special-purpose district a form of local government created for a particular purpose or a particular service area (7)

Stamp Act legislation passed by Parliament in 1765 that required stamps be placed on all printed materials and documents (11)

state court a court in the Georgia court system with limited jurisdiction within one county; hears misdemeanors, including most traffic violations (5)

states’ rights the belief that all powers not specifically given to the national government in the U.S. Constitution or specifically denied to the states remain with the states (15)

status offender a child who commits an act that would not be considered a crime if committed by an adult; unruly child (6)

statute a law enacted by the legislature (4)

statutory official a government official whose position is called for by statute (4)

stock an ownership share in a corporation (26)

stock market the place where shares of ownership in corporations (stock) are bought and sold (21)

strike a work stoppage in protest over some grievance (22)

strong mayor-council form a form of municipal government in which the elected mayor is the city’s chief executive officer and is responsible for seeing that the city’s laws are carried out and its city departments do their jobs (7)

Student Nonviolent Coordinating Committee (SNCC) an organization founded in 1960 to coordinate and publicize sit-ins and other protests (24)

subsidy a grant of money from the government (22)

subsistence describes farming where the farmer is able to produce just enough to survive (14)

suburbs residential areas around cities (26)

suffrage the right to vote (18)

Sugar Act legislation passed by Parliament in 1764 that imposed a tax on sugar and molasses imported from the West Indies (11)

superior court the trial court in the Georgia court system; hears both civil and criminal cases (5)

Supreme Court the highest-ranking court in the Georgia court system (5)

surplus a quantity much larger than is needed (21)

suspect one who is thought to have committed a crime (5)

swamp a low, sometimes spongy land formation, usually covered with water (1)

syllabary a group of symbols that stand for whole syllables of a language (14)

T

tariff a tax on imported goods (15)

tenant farming an agricultural system common after the Civil War where a farmer worked the land of a landowner in exchange for cash or an agreed-upon share of the harvest; tenant farmers usually owned some agricultural equipment and farm animals (17)

Thirteenth Amendment an amendment to the U.S. Constitution, ratified in 1865, that made slavery illegal (17)

tornado a rotating column of air that reaches down from storm clouds to the ground (1)

tort an injury or wrong done to a person that can be compensated with the payment of money (called *damages*) (5)

tourism travel for recreational or leisure purposes (4)

Trail of Tears name given to the forced removal of the Cherokee to Indian Territory (present-day Oklahoma) (14)

treaty a formal agreement between two or more nations (3)

truck farming to grow vegetables and fruits for local markets (20)

trustee a person who holds responsibility and acts on behalf of others (9)

tuition a fee for instruction (13)

tutor a person who makes money by teaching children for a fee (10)

U

Underground Railroad a series of roads, houses, river crossings, and people who helped southern slaves, mainly from the border states, escape to the North (15)

unicameral refers to a legislature that has one house (13)

unincorporated area an area of the county that is not included in any city boundary (7)

United States Constitution the document that set up our current framework for government; written in 1787 and ratified in 1788 (13)

unruly child a child who commits an act that would not be considered a crime if committed by an adult; status offender (6)

urban city-centered (16)

V

verdict the decision in a legal case (5)

vestry in colonial Georgia, a local governing board for a parish (10)

veto to reject or refuse to sign a bill (3)

visual arts works of art—such as painting, sculpture, and photography—that you can look at and that typically exist in permanent form (27)

Voting Rights Act of 1965 federal legislation that enforced equal voting rights among all races; made literacy tests and other methods used to undermine the 15th Amendment illegal (24)

W

weak mayor-council form a form of municipal government in which the elected city council has more power than the mayor (7)

weather the day-to-day conditions and changes in the atmosphere (1)

wetland a low-lying land area where water lies close to the surface; a lowland that is influenced by tidal water flows (1)

white primary the Democratic Party's rule of 1900 that its primaries for statewide offices would be open to whites only (19)

white supremacy white control of government and society based on the belief that the white race is superior to any other race (17)

World War I a war that began in Europe in 1914 between the Central Powers (Germany, Austria-Hungary) and the Allied Powers (France, Great Britain, Russia, and eventually the United States); the war ended in 1918 (20)

World War II a war that began in Europe in 1939 between the Allied Powers (France, Great Britain, the Soviet Union and eventually the United States) and the Axis Powers (Germany, Italy, and Japan); the war ended in 1945 (23)

Y

Yazoo land fraud the sale of western land to four land companies after the members of the General Assembly had been bribed (14)

Index

The purpose of the index is to help you locate information quickly. The index contains references not only to text, but also to illustrations and maps. A page number with **m** before it indicates a map; a page number with a **p** before it indicates a photograph or painting; a page number with an **f** before it indicates a table or chart.

A

Aaron, Hank, 667-668
Abernathy, Reverend Ralph, 616, 619
abolition movement, def. 355, 368-369, 373, 376, 377
Abraham Baldwin Agricultural College, 682
Academy of Richmond County, 306
accredit, def. 593
Adams, John, 265, 295
adjudicatory hearing, def. 132
Aflac, 666
African Americans, 40, 412, 656
 in 1920s, 529-530
 businesses, 482-483
 churches, 436-437, **p**436, 439, 482
 and civil rights, 473, 486, 607-625
 after the Civil War, 412, 417, 421
 during depression, 549
 and discrimination, 471, 549
 disfranchisement of, 488-490
 and education, 438, 439, 479, 483-486
 and Great Migration, 478, 529-530
 institutions, 482-486
 and integration, def. 607, 610
 leaders, 478-479
 during New Deal, 562, 607
 organizations, 481, 486, 530, 608, 616, 617, 618, 619
 in politics, 423-425, 426, 439, 622, 634, 640
 and schools, 608
 and segregation, 471, 473-480
 and voting, 422, 423, 424, 439, 471
 See also blacks, civil rights movement, segregation, slavery, slaves.

African Methodist Episcopal (AME) church, 424, 437
African Methodist Episcopal Zion (AMEZ) church, 437
agribusiness, def. 658
Agricultural Adjustment Administration, 555-556, **f**558, 564
Agricultural Extension Service, 463
agriculture,
 in 1920s, 534-536, 538-539, 540
 advances in, 364
 agribusiness, 658-659
 in antebellum period, 313-333, 357-358
 and class system, 332-333
 after the Civil War, 432
 during colonial period, 226, 227
 commissioner of, 97
 crops grown, 226, 227, 304-305, 555, 656
 during depression, 521, 548
 and droughts, 535, 540
 farmers' organizations, 455-459
 and New Deal, 555-556
 during New South era, 499-500
 during Reconstruction, 432-434
 after Revolutionary War, 331-333
 and sharecropping system, 433-434, 499, 500, 554, 656
 after World War II, 656-659
 See also farmers.
Agrirama, **p**432, **p**434, **p**435
airports, 653-654
Alabama, 3
Albany, 425, 619, 654
Albany Civil Rights Institute, 625
Albany Movement, 619, **p**619
Albany State University, 484
Alcovy River, 42
Allen, Ivan, Jr., 624, 654, 667
ally, def. 200
Altamaha River, 37, 38, **p**38, 191, 224, 228, 233

amend, def. 80

amendments, to U.S. Constitution, 60-62, 109, 420, **f420**, 425, **f426**, 465, 597. *See also* constitution, Georgia; Constitution, U.S.

American Revolution, 240

battles of, 259, 273-274, 283, 284

causes, 247-248

events leading up to, 248-249, 256-267

in Georgia, 240, 272-278, 280-291, **m282**

preparing for, 272-273

siege of Savannah, 284-285

See also French and Indian War.

Americus, 619

Amicalola Falls, 44, **p44-45**

Anderson, Major Robert, 388

Andersonville Prison, 410-411, **p411**

Andrews, Benny, 691-692, **p691**

Anglican Church, 307, 308. *See also* Church of England.

Ann, 193

Anna Ruby Falls, **p5**

annex, def. 370

antebellum, def. 355

Antietam, 397-398

Antifederalists, 315

anti-Semitism, def. 492, 492-493, 590

antislavery movement, *see* abolition movement.

Apalachee River, 36

Appalachian Mountains, 6, 217, 300

Appalachian Plateau region, 6-9, **p6-7**, **m7**, **p7**

Appalachian Trail, **m4**, 13

appeal, def. 13

appellate jurisdiction, 112, 113-114

Appling County, 700

Appomattox Court House, 412

apportionment, def. 74, 635

appropriate, def. 85

aquifer, def. 16, **m17**

arbitration, 118

archaeological sites, 169, **m170**

archaeology, def. 163

Archaic culture, 164-165

armistice, def. 514

Armuchee Ridges, 10

Arnall, Ellis Gibbs, 592, 594-597, 632, 633, 637, 638

arraign, def. 121

arsenal, 391

arson, def. 361

Articles of Confederation, def. 297, 301-302, 310, 311, 312, 316

weaknesses of, 297, 310, **f313**

artifacts, def. 162, 163

artisans, 209, 228, 338, 359, 363, 434

arts, 655, 686-697

assembly line, def. 528, **p528**

Athens, 150, 287, 379, 390, 654

Atkinson County, 700

Atlanta, 103, 147, 336, 379, 460, 506, 623, 645

in 1920s, 527-528

airport, 529, 654

as capital, 36, 440, 441

Centennial Olympic Games, 670

Centennial Olympic Park, 670, **p670**

and civil rights movement, 611-612, 615

during Civil War, 390, 391, 406-410, **p408**, 409, **m409**

colleges, 438, 485

government, 149

during Great Depression, 548, 549

Metropolitan Rapid Transit Authority (MARTA), 653

modern, 652, 655, 665, 686, 688

Race Riot, 489

schools, 615

and sports, 667-669

Atlanta Baptist College, 485

Atlanta Braves, 667-668, **p667**, 670

Atlanta Campaign, during Civil War, 406-408

Atlanta Compromise speech, 479

Atlanta Constitution, 501

Atlanta Daily World, 483, 634

Atlanta Falcons, 668

Atlanta-Fulton County Stadium, 667

Atlanta Hawks, 668

Atlanta Journal, 633

Atlanta Life Insurance Company, 483, 506

Atlanta Motor Speedway, **p668**, 669

Atlanta Negro Voting League, 634

Atlanta Thrashers, 668

Atlanta University, 438, 439, 480, 485, 486

Atlantic Ocean, 3, 14, 34, 39, 43

Atlantic Intracoastal Waterway, 39

attorney general, state, 96

Augusta, 15, 34, 147, 150, 165, 203, 204, 210, 227, 282, 284, 286, 287-288, 299, 305, 306, 307, 315, 316, 335,

336, 337, 339, 388, 390, 391, 434, 440, 441, 505, 536, 565, 582, 612, 624, 654, 669, 683
Augusta Baptist Institute, 438
Augusta Canal, 467, 502
Augusta National Golf Club, 537
automobiles, 528, 530, 586, 652
aviation, 653-654

B

baby boom, 683
backcountry, def. 181, 231, 232, 235, 251, 274, 286, 287, 288, 299, 331
Bacon County, 700
bail, def. 62, 116
Bainbridge, 653
Baker County, 700
Baker v. Carr, 460, 635
Baldwin, Abraham, 311, 314, 317, **p**317
Baldwin County, 330, 700
banks and banking, 539-540, 545, 554-555, 666
Banks County, 700
Baptist church, 235, 236, 308, 309, 325, 393, 436, 437, 438
Barnes, Roy E., 610, 684
barrier islands, 39-41, **m**39, def. 40
Barrow County, 700
Barger, Dr. John D., **p**99
barter, def. 549
Bartow County, 700
Bartram, William, 38, 254-255, **p**254
battles,
 of Antietam, 397-398
 of Bloody Marsh, 206-207
 of Chickamauga, 405-406
 of Civil War, 394, 396, 397, 399-400, 405-410
 of Gettysburg, 399-400
 of Horseshoe Bend, 343, 344, 345
 of Kettle Creek, 283, **m**283
 of the Rice Boats, 273-274
Bell, John, 378, **p**378, 379
Bell Aircraft, 580, 583, 585, **p**584-585, 664
Ben Hill County, 700
Berrien County, 700
Bethany, 235
Bethesda, 209-210, 229
Bethune, Mary McLeod, 562, **p**562
Bibb County, 700
Bibb Manufacturing Co., 502, **p**502

bicameral, def. 72
bill, def. 77, 81-85
Bill of Rights, 60-62, def. 316
Black Codes, 421, 422, 474
Black, Gary, **p**97
black market, def. 588
Blackbeard Island, 39, 40, 41
blackout, def. 588
blacks,
 and Black Codes, 421, 422, 474
 disfranchisement of, 488-490
 and education, 437-438, 475, 481, 483-487
 free, 338
 and Great Migration, def. 478, 488
 in politics, 423-425
 and religion, 436-437
 and suffrage, 423, 425, 428
 See also African Americans, civil rights movement, discrimination, freedmen, slaves, slavery.
Blakely, 166
Blank, Arthur, 666, 668, 694, **p**694
Bleckley County, 700
blockade, def. 390, **m**390, 392, 393, 511
blockade runners, 390
Bloody Marsh, Battle of, 206-207
Blue Bird, 664
Blue Ridge Mountains, 12, 30
Blue Ridge Mountains region, **p**2-3, 12-13, **p**12-13
blues, the, 530-531, 533, 687
board of commissioners, 144
Board of Education, 594
Board of Pardons and Paroles, 97, 98, 493, 594
Board of Regents, of the University System of Georgia, 100, 531, 593, 594, 639
boll weevil, **p**534, 534-535
Bolzius, John Martin, 201, 210, **p**210, 232, 235
bond, def. 392, 435, 588, 673, 674
Bond, Julian, 617, 618, 622, **p**622
Booth, John Wilkes, 420
border states, def. 378
bordering states, 3, 5
Boston Tea Party, 257
Boudinot, Elias, 346, 347, 349
Bourbon Triumvirate, 451-453, def. 451
boycott, def. 252, 257, 258, 455, 615
Bragg, Braxton, 405-406
Brantley County, 700

Brasstown Bald, 5, 13, **p13**
 Braves, Atlanta, 667-668
 Bray, Associates of Dr. Thomas, 187
 Breckinridge, John C., 378, **p378**, 379
 Breman, William, Jewish Heritage and Holocaust Museum, 588, **p589**, 590
 Brewer, Thomas, 615
 Brier Creek, 34
 Brier Creek, Battle of, 284
 Broad River, 224
 broilers, 658-659, def. 658
 Brooks County, 700
 Brown, James, 687
 Brown, John, **p376**, 377, 378
 Brown, Joseph E., 380, 388, 393, 394, 411, 435, 451, **p452**, 453
 Brown, Thomas, 274, 282, 286, 287, 288
 Brown, Walter J., 694
Brown v. Board of Education, 608-609
 Brunswick, 16, 654
 port of, 101, 653
 during World War II, 584-585
 Bryan, Andrew, 308-309
 Bryan, Jonathan, 217
 Bryan County, 700
 Buchanan, James, 377, 387
 budget,
 local government, 148, 149
 personal, 673, 675
 state, def. 85, 86-87, **f87**, 93, 100
 Bull, William, 194
 Bulloch, Archibald, 258, 262, 274, **p274**
 Bulloch County, 700
 Bullock, Rufus, 425, 427
 Burke County, 140, 277, 282, 306
 Busbee, George, 683, **p683**
 business, 337, 502-504
 Butt, Archibald, 466-467, **p466**, **p467**
 Butts County, 700

C

Cagle, Casey, **p95**
 Caldwell, Erskine, 689
 Calhoun, 403
 Calhoun, John C., 367, **p367**, 368
 Calhoun County, 700
 California, 373-374

Callaway, Howard "Bo," 638, 639, **p639**
 Callaway Gardens, 639
 Camak, 336
 Camden County, 140, 277, 700
 Camilla, 425
 Camp Benning, 513
 Camp David Accords, 643
 Camp Gordon, 513, **p514**, 515, 582, 591
 Camp Hancock, 515
 Camp Lawton, 411
 Camp McKenzie, 529
 Camp Stewart, 582, 591
 Camp Wheeler, **p514**, 591
 Campbell, Tunis G., Jr., 424, 429, **p429**
 canal, def. 335
 Candler, Asa G., 503, 504, 536
 Candler County, 700
 Candler Field, 529
 Canoochee River, 36
 capital, state,
 Atlanta, 36, 440, 441
 Augusta, 440
 Louisville, 299, 441
 Milledgeville, 409, 442
 Savannah, 440, 441
 capital felony, def. 111
 Capitol, State, **p52-53**, **p54**, **p70-71**
 Carmichael, James, 632
 Carolina, 181, **m182**, 189
 carpetbaggers, def. 423, 424
 carpet industry, 662-663
 Carroll County, 700
 Carson, 'Fiddlin' John, 687
 Carter, James Earl "Jimmy," 51, 640-644, **p641**, 693
 as governor, 641-642
 in state Senate, 641
 after the presidency, 643-644
 as president, 623, 642-643
 Carter Center, 643, 644
 Cartersville, 169
 Cartersville-Great Valley fault system, 10
 cash crops, def. 227, 305, 331
 Castell, Robert, 187
 casualty, def. 400
 Catholic church, 325, 491, 492
 Cathy, Truett, 694
 Catoosa County, 700

caucus, def. 77
 cause and effect, 322
 caves, 8
 cede, def. 224
 census, def. 74, 93, 637
 centennial, def. 670
 Centennial Olympic Games, 670
 Centennial Olympic Park, 670, **p670**
 Central of Georgia Railroad, 336
 certificate of deposit, def. 673
 Chamblee, 654
 Chancellorsville, 399
 charities and foundations, 693-695
 Charles, Ray, 687
 Charlton County, 700
 charter, def. 147
 of 1732, 191
 Chatham County, 140, 277, 700
 Chatsworth, 350
 Chattahoochee County, 150, 700
 Chattahoochee River, 14, 15, **p26-27**, 29-30, **p29**, 328, 344
 Chattooga County, 700
 Chattooga River, 32-33
 Cheatham, Owen R. 541, **p541**
 checking account, 672
 checks and balances, in government, 56-57, **f57**
 Cherokee County, 700
Cherokee Phoenix, 346
 Cherokee Indians, 8, 171, 181-182, 204, 219, 224, 275, 297, 300, 327, 341, 350
 and gold, 13, 347
 government, 346-347
 removal, 340, 345-349
 syllabary, 346
 Trail of Tears, 349
 Worcester v. Georgia, 347
 Chickamauga, battle of, 405-406
 Chickamauga and Chattanooga National Military Park, 10, **p11**, **p269**, 565
 Chickamauga Valley, 10
 Chickasaw Indians, 181, 204
 chief justice, 114
 Choctaw Indians, 179, 219
 Christian Methodist Episcopal Church, 437
 Church of England, 201, 210, 221, 234, 278
 circuit riders, 308

cities,
 courts, 117
 functions of, 148
 funding for, 152-153
 government, 148-149
 See also specific cities.
 citizen, 60-65, 67. *See also* civil rights.
 citizenship, 62
 Civilian Conservation Corps (CCC), 556-557, **f558**, 559
 civil law, 109, 110, 111, 112, 123
 civil rights, 60, 630
 Civil Rights Act of 1866, 422
 Civil Rights Act of 1964, 621, 622
 civil rights movement, 60, 604-625
 and Atlanta, 611-612, 615
 Albany movement, 619
 in the courts, 608, 609, 631
 Montgomery bus boycott, 615
 music, 624
 and nonviolent resistance, 615
 organizations, 480, 486, 530, 608, 616, 617, 618, 619
 resistance to, 621-622
 school integration, 608-609, 611-613
 Voting Rights Act, 622
 civil service, def. 594
 Civil War, 321, 396
 advantages of each side, 389
 Atlanta Campaign, 406-408
 battles of, 394, **p394**, 396, 397, 399-400, 405-410
 beginning of, 388-389
 blacks in, 391
 blockade, **m390**, 392, 404
 and drafting, 404
 and the economy, 392
 end of, 411-412
 Great Locomotive Chase, 402-403
 March to the Sea, 409-410, **m409**, **p410**
 preparing for, 387-388
 prisons, 410-411
 resources of each side, **f390**
 Sherman's Atlanta Campaign, 406-408
 Sherman's March to the Sea, 409-410, **m409**
 strategy, 406, 407
 Union blockade of coast, **m390**
 women in, 391
 See also Reconstruction.
 Civil Works Administration (CWA), **f558**

Clark Atlanta University, 439, 485
 Clark College, 438, 485
 Clarke, Elijah, 283, 288, 298-299
 Clarke County, 150, 700
 Clarks Hill Lake, 35
 classical music, 688
 clay, 14
 Clay, Henry, 366, **p**366
 Clay, Joseph, 261, 339
 Clay County, 700
 Clayton, Augustin, 337
 Clayton County, 653, 701
 clerk of the superior court, 144
 climate, 6, def. 20, 20-25
 Clinch County, 701
 Cloudland Canyon, **p**8-9
 CNN, 655, 667, 670
 coal, 8
 Coastal Plain region, 16-18, 339
 Cobb, Howell, 375, 380, 387, 411
 Cobb, Thomas R. R., 380, 388, **p**398
 Cobb County, 701
 Coca-Cola Company, 503-504, **p**504, 536-537, 547, 587, **p**587, 655
 Cofer, Judith Ortiz, 691
 Coffee County, 701
 Cold War, 631, def. 663, 664
 collaboration, 118
 colleges and universities, 393, 438, 485-486. *See also* specific colleges.
 Colored Methodist Episcopal (CME) Church, 437
 colony, def. 178
 crops grown by, 190, 195, 226-227
 British, 179-181, 188-189
 of Georgia, 192, 195-196, 198-207, 208-211, 216-224, 226-229
 reasons for establishing, 190
 royal, def. 189
 Spanish, 177
 Colquitt, Alfred H., 427, 451, 453, **p**453
 Colquitt County, 701
 Columbia County, 224, 317, 701
 Columbian Exchange, 175
 Columbus, **p**14, 15, 147, 150, 335, 337, 379, 390, 411, 502, 536, 537, 615, 653, 654, 683
 Columbus, Christopher, 161, 173, 176
 commission, regional, 145, **m**145

committees, legislative, 77-78, 82, **f**83, 84
 committees of safety, 261
 Commons House of Assembly, 217, 220, 221, 233, 250, 258, 259
 Community Health, Department of, 100
 commute, def. 493
 comparing and contrasting, 50
 compromise, 118
 Compromise of 1850, def. 374, **f**374, **m**374, 376 and Georgia Platform, 375
 Compromise, Great, 312
 Compromise, Missouri, def. 366, **m**366, 371, 376
 concurrent powers, 56
 Confederate States of America, 321, def. 387, **m**388
 constitution, 387, 388
 and economy, 392
 establishment of, 386, 387
 war debt of, 422, 433
 See also Civil War.
 confederation, def. 240, 296
 Confederation, Articles of, 297, 310, 311, 312, **f**313
 Confederation Congress, 311, 315
 Congregational church, 235, 308
 Congress, U.S., 312, 313, 325, 366
 conserve, def. 102
 conservative, def. 277
 consolidated, def. 683
 consolidated government, def. 150
 constituent, def. 73
 constitution, def. 53, 55
 constitution, Georgia, 48, 53, 60-62, 92, 97
 of 1777, 140, 277-278, 297, 308
 of 1789, 58
 of 1798, 330
 of 1861, 388
 of 1865, 421
 of 1868, 423
 of 1877, 428, 459
 of 1945, 94, 595
 of 1983, 58, 141
 amendments to, 58
 Constitution, U.S., 53, 54-57, 56, 58, 60, 80, 96, 139, 282, def. 313, **f**313, 387
 amendments to, 60-62
 Bill of Rights, 55, 60-62
 powers, 56
 ratification of, 240, 315-316

- writing of, 312-315
- Constitutional Convention of 1787, **p**310-311, 312-315
- compromises at, 312
- delegates, 311
- Great Compromise, 312
- New Jersey Plan, 312
- Virginia Plan, 312
- constitutional convention, state,
- of 1865, 421
- of 1867, 423
- constitutional officer, def. 96, 143
- Constitutional Union Party, 375
- containment, def. 663
- Continental Congress, First, 258
- Continental Congress, Second, 258, 259, 263, 265, 266, 267, 273, 297
- Continental troops, 273, 276, 280, 281
- convict lease system, 429, 435, 455, 463, **p**463
- Cook County, 701
- cooperative, 560-561, def. 561
- co-ops, def. 455
- Coosa Indians, 168, 177
- Coosa River, 29, 169
- corn, 333, 432, 534
- cotton, 338, 436, 439, 536, 656-657
- and boll weevil, 500, def. 534, 534-535, **p**534
- gin, def. 331, **p**331
- growing, 305, 327, 331, 332, 333, 364, 390, 392, 432, 434, 499, 534, 535
- prices, 454, 499, 534
- and sharecropping, 499, 500, 534
- and slavery, 358-359
- See also* sharecropping, tenant farmers.
- Cotton States and International Exposition, 479, 502
- council-manager form, of city government, 149, **f**149
- Council of Safety, def. 261, 267, 272, 274, 275, 276
- counties, def. 140, **m**141, 146, 330
- county seats, def. 140, **m**141
- county unit system, 459-460
- elected officials in, 143-144
- funding for, 152-153
- government, 140-145
- list of, 700-701
- origins of, 140-141
- services provided by, 142-143
- country music, 687
- county commissioner, 144
- county seat, def. 140, **m**141, 700-701
- county unit system, 428, 459-460, def. 459, **f**459, 592-593, 631, 635-637
- Court of Appeals, 113, def. 114
- courts,
- federal, 117
- juvenile, 128, 130-133
- municipal, 117
- state, 109, 110, 112-117, **f**114, 297
- Coverdell, Paul, 644
- covered bridges, 36, **p**36
- Coweta County, 701
- crackers, def. 231
- Craft, William and Ellen, 363
- Crawford, George Walter, 380
- Crawford County, 701
- credit, def. 304, 454, 456
- cards, 675
- history, 675
- personal, 674-675
- Creek Indians, 171, 181, 182, 194, 204, 205, 219, 224, 225, 275, 297, 311, 315, 341
- Creek War, 342-343
- and land, 300-302, 303, 327-328, **m**328, 342, 343, 344
- and removal, 340, 344
- and settlers, 315
- crime, def. 110, 111, 132, 133, 135
- criminal justice process, 120-123
- appeal, 122
- for juveniles, 127
- pretrial proceedings, 120-121, **f**121
- trial, 121-122, **f**122
- criminal law, 109, 110-111, 112, 123
- Crisp, Charles, 456
- Crisp County, 701
- crop lien, def. 433, 454, 457
- crops, cash, def. 227, 305, 331, 390, 566, 656, 657.
- See also* agriculture.
- culture, def. 163
- Cumberland Island, 40, **p**40, 41, 342
- Cumberland Plateau, 6
- Cumming v. Richmond County Board of Education*, 475, 481
- curriculum, 99, def. 683
- Cusseta, 150
- Cyclorama, 403

D

Dabney, Austin, 283-284
 Dade County, 7, 701
 Dahlonge, 44, 337, 347, 388, 438
 Dalton, 390
 Darien, 38, 202, 235, 258, 429
 Davis, Jefferson, 387, 388, 399, 405, 407
 Dawson County, 701
 Dawsonville, 44
 De Soto, Hernando, 176-177, **p176-177**
 Deal, Nathan, **p90-91**, **p92**, 685
 Deal, Sandra, **p90-91**, **p94**
 DeBrahm, William G., 219, 221
 Decatur County, 701
 Declaration of Independence, 264-265, def. 265, 266, 274
 Deere, John, 364
 defendant, def. 111, 113, 116, 121
 defense industry, 583-586, 663-664
 deficit, def. 93
 DeKalb County, 653, 701
 delinquent act, def. 129, 132
 delinquent behaviors, 132-133
 Delta Airlines, 654, 655
 democracy, 59
 Democratic Party, 77, 451-453, 454, 456, 458, 459, 488-489, 560. *See also* political parties, politics, specific individuals.
 denomination, def. 235
 Department of Natural Resources, 692
 Department of Veterans Services, 595
 depression, def. 337, 436, 457, 499, 534. *See also* Great Depression.
 deprived child, def. 128
 desegregation, 607, 610, 611, 624, 682
 development and climate, 25
 Dickey, James, 690
 dictator, def. 574, 664
 discrimination, def. 428, 480, 491, 566. *See also* African Americans, segregation.
 disfranchisement, 488-490, def. 488
 dispositional hearing, def. 132
 disputes, settling peacefully, 118
 district courts, federal, 117
 distinguishing fact from opinion, 522
 diversify, def. 500
 Division of Family and Child Services, 128
 Dodd, Lamar, 692

Dodge County, 701
 Dooly, John, 283, 287
 Dooly County, 701
 Dougherty County, 701
 Douglas, Stephen A., 378, **p378**, 379
 Douglas County, 701
 draft, def. 389, 404, 513, 576
Dred Scott decision, 373, 377-378, **p378**
 drivers, def. 359
 drought, def. 21, 535, 540
 Dublin, 36
 DuBois, W. E. B., 479-480, **p480**, 489
 due process, 61-62, 120, 477
 Dupri, Jermaine, 688
 Dust Bowl, 540, **p540**

E

Early County, 701
 Eatonton, 166
 Ebenezer, 201
 Ebenezer Baptist Church, 483, 616
 Ebenezer Creek, 34
 Echols County, 150, 636, 701
 ecology, 19
 ecosystem, 19
 Economic Development, Georgia Department of, 101-102
 economy, 642
 of 1920s, 525, 534-537, 538-540
 after the American Revolution, 304-305, 327
 barter, 549
 during Civil War, 392, 393, 412
 colonial, 209, 226-229
 free enterprise system, 647
 and Great Depression, 554
 growth, 634
 inflation, 392
 mercantilism, 190
 modern, 647, 650-655, 656-659, 660-664
 in New South era, 497, 498-509
 and personal finances, 672-675
 during Reconstruction, 430-436
 seaports, 101, 653
 and taxes, 513-514
 during World War I, 511
 during World War II, 573, 583, 585, 588
 See also agriculture, industry, manufacturing.

education, 51, 392, 680-681
 agricultural, 681
 after the American Revolution, 304, 305-307
 for blacks, 431, 437, 438, 485-486
 Board of, 99
 during colonial period, 209-210, 236
 curriculum, 99, def. 683
 funding for, 463, 681
 Georgia Performance Standards, 684
 Governor's Honors Program, 683
 higher, 531, 683
 HOPE scholarship program, 684, 685
 and integration, 608-609, 611-612
 junior colleges, 683
 kindergarten program, 683
 Perry Act, 681
 Quality Based Education (QBE), 683
 reform, 563, 635, 683, 684
 during Reconstruction, 437-438
 and segregation, 438, 608, 610
 State Department of, 99-100
 state superintendent of, 96-97
 teachers, 681, 683
 and testing, 683
 vocational, 463, 479, 681, 683
 Effingham County, 140, 277, 339, 701
 Eisenhower, Dwight D., 607, 651
 Elbert, Samuel, 273, 276, 282, 284
 Elbert County, 287, 701
 elections, 72, 142
 of 1860, 373, 378
 of 1932, 550-551
 of 1936, 561-563
 and county unit system, 428, 459-460, 592-593,
 631, 635-637
 general, 63, 64, 93
 nonpartisan, def. 63, 115, 116
 primary, 63
 run-off, 63, 64, 635
 special, 63-64, 95
 white primary, 488-489
 Electoral College, def. 313, 314, 325
 elevation, def. 12
 Ellis, Henry, 220-221, 225
 Ellison's Cave, 8
 Emancipation Proclamation, 387, 398-399, def. 398
 Emanuel County, 701

Emory University, 325, 438
 energy crisis, 642
 England *see* Great Britain.
 entrepreneur, def. 102, 350, 351, 541
 enumerated powers, 56
 Environmental Protection Division, 103
 Episcopal church, 308, 436, 437. *See also* Church of
 England.
 Epps, Ben T., 528
 erosion, def. 7
 estuary, def. 35, 38
 Etowah Mounds, 28, 169, 177
 Etowah River, 28-29, **p**29
 European exploration and settlement, 172-183
 by English, 179-181, 188-189
 by French, 178, 179
 by Spanish, 178-179
 Evans County, 701
 excise tax, 87
 executive branch of government, Georgia, 90-105
 appointed officials, 97-100, **f**98
 checks and balances, 56-57, **f**57
 departments and agencies, 97-103, **f**98
 elected officials, 96-97
 governor, 80, **f**83, 84-85, 87, **p**90-91, 92-94
 lieutenant governor, 76, 77, 84, 91, 94-95, 96, 595
See also governor, city government, county
 government, state government.
 Exodusters, 477
 expenditures, state, 86-87, **f**87
 expedition, def. 176
 expenses, def. 672
 exploration and settlement, 172-183
 expressed powers, 56

F

faction, def. 277
 factor, def. 338
 Fair Labor Standards Act, **f**558, 564
 Falcons, Atlanta, 668
 Fall Line, **p**15, def. 14, 15, 16, 334, 335
 Fannin County, 701
 farmers,
 after the Civil War, 432-434, **p**432
 during Great Depression, 548
 organizations, **p**454, 455-456
 sharecroppers, 433-434

slave-owning, 332-333
subsistence, 333
See also agriculture.
Farmers' Alliance, 449, 455-456, def. 455
farming, 14, 333, 656. *See also* agriculture, sharecropping.
fascism, def. 574
fault, def. 8
Fayette County, 701
Fechner, Robert, 556, **p**556
Federal Deposit Insurance Corporation (FDIC), 549,
p554, 555, **f**558, 673
Federal Emergency Relief Administration (FERA), **f**558
federal government, *see* government, federal.
Federal Housing Administration (FHA), **f**558
federalism, def. 55, 314
Federalist Papers, The, 315, 316
Federalists, 315
felony, def. 63, 111, 114, 131
Felton, Rebecca Latimer, 462, 464, 465, **p**465
Felton, William H., 427, 452, **p**452, 464
Few, William, 282, 311, 314, 317, **p**317
Fifteenth Amendment, to U.S. Constitution, 425, **f**426,
439, 622
film, 691
finding the main idea, 242
fiscal year, def. 85
Flint River, 30, **p**30-31, 344
Florida, 3, 190, 274, 275-276, 280-281
Florida Rangers, 274, 276, 280, 282
Floridan aquifer, 16, **m**17
Floyd County, 169, 701
forests, 18, 103
Forsyth County, 701
Fort Argyle, 196
Fort Bartow, 395
Fort Benning, 581, 591, 622, 639
Fort Frederica, 198, 203, **p**203, 205, 206, 565
Fort Jackson, 395
Fort King George Historic Site, **p**186-187
Fort McAllister, 395, 413
Fort McPherson, 513, 556, 559, 581
Fort Mims, 342
Fort Pulaski, 388, 394, **p**395
Fort Screven, 515
Fort Sumter, 388-389, **p**389
Fortson, Ben, 633
Fourteenth Amendment, to U.S. Constitution, 422,

424, 439, 478, 481, 609
France, 178, 179, 190, 280, 284-285
and French and Indian War, 217-219, 222-223,
m222, 248
settlement by, 179
Frank, Leo, 492-493, **p**493
Franklin, Benjamin, 265, 295, 311, 312
Franklin County, 701
fraud, def. 457, 632, 633
free blacks, 338
free enterprise, def. 649
free-soil, def. 373, 376-377, 378
free state, def. 366
free trade, def. 649
freedmen, def. 420, 421, 422, 431, 432, 433
Freedmen's Bureau, 428, 431, 433
freedom rides, 618
Freedom Singers, 625, **p**625
French and Indian War, 217-219, def. 217, 240, 246,
247-248, 249
Fugitive Slave laws, 375
Fujita Scale for Tornadoes, **f**23
Fuller, Millard, 644, 695
Fulton, Robert, 334, **p**334
Fulton County, 51, 128, 636, 653, 701

G

Gainesville, 23, 565, 652
Galphin, George, 231, 275
Gammon School of Theology, 485
Garrison, William Lloyd, 368, **p**368
Garvey, Marcus, 530
General, The, 402-403
General Assembly, 71, 73, 74, 93, 96, 99, 102, 128, 139,
147, 632, 637, 640
committee system of, 77-78, 82, 84
leadership of, 76-77, 78
making laws, 80-85
membership of, 72-75
organization of, 76-78
page program, 79
sessions, 74-75, 93, 595
See also government, state; legislative branch;
legislature, state.
general election, 63, 64, 93
genocide, def. 575, 589
geographic regions, of the state, 3, 6-18, **m**17

George, Walter F., 465, 564, p564, 581, 610, 631
 George II, King, 190, 217, 256
 George III, King, 256, 264, 274
 Georgetown, 150
 Georgia,
 and agriculture, 327
 antebellum, 355, 356-363, 364, 368, 375, 380
 business in, 337, 502-504
 capitals, 440-441
 and civil rights movement, 604-625
 during Civil War, 386-403, 404-413
 during Cold War, 663, 664, 671
 colonial period, 192, 195-196, 198-207, 208-211,
 216-224, 226-229
 during the depression, 547-549
 economy of, 304-305, 337-338
 finances, 302
 heritage and history, 692-693
 and land, 327-331
 politics, 631-638, 640-645
 reasons for settling, 190
 and Reconstruction, 418-419, 430-439
 Redemption period, 427, 428, 435
 after Revolutionary War, 297-302
 settlement of, 188-196
 slavery in, 231-233, 298, 304-305
 trustee period, 190-210
 during World War I, 513-514
 during World War II, 580-588
 See also economy; government, state.
 Georgia Bureau of Investigation, 101, 104-105
 Georgia Charter of 1732, 191
 Georgia constitutions, *see* constitutions, state.
 Georgia Dome, p648-647, 668
Georgia Gazette, 228, 233, 236, 251, 259
 Georgia Historical Commission, 692
 Georgia Institute of Technology, 508, 639, 682
 Georgia Music Hall of Fame, 533
 Georgia-Pacific, 541, 655, 661
 Georgia Platform, def. 375
 Georgia Ports Authority, 101, 653
 Georgia Railroad, 336, 652
 Georgia Sea Turtle Center, 41
 Georgia Southern University, 593, 682
 Georgia Southwestern State University, 681-682
 Georgia State Capitol, p70-71
 Georgia State College for Women, 582

Georgia State University, 623, 682
 Georgia Writers Hall of Fame, 51, 689, 690, 691
 Germany, 574, 579
 Gettysburg, 399-400, p400
 Gettysburg Address, 401, f401
 G. I. Bill, 683
 Gilbert, Ralph Mark, 618
 Gilmer County, 701
 Girl Scouts of America, 517
 Glascock County, 701
 globalization, def. 647
 Glynn, marshes of, 16
 Glynn County, 16, 140, 277, 701
 gold, 13, 337, 373, p373, 441
 Golden Isles, 27, 39-41, 505
Gone with the Wind, 689
 Gordon, John B., 451, p451, 453, 456
 Gordon County, 701
 Goshen, 235
 government, def. 48, 53, 54-59, 110
 government, city, 147-150
 government, colonial, 209, 216-224
 government, county, 140-146
 government, federal, 54, 312, 643
 Articles of Confederation, 297, 310-311
 branches of, 56, 312, 313, 314
 checks and balances, 56-57
 House of Representatives, 312
 principles of, 54-57
 proportional representation, 312
 Senate, 312
 See also Constitution, U.S.
 government, local, 48, 140-145, 147-151, 152-153, 674
 government, municipal, 147-150
 government, special-purpose, 150-151
 government, state, 73, f98
 branches of, state, 48, 54, 56
 constitution, 297
 early, 274, 297
 executive branch of, 90-105
 funding state, 86-87, f87
 judicial branch of, 108-123
 legislative branch of, 70-87, 315, 632
 organization of, 76-78, 642
 governor, royal, 217-224
 governor, state, 77, 91, def. 92, 92-95, 96, 102, 278
 election of, 92

list of, 704-707
 powers of, 84-85, **p**85, 87, 92-94, 297
 qualifications, 92
 term, 92
 Three Governors Controversy, 632-633
See also specific governors.

Governor's Council, 229, 233, 250, 263, 273, 278
 Governor's Honors Program, 683
 Governor's Mansion, **p**93
 graduated income tax, def. 455, 456
 Grady, Henry W., 51, 499, 501, 508-509, **p**508, **p**509
 Grady County, 701
 grandfather clause, def. 489, 490, 608
 grand jury, def. 121
 Grange, 449, **p**454, 455
 granite, 14, 536, 660
 Grant, Ulysses S., 396, **p**396, 399, 406, 412
 grassroots campaign, def. 642
Gray v. Sanders, 635-637
 Great Britain, 179, 392
 and American Revolution, 240, 247-249, 256-267, 272-278, 280-291
 colonies of, 179-181, 188-189
 exploration by, 179
 and French and Indian War, 217-219, 222-223, **m**222, 246, 247-248
 and War of 1812, 340-343
 and World War II, 575, 576, 577, 588
 Great Compromise, def. 312
 Great Depression, 13, 538-540, def. 538
 Great Locomotive Chase, 402-403, **p**402, **p**403
 Great Migration, def. 478, 488
 Great Valley, 10
 Green-Meldrim House, 410, 413, **p**413
 Greene, Nathanael, 41, 288, 290, 331, 339
 Greene, Prince W., 502
 Greene County, 438
 Griffin, Marvin, 611, 634, 636-637
 Groover, Denmark, 610
 Guale, 178, 183
 guardian ad litem, def. 128
 Gulf of Mexico, 14, 43
 Gwinnett, Button, 265, 266-267, **p**266, 275, 277
 Gwinnett County, 653, 701

H

Habersham, James, 217, 229, **p**229, 263

Habersham, Joseph, 261, 262, 263, 273, 339
 Habersham County, 701
 Haines Institute, 484, **p**484, 562
 Hall, Lyman, 259, 262, 265, 266-267, **p**267
 Hall County, 23, 701
 Hamilton, Alexander, **p**315, 316
 Hancock County, 701
 Haralson County, 701
 Hardwick, Thomas, 488, **p**488, 489, 528
 Hardy, Oliver, 530, **p**530
 Harlem, 336
 Harpers Ferry, 378
 Harris, Francis, 229
 Harris, Joe Frank, 683, **p**684
 Harris, Joel Chandler, 287
 Harris, Julian, 532
 Harris County, 701
 Hart, Nancy, **p**286, 287
 Hart County, 701
 Hartsfield, William, 529, 611, 615, 618, 634, 654, 655
 Hartsfield-Jackson Atlanta International Airport, 30, 623, 654
 Hartwell Lake, 35
 Hatcher, Claude, 504
 Hawkins, Benjamin, 343, 344
 Hawks, Atlanta, 668
 headright system, def. 227, 227-228, 230, 279, 299
 Heard County, 702
 hemisphere, 3
 Henry County, 669, 702
 Herndon, Alonzo, 506, **p**506
 Herty, Charles Holmes, 501
 Highland Scots, 202, 210
 highways, 51, 651-652, **m**652
 Hill, Benjamin, 380
 historic sites, 103, 565
 Hitler, Adolf, 574, 589
 Hog Hammond, 40
 Holmes, Hamilton, 612, **p**613
 Holocaust, 576, 588-589, def. 589, **p**589
 Holsey, Lucius Henry, 478
 Home Depot, 655, 666
 home rule, def. 144, 449
 Hoover, Herbert, 538, **p**538, 548, **p**548, 550
 Hope, John, 485-486
 Hope, Lugenia, 485-486
 HOPE (education organization), 611

HOPE scholarship program, 684, 685
Horseshoe Bend, Battle of, 343, 344, 345
horticulture, def. 165, 168
House of Assembly, 278, 297
House of Representatives, Georgia, 72
 committees, 77-78
 districts, 74
 leaders of, 76, 77, 78, 645
 making laws, 80-85
 member requirements, 72
 organization of, 76-77
 sessions, 74-75
 See also General Assembly; senate, Georgia.
House of Representatives, U.S., 74, 637, 644. *See also*
 government, federal; Senate, U.S.
Houston County, 702
Houstoun, John, 258, 262, 280, **p**280, 339
Houston, William, 311
Howard, Oliver O., 431, 516
Human Services, Department, 100
Hunter, Charlayne, 612, **p**613, 614
Hunter Air Field, 582
hurricanes, 23-24, **p**23, **f**24
Hutchinson Island, 273
hydroelectric power, 27, 30, 337

I
immigrants, def. 231, 659, 663
immunity, def. 175
implied powers, 56
impressment, def. 340
income, def. 672
income tax, 86, **f**87, 391
incorporated, def. 147
indentured servants, def. 200, 231
independent authorities, def. 151
Independents, 452-453
Indian Removal Act, 347
Indians, *see* Native Americans, specific tribes.
Indian Territory, 347
indictment, def. 121, 133
indigo, 226, 305, 332
industrialization, 497, 501-505
industry, 337, 341, 451, 513-514
 in 1920s, 536-537, 538-539, 540
 growth of, 445
 lumber, 661

 mining, 660-661
 in the North, 365
 during Reconstruction, 434-436
 during World War II, 580
 See also textiles.
inferring, 446
inflation, def. 392
informal adjustment, def. 129
infrastructure, def. 152
inland ports, 653
installment plan, def. 528
insurance, 666. *See also* specific companies.
insurance, commissioner of, 97
integration, def. 607, 610
interest, def. 673
interest groups, def. 66, 82
International Cotton Exposition, 479, **p**503
interstate highways, 651-652, def. 651, **m**652
Intolerable Acts, 257-258, def. 257, 259
investment, def. 673, 673-674
Irwin County, 702
isolationism, def. 511, 573, 575
islands, barrier, 39-41
Italy, 574, 579

J
Jackson, Andrew, 343, **p**343, 347, 367, 368
Jackson, James, 290, 328, **p**329, 330
Jackson, Maynard, 623-624, **p**624, 654
Jackson County, 329, 702
Jamestown, 180
Japan, 574, 578, 590
Jasper, William, 285
Jasper County, 702
Jay, John, 295, 316, **p** 316
jazz, 531
Janes, Anna, 484
Jeff Davis County, 702
Jefferson, Thomas, 265, 340, 344
Jefferson County, 702
Jekyll Island, 40, 41, 505, 633
Jekyll Island Club, 41, **p**444-445, 505, **p**505
Jenkins, Charles, 375, 421, 423, 427, 428
Jenkins County, 702
Jesup, 652
Jewell, Jesse, 658-659
Jewish religion, 308, 325, 491, 492-493, 577, 589, 590

Jim Crow laws, def. 474, 614. *See also* segregation.

Johnson, Andrew, 420, **p420**

Johnson, Herschel Vespasian, 378, **p378**, 379, 380, 421

Johnson, James, 420

Johnson, James Weldon, 625

Johnson, Leroy, 622

Johnson, Lyndon, 607, 621, 622

Johnson County, 702

Johnston, Elizabeth, 291

Johnston, James, 236, 307

Johnston, Joseph E., 405, 407, 412

Jones, Bobby, 537, **p537**

Jones, Noble, 215, 217, 253, 263

Jones, Noble Wimberly, 253, 258, 260, 262, 263, 339

Jones County, 702

Juanillo's revolt, 183

judge of the probate court, 144

judicial branch of government, Georgia, 108-123, 463

- courts, 112-117, 128
- and judges, 113, 114, 115, 116, 117
- and jury system, 112

judicial branch of government, U.S., 117

judicial review, def. 118

jurisdiction, def. 112, 130

- appellate, 112, 113-114, 122
- concurrent, 116, 130
- original, 112, 114
- limited, 112, 115-117

jury, 64, def. 112, 121, 122, 123

justice, ensuring, 110-111

juvenile delinquent, def. 129

Juvenile Justice, Department of, 127, 134

juveniles, def. 127, 128-129

- court system, 115, def. 116, 130-133
- delinquent behaviors, seven, 133-134
- juvenile justice, steps in, 131-133, **f131**
- responsibilities of, 133-134, **f134**
- rights of, 130-131

K

Kansas-Nebraska Act, 375-377, def. 376, **p376**

kaolin, 661, **p661**

Kemp, Brian, **p96**

Kennedy, John F., 620, 621

Kennesaw, 402

Kennesaw Mountain, 407

Kennesaw Mountain National Battlefield Park, 557, 565

Kettle Creek, Battle of, 283

KIA, 664

King, Lonnie, 617

King, Dr. Martin Luther, Jr., 51, 616, **p616**, 618, 619, 620, 621, 624

King, Primus, 615

King Center, 693

King site, 168

King v. Chapman, 608

Kiokee Creek, 34, 235

Koinonia Farm, 619

Kolomoki Indian Mounds, 166, **p167**

Korean War, 664

Ku Klux Klan, 424-425, def. 424, 439, 451, 478, 492, 493, 532, **p532**, 611

L

labor,

- commissioner of, 97
- minimum wages, 564
- strikes, def. 559
- unions, 457, 536, 557, 559

lakes, *see* specific lakes.

Lake Altoona, 28

Lake Blackshear, 30, **p31**

Lake Burton, **p12**

Lake Chehaw, 30

Lake Jackson, 37

Lake Oconee, 36-37

Lake Russell, 35

Lake Sinclair, 36

Lake Seminole, 30

Lake Thurmond, 35

Lamar County, 702

Lamar Mound, 169

land,

- bounty grants, 298-299, 330
- during colonial period, 191, 209, 226, 227-228, 230
- headright system, def. 227, 227-228, 230, 279, 299, 327, 334
- Indian land cessions, 327-328, **m328**
- lottery, 327, 330-331
- of Loyalists, 298
- obtaining, 227
- after Revolutionary War, 298-299, 327-331
- western, 329, 330
- Yazoo land fraud, 328-330

landforms, 6, 10
landform regions, 6-18
Laney, Lucy Craft, 483-484, **p484**
Lanier, Sidney, 16, 29
Lanier County, 702
Laurens County, 702
Law, W. W., 618, **p618**
laws, making of, 80-85, 91
Lee, Charles, 275
Lee, Robert E., 396-398, **p397**, 399-401, 406, 412
Lee County, 702
legislature, Georgia, *see* General Assembly.
Lend-Lease program, 576
Lewis, John, 618, 622
libel, def. 61
Liberty County, 140, 277, 381, 409, 702
lieutenant governor, 76, 77, 84, 91, def. 94, 94-95, 96, 595
Life of Georgia, 506, 668
limited government, def. 54
limited jurisdiction, courts of, 112, 115-117
Lincoln, Abraham, 376, 378, **p378**
 assassination of, 420
 during Civil War, 393, 398, 406
 election of, 321, 378, 379
 as president, 385, 388, 419
 and Reconstruction, 419-420
Lincoln, Benjamin, 284, 285
Lincoln County, 224, 702
Lindbergh, Charles, 529, **p529**
line item veto, def. 85
literacy test, 488, 490, 608, 622
literature, 689-691
Little, William, 220
Little Cumberland Island, 40
Little River, 224
Little St. Simons Island, 40
Little Tybee Island, 39, 40
Little White House, 552-553, 693
livestock, 305, 409, 500, 536, 658-659
lobbyist, def. 66, 82
local government, 138-153
 city, 147-149
 county, 140-145
 funding, 152-153
 special-purpose, 150-151
location, 3, 5
Lockheed, 624, 663, 664, **p664**

Locust Grove, 325
loggerhead sea turtles, 41, **m41**
Long, Jefferson Franklin, 426-427
Long County, 702
Longstreet, William, 334, 400, 405
Lookout Mountain, 6, **p8**, **p9**
Lost Cause, 452, 453
lottery, 87, **f87**, def. 330, 683, 685
lottery, land, 330-331
Louisiana Purchase, 330, 366, 369, 371, 375
Louisville, 325, 441
Low, Juliette Gordon, 516-517, **p517**
Lowndes County, 702
Loyalists, def. 263, 273-275, 280-291
loyalty oath, 420
Ludacris, 688
Lumber City, 37
lumber industry, 37, 501, 541
Lumpkin County, 702
Lutheran religion, 235, 308
lynching, def. 477
Lyons, Judson, 452, **p452**

M

Macon, 15, 37, 149, 169, 335, 336, 379, 390, 411, 438, 455, 502, 536, 582, 654
Macon County, 410, 702
Maddox, Lester, 624, 637-638, **p637**, 642
Madison, James, 312, **p312**, 316, 341, 342
Madison County, 702
magistrate courts, 115-116, 120
majority, def. 64
Malcontents, during colonial period, 202-203, def. 203, 211
manifest destiny, def. 372
manufacturing, 341, 367, 390, 434, 501, 580, 596, 647, 660-664. *See also* industry.
maps, reading, 4
marble, 13, 536, 660
March on Washington, 620-621
March to the Sea, Sherman's, 409-410
Marcus, Bernie, 666, 694
Margravate of Azilia, 189
Marietta, 492, 493, 580, 664
Marion County, 702
Marshall, John, 347
Marshall, Thurgood, **p608**, 609

marshes, def. 16, **p**16, 39, 40
Masters Golf Tournament, 669
Mathews, George, 328, 342, **p**342
Mattingly, Mack, 644
mayor-council form, of city government, 148-149,
f148, **f**149
Mays, Benjamin, 616-617, **p**617
McClendon, Mary Latimer, 464
McCormick, Cyrus, 364, **p**364
McCullers, Carson, 68, **p**690
McDuffie County, 230, 702
McGill, Ralph, 611
McGillivray, Alexander, 301, 303, 315 , 327
McGillivray, Lachlan, 231
McIntosh, Lachlan, 254, 267, 273, 275, **p**275, 276, 277, 339
McIntosh, William, 344, **p**344
McIntosh County, 429, 702
McRae, 37
mechanical reaper, 364, **p**364
mediation, 118
Medicaid, def. 100
Medical College of Georgia, 529, 593, 682, 683
mercantilism, 190
Mercer University, 325, 438
merchants, 434
Meriwether County, 702
Methodist church, 198, 200, 308, 325, 436, 438
Methodist Episcopal church, 308
metropolitan area, def. 652
Metropolitan Atlanta Rapid Transit Authority
(MARTA), 653
Mexican-American War, 369-371, 372
middleman, def. 174
Midway, 230, 235, 282, 308
military bases, 511, 513, 571, 577, 580, 581-583, 607,
663, 664. *See also* specific bases.
military Reconstruction, 422
militia, 93, 205, 273, 281
mill villages, 503, **p**503
Milledge, John, 261, 330, **p**330
Milledgeville, 15, 36, 335, 336, 379, 409, 410, 438, 441
Miller, Caroline, 689
Miller, Zell, 119, 610, 683, 686, **p**685
Miller County, 702
mills, 337, 340, 391, 434, 501, 502, 514
mineral resources, 13, 14, 536
Minimum Foundation Program for Education Act,

608, 609
minimum wage, def. 564
mint, 337, 388
misdemeanor, def. 111, 131
missions, Spanish, 40, 178-179, 183
Mississippian culture, 168-170, 182
Missouri Compromise, def. 366, **m**366, 371, 376
Mitchell, David Brydie, 342, **p**342
Mitchell, Margaret, 689
Mitchell County, 702
modernization, 525, 526-532, 561, 566, 594, 650
monopoly, def. 81, 256-257
Monroe County, 702
Montgomery, Sir Robert, 189
Montgomery bus boycott, 615
Montgomery County, 702
Moravian settlers, 201, 349
Morehouse College, 438, 485, 609, 616, 617, 623
Morgan County, 702
Morris, William S., 594
moundbuilders, 166, **p**167, 168-169, **p**169
municipal corporation, def. 147
 government, 148-149
 services provided by, 148
municipal courts, 117
municipal government, 148-149
 courts, 117
 forms of, 148-149
 funding for, 152-153
municipality, 147
Murphy, Tom, 645, **p**645
Murray County, 702
museums, 693
Muscoogie County, 150, 702
Musgrove, John, 194
Musgrove, Mary, 194, 205, 207, 225
music, 51, 530-531, 533, 686-689
Mussolini, Benito, 574
mutual fund, 674

N

Nabrit, James, Jr., 609
National Association for the Advancement of Colored
 People (NAACP), 66, def. 480, 486, 608, 617
National Industrial Recovery Act, 557, **f**558
National Labor Relations Act, **f**558
National Recovery Administration, **f**558

National Women's Suffrage Association, 464
 National Youth Administration, (NYA), f558, 562
 Native Americans, 40, 161
 and agriculture, def. 165, 168
 and American Revolution, 274-275, 286, 300-302
 Archaic culture, 164-165
 burial mounds, 166, p167, 168-169, p169
 and civilization plan, 328, 342, 344, 345
 and contact with Europeans, 175, 176, 179, 181
 cultures, 162-171
 and disease, 175
 foods, 165, 166
 government systems of, 168
 and land, 175, 225, 310, 321, 327-328, 342
 language groups 171
 and missions, 178-179, 183
 Mississippian culture, 168-170, 182
 moundbuilders, 166, 168-169
 Paleo-Indian culture, 163-164, 165
 pottery of, 165
 prehistoric cultures, 162-170
 religious beliefs of, 175
 and removal, 340, 344-349
 tools, 164, 165, 166
 trade, 263
 Trail of Tears, m348, p348-349, 349
 treaties with, 315, 328
 and War of 1812, 342-343
 Woodland culture, 165-167, 168
 See also specific tribes.
 Natural Resources, Department of, 102-103
 naval stores, def. 227, 501, 536
 Navigation Acts, 247
 negotiation, 118
 Neighborhood Union, 486
 Neill Primary Act, 460
 neutral, def. 275, 511
 New Deal, 13, 521, 545, 551, 554-559, 560-567, 565
 agencies, f558
 in Georgia, 554, 555, 556, 557, 559
 goals of, 554
 opposition to, 559
 See also specific programs.
 New Ebenezer, 201, p202, 236
 New Echota, p346, 347, p347, 349
 New Jersey Plan, 312
 New South era, def. 498

newspapers, 307, 379
 Newton County, 702
 Niagara Movement, 480, 486, 507
 Nineteenth Amendment, to U.S. Constitution, 465
 nomad, def. 163
 nonpartisan election, def. 63, 115, 116
 nonviolent civil disobedience, 118
 Norman, Jessye, 688-689, p689
 North America, exploration and settlement of, *see*
 European exploration and settlement.
 North American Free Trade Agreement, 647
 North Carolina, 3
 North Georgia Agricultural College, 438
 North Georgia Technical College, 684
 Northen, William Jonathan, 456, p456
 Northwest Territory, 300, 310, 340
 nullification crisis, 367-368, def. 367, 375
 Nunez, Samuel, 201

O

Ocmulgee National Monument, 169, p169, 557
 Ocmulgee River, 15, 37, p37, 169, 177, 344
 Oconee County, 702
 Oconee River, 15, 37-37, 177, 303, 327
 O'Connor, Flannery, 690, 696-697
 Odum, Dr. Eugene, 19, p19
 Ogeechee River, 36, p36, 196, 224, 233, 275, 299, 300,
 327, 395
 Oglethorpe, James Edward, 187, p189, 190, 191, 193, 195,
 196, 198, 200, 201, 202, 203, 204, 206, 209, 211, 225
 Oglethorpe County, 702
 Oglethorpe University, 325, 438, 551
 Okefenokee Swamp, 16, 27, 38, 42-43, p43, 557
 Olen, Sam, p97
 Olympic Games, 623
 one-person, one-vote principle, def. 637
 Oostanaula River, 29, 403
 opera, 688-689
 ordinance of secession, 380, 409
 Orr, Dr. Gustavus James, 438
 Ossabaw Island, 39, 40, 225
 OutKast, 688
 overdraft, def. 672

P

Paine, Thomas, 264, 265
 Paine College, 486

Paleo-Indian culture, 163-164
 palisades, def. 167, 221
 pandemic, def. 515
 parish, def. 221, **m**221
 parks, state, 693
 parole, def. 99
 Parks, Rosa, 615, **p**615
 pasteurization, def. 659
 Patriots, def. 263, 272-278, 280-290, 298
 Patrons of Husbandry, **p**454, 455
 Paulding County, 702
 Peach County, 702
 peaches, 500, 657
 peanuts, 537, 657
 Pearl Harbor, 571, 578-579
 pecans, 500, 536, 547, 657
 Pemberton, John S., 503
 Penn, Lemuel, 621-622
 People's Party, 456-459
 Perdue, Sonny, **p**85, **p**102, **p**144, 644, **p**644
 personal finance, 647, 672-675
 Peterson, Hugh, 582
 philanthropist, def. 694
 Phinizy Swamp, 34
 physical features, of the state, 26-45
 Pickens, Andrew, 283
 Pickens County, 660, 702
 Piedmont region, 14-15, **p**14, **p**15, 331
 Pierce, William, 311, 315
 Pierce County, 702
 Pike County, 702
 Pilgrim Health and Life Insurance Company, 506, 514
 Pine Mountain, **p**15, 639
 Plains, 641
 plaintiff, def. 111, 113
 plantations, 40, def. 181, 189, 209, 215, 232, 305, 331, 338, 357, 433
 platform, def. 407
 plea, def. 121
Plessy v. Ferguson, 474, 609
 plural executive system, def. 96
 political cartoons, 289, 380, 408, 458, 559
 political ideology, def. 65
 political parties, 48, def. 65, 94, 95
 Constitutional Union, 375, 378-379
 Democratic, 65, 373, 374, 377, 378, 398, 407, 449, 607, 610, 629, 635, 636, 638, 640, 644
 Free Soil, 373
 Liberty, 373
 Populist, 65, 456-459
 Republican, 65, 376, 377, 378, 423, 629, 637-638, 639, 640, 644
 Southern Rights, 375, 634
 States' Rights, 368
 Union, 368
 Whig, 374, 376, 378
 politics,
 in 1920s, 531-532
 and county unit system, 428, 459-460, 592-593, 631, 635-637
 interest groups, 66, 82
 rise of two-party system, 637-638
 Polk County, 702
 Polo, Marco, 173
 polling place, def. 63
 poll tax, 428, 488, 597
 pollution, 103
 Pontiac's Rebellion, 248
 Pope, John, 422
 popular sovereignty, def. 373, 374, 378
 population, 51, 230, 322, 327, **f**507, 603
 populism, 456, 462
 Populist party, 456-459, def. 456
 ports,
 deepwater, 101, **p**101, 653, **p**653
 inland, 653
 poultry industry, 658, 659
 powers,
 of government, 56
 of governor, 92-94
 preamble, def. 58
 precinct, def. 63
 precipitation, def. 21, **m**21, 21, 42
 prejudice, 473, def. 491, 492, 493
 Presbyterian church, 235, 236, 308, 325, 436, 437, 438
 president of the Senate, 76, 77
 president pro tempore, of Senate, 77
 Preston, 150
 Prevost, Augustine, 281, 282
 primary elections, 63
 principles, of government, 48, 53, 54-57
 prisoners of war, 582, 591, **p**591
 prisons,
 Civil War, 410-411

reform, 594-595
probable cause, 121
probate courts, def. 115, 142, 144
probation, def. 132
Proclamation of 1763, 248-249, **m**248
profit, def. 234, 433, 673
Progressive Era, 445, 462-463, 466, 565
progressivism, def. 462
property taxes, 152
proprietors, def. 189
Providence Canyon, **p**16
provincial congress, def. 258, 259, 262, 266, 267, 274
Public Safety, Department of, 100-101
Public Service Commission, 97, 98, 594
public service commissioner, 97
Public Works Administration (PWA), 557, **f**558, 559
Pulaski, Casimir, 285
Pulaski County, 702
purchasing power, def. 538
Puritans, 230, 235
Putnam County, 703

Q

Quakers, 230-231
Quality Based Education (QBE), 683
Quitman County, 150, 703

R

Rabun County, 703
racism, def. 409, 480, 491, 566
radical, def. 277
radio, 530, 667
railroads, 18, 336, **m**337, 376, 378, 454, 499, 500, 506
 Central of Georgia, 336, 652
 and Civil War, 391, 402-403, 412
 Georgia Railroad, 336
 Macon and Western, 336
 modern, 652-653
 in New South Era, 499
 rates, 595-596
 during Reconstruction, 435
 regulation of, 463
 Western and Atlantic, 336, 435
Rainey, Gertrude "Ma," 531, 533, 687
rainfall, 21
Ralph Mark Gilbert Civil Rights Museum, 618, **p**618
Ramspeck, Robert, 556

Randolph County, 703
rap and hip-hop music, 688
ratification, def. 58, 315-316
rationing, def. 586, 586-588
reading skills,
 cause and effect, 322
 comparing and contrasting, 50
 distinguishing fact from opinion, 522
 finding the main idea, 242
 inferring, 446
 reading maps, 4
 sequencing, 158
 summarizing, 602
Reagan, Ronald, 643
reaper, mechanical, 364, **p**364
reapportionment, 637
reasonable suspicion, def. 131
recession, def. 564
Reconstruction, 418-429, 430-439
 congressional, 422-427
 economic, 430-437
 end of, 427-428
 in Georgia, 422
 military, 422, 423, 425-427
 presidential, 419-422
Red Sticks, 342-343
Redeemers, def. 427, 428, 435
redistrict, def. 74
referendum, def. 64
region, def. 3
regional youth detention center, def. 131
regions, of the state, 3, 6-18. *See also* specific regions.
relief, 549, 554, def. 559, 564
religion, 528
 after the American Revolution, 304, 307-309, 325
 in Civil War, 393
 and colonial period, 210, 234-236
 during Reconstruction, 436-437
 and schools, 438
 and slaves, 308
 See also specific denominations.
Reorganization Act, 531
reparations, def. 573
repeal, def. 250
repossess, def. 675
representative democracy, def. 53
Republican party, 77, 377, 423, 452. *See also* political

parties, politics.
 reserved powers, 56
 reservoirs, def. 103
 resources, natural, 660-661
 retail, def. 665
 revenue, def. 85
 bond, 151
 local government, 151, 152-153
 state, 85, 86-87, 93
 Revolutionary War, *see* American Revolution.
 Reynolds, John, 217-220
 rice, 209, 226, 232, 233, 304-305, 332, 357-358, 364, 432
 Rice Boats, Battle of, 273-274
 Richmond County, 140, 150, 277, 306, 475, 481, 703
 Richmond County, Academy of, 306
 Rich's, 507, 165
 Rickenbacker Field, 582
 Ridge and Valley region, 10-11
 Ridge, John, 349
 Ridge, Major, 345, **p**345, 346, 347, 349
 Ringgold Gap, 403
 rivers, 14-15, 27-38, **m**28. *See also* specific rivers.
 Rivers, Eurith D. "Ed," 563, **p**563
 roads, 51, 142, 635
 building, 463, 528
 early, 341
 interstate highways, 651-652
 Robins Air Base, 582
 robotics, 680
 Rockdale County, 703
 Rock Eagle Mound, 166, **p**167, 693
 Rome, 177, 390
 Roosevelt, Franklin D., 693
 death, 553, 590
 election, 550-551, **p**550, 561-562, 576
 and Georgia, 43, 552-553, 559
 and New Deal, 554, 562
 in World War II, 576
 Ross, John, 345, **p**345, 346, 347, 349
 Rothschild, Jacob, 611
 royal colony, def. 189, 215, 216-225, 226-229
 royal governors, 704. *See also* specific governors.
 Rules and Regulations of 1776, 274
 rural, def. 365, 459, 460
 rural electrification, 553, 560-561
 Rural Free Delivery bill, 461
 Russell, Richard B., 531, 551, 581, 610, 631, 664

Russell Lake, 35

S

Saffir-Simpson Hurricane Scale, 23, **f**24
 St. Augustine, 205, 342
 St. Catherines Island, 39, 225, 429
 St. Marys, 16, 342
 St. Marys River, 38, 43, 224, 228
 St. Simons Island, **p**39, 40, 41, 203, 206
 sales tax, 86, **f**87
 Salzburg settlers, 201, 202, 234
 Sanders, Carl, 622, 636-637, **p**636, 641, 653, 683
 Sandersville, 661
 Sapelo Island, 19, 40, 41, 225, 332
 Satilla River, 38, **p**38, 233
 Savannah, 16, 24, 147, 14, 306, 339, 342, **p**548, 652, 654, 661, 683
 after American Revolution, 305, 325
 in antebellum period, 379
 as capital, 440, 441
 and civil rights movement, 618
 during Civil War, 387, 390, 391, 394, 395, 409-410, 413
 colonial period, 193-196, 209, 221, 228, 234, 236, 237
 design of, 194
 founding of, 193-195
 and preservation, 692
 in Revolutionary War, 281-282, 284-285, 290
 seaport, 34, **p**35, 101, **p**101, 653
 siege of, 284-285
 during World War II, 582, 583-585
 Savannah State College, 614
 Savannah River, 15, 34-35, **p**34, 165, 177, 181, 189, 190, 191, 224, 233, 272, 273
 savings account, 673
 scalawags, def. 423, 424
 Schley, William, 337
 Schley County, 703
 schools,
 for blacks, 437-438, 475, 481, 483-487
 consolidated, 683
 desegregation of, 615
 districts, 151
 funding for, 562
 integration of, 607, 610
 public, 306, 393, 423, 437-438, 453, 609
 school term, 438, 563
 segregated, 438, 610

state superintendent of, 96-97
See also education.

Scots-Irish, 231, 235

Scott, Winfield, 393

Screven County, 284, 703

Sea Island, 40, 41

sea islands, *see* Golden Isles, specific islands.

sea turtles, 41

seaports, 101, 653

search warrant, def. 61

Sears, Leah Ward, 119, **p119**

secede, def. 316

secession, 368, 377, 379-380, 387

Second Continental Congress, 258, 259, 263, 265, 266, 267, 273, 297

secretary of state, 96

sectionalism, 364-365, def. 365

Securities and Exchange Commission (SEC), **f558**

segregate, def. 436

segregation, 439, 473-481, 483, 485, 488-490, 556, 566, 593, 609, 617, 635, 637

Seminole County, 703

Senate, Georgia, 72, 73, **p73**
 committees of, 77-78
 districts, 74
 leaders of, 77, 78
 making laws, 80-85
 member requirements, 72
 organization of, 76-77
 sessions, 74-75
See also General Assembly; House of Representatives, Georgia.

separate-but-equal concept, def. 474, 609

separation of powers, def. 56

sequencing, 158

Sequoyah, 346, **p346**

service industry, def. 504, 504-505, 647, 665-671

settlement, of Georgia, 190, 193-196

settlers,
 early, 192, 194-196
 Highland Scots, 202
 Jewish, 201
 Moravians, 201
 Salzburgers, 201, 202
 Scots-Irish, 231

seven deadly sins, 133-134

Seven Years War *see* French and Indian War.

sharecropping, 433-434, 439, 454, 498, 499, 513, 535, **p535**, 555, 556, 566, 567

Sheftall, Mordecai, 261, 279

sheriff, 143, 277

Sherman, William Tecumseh, 385, 404, 411, 432
 Atlanta Campaign, 406-408
 "March to the Sea," 409-410

Sherrod, Charles, 619

Shiloh, 396

shipyards, 583-585

shopping center, def. 665, **p665**

Shorter College, 438

Sibley Commission, 611

siege, of Savannah, 284-285, def. 285

Singer-Moye site, 168-169

sit-ins, def. 617

slander, def. 61

Slaton, John, 493, **p493**

slave codes, def. 233, 356, 361-362, 378, 392

slave laws, 215, 375

slavery, 173-174, def. 200, 321, 355, 368, 372-373, 377-378, 379
 and antislavery movement, 365, 377
 and Civil War, 409
 in colonial period, 200, 226
 compromises over, 366
 Emancipation Proclamation, 387, 398-399
 in Georgia, 356-363
 growth of, in state, 305, 327, 331, 332, 355, 364
 resistance to, 375
 trade, 174
See also African Americans, blacks, slaves.

slaves, def. 173, 181, 230, 312, 375, 387, 409
 and cotton production, 331
 families, 360-361
 in Georgia, 231-233, 298, 304-305
 living conditions of, 359-360
 ownership of, 332-333
 population of, 230
 and religion, 236, 308, 361, 392
 restrictions on, 356
 revolts by, 362
 work of, 232-233, 357-359
See also slavery.

slave state, def. 366

Smith, Hoke, 462, **p462**, 489, 490, 531

Smith, James M., 427

Smith, Rankin, 668
 Smith-Hughes Act, 463
 Smith-Lever Act, 463
Smith v. Allwright, 608
 smuggling, def. 247
 Smyrna, 149
 Social Security Administration (SSA), f558, 561, 565
 Sons of Liberty, 250, 251, 259, 260, 262
 South Carolina, 3, 228, 232, 233
 South Georgia College, 681
 Southeastern Natural Sciences Academy, 34
 Souther Field, 513, 529
 Southern Christian Leadership Conference (SCLC),
 def. 616
 Southern Manifesto, 610
 southern rock music, 688
 sovereignty, def. 54
 Spain,
 colonies of, 178
 exploration by, 174, 176-178
 and French and Indian War, 222-223, m222, 248
 missions, 40, 178-179, 183
 threat of, 147, 190, 200
 war with, 205-207, 511
 Spalding County, 703
 speaker pro tempore, of House, 77
 speaker of the House, 76, 77, 83, 84, 95
 spear points, p162, 164, p164, 165
 special-purpose districts, def. 150, 150-151
 special purpose local option sales tax (SPLOST), 152-153
 special use tax, 153
 Spelman College, 487, p487
 sports, 665, 667-669
 Stallings Island, 165
 Stamp Act, 250
 Stamp Act Congress, 250
 State Board of Education, 463
 State Capitol, p52-53, p54, p70-71
 state courts, def. 115, 142
 state flag, 610
 state government, *see* government, state.
 state parks, 103
 state superintendent of schools, 96-97
 Statenville, 150
 states' rights, def. 367, 371, 373, 387, 453, 610
 States' Rights Party, 368
 status offender, def. 128

statute, def. 97
 statutory official, def. 97
 Stephens, Alexander H., 375, 376, 380, 381, 387,
 407-408, 411, 421, 453
 Stephens, William, 209, 211
 Stephens County, 381, 703
 Stewart County, 16, 168, 703
 stock, 673, def. 674
 stock market, def. 538, 539
 Stone Mountain, p14-15, 14, 478, 621, 635
 Stowe, Harriet Beecher, 375
 strike, def. 559
 strong mayor-council form, 148-149, f148
 Stuart, John, 275
 Stuckey's, 547
 Student Nonviolent Coordinating Committee
 (SNCC), def. 618, 619
 subsidy, def. 555, 564
 subsistence, def. 333, 333
 suburbs, def. 652
 suffrage,
 blacks and, 423, 425, 428
 grandfather clause, 489, 490, 608
 women and, 464
 for young people, 596-597
See also voting.
 Sugar Act, 249-250
 summarizing, 602
 Sumter County, 703
 Sunbury, 230, 235, 281-282, 342
 superintendent of schools, 438
 superior courts, state, def. 114, m115, 121, 122, 132,
 133, 144
 Supreme Court, state, def. 113, p113, 113-114, 119
 Supreme Court, U.S., 57, 330, 347, 373, 377, 423, 460, 473,
 474, 481, 563-564, 596, 597, 607, 609, 635, 636, 637
 surplus, def. 539, 564
 Suwannee River, 43
 swamps, 34, 42-43, def. 423
 "Sweet Auburn," 483
 syllabary, 346
 Synovus, 666

T

Talbot County, 703
 Taliaferro County, 51, 703
 Tallulah Falls, 33

Tallulah Gorge, **p33**
Tallulah River, **33, p33**
Talmadge, Eugene, 531, 559, 561, **p561**, 562, 563, 564, 592-594, 630, 632
Talmadge, Herman, 608, 609, 611, 631, 632-633, 682
tariff, def. 365, 367-368, 376, 378
Tattnall County, 703
tax commissioner, 144
taxes, 64, 86-87, **f87**, 142, 151
 ad valorem, 152
 during colonial period, 221, 247, 249, 250, 251
 excise, 87, **f87**, 152, 528
 gasoline, 528
 income, 86, **f87**, 391, 455
 poll, 428
 property, 152, 562
 sales, 86-87, **f87**, 152, 608
 tariffs, def. 365, 367-368, 376, 378
Taylor County, 703
Tea Act, 256-257
Technical College System of Georgia, 100, 683, 684
technological developments,
 cotton gin, 331, **p331**
 for households, 526-527
 railroads, 336, **m337**
 steamboats, 334-335
Techwood Homes, 557, **p557**
Tecumseh, 340, **p340**, 341, 342
television, 667
Telfair, Edward, 261, 339
Telfair County, 633, 703
tenant farming, 433-434, 439, 498, 499
Tennessee Valley Authority (TVA), **f558**
Terminus, 336
Terrell County, 703
Terry, Alfred, 426
Texas, 369-370
textiles, 337, 340, 391, 502-503, 534, 536, 539, 559, 662-663
Thirteenth Amendment, to U.S. Constitution, def. 420, **f420**, 421, 439
Thomas County, 332, 703
Thompson, Melvin, 632-633
Thomson, 21, 336
Thrashers, Atlanta, 668
Three Governors Controversy, 632-633
Tift County, 703

Tifton, 432
tobacco, 227, 305, 331, 332, 333
Toccoa, 652
Tomochichi, Chief, 194, **p194**, 197, 198, 205, 225
Tom's Foods, 537
Tondee's Tavern, 251, 262
Toombs, Robert, 332, 375, 378, 387, 397, 411
Toombs County, 703
Tories, 263
tornado, 22-23, **f23**
tort, def. 111
tourism industry, 13, 41, 86, def. 102, 504-505, 537, 652, 665, 669
towns, growth of, 228, 506
Towns County, 703
Townshend Revenue Act, 251, 252, 253, 256
trade, 94, 147, 310, 312, 315, 430, 434
 international, 101, 102, 497, 539, 573, 653
 and mercantilism, 190
 with Native Americans, 179, 204, 209, 227, 300
 routes, 173-174
Trail of Tears, **m348**, **p348-349**, 349
transportation, 327, 334-336, 341, 507, 566, 650-654
 aviation, 528-529
 railroads, 334, 336, **m337**, 528, 652-653
 roads, 341, 651-652, **m652**
 seaports, 101, 653
 steamboats, 334-335, **p334**
 water, 334, 335, 653
Transportation, Georgia Department of, 101
treaty, def. 81, 327
 of Augusta, 224, 249, 254, 301, 345
 of Fort Jackson, 343
 of Indian Springs, 344
 with Indian tribes, 301, 328, 345
 of New Echota, 347
 of New York, 327, 328, 330
 of Paris (1763), 222
 of Paris (1783), 295, 298
 of Tordesillas, 174, **m175**
 of Washington, 344
trees, 14, 18, 40, 227. *See also* lumber industry.
Trethewey, Natasha, 690-691, **p691**
Trent County, 703
Troup, George, 344
Troup County, 703
truant, 129

truck farming, def. 500, 657
Truman, Harry S., 58, 607, **p**607, 634
trustees, 190, def. 191, 192, 193, 200, 201, 203, 208, 210, 225
Tugaloo Lake, 32
Tugaloo River, 33, 300
tuition, def. 306
Turner, Henry McNeal, 423-424, **p**424, 478, 484
Turner, Ted, 667, 668, 694, **p**695
Turner Broadcasting, 667, 670
Turner County, 703
Tuskegee Institute, 479
tutors, def. 228
Twenty-fourth Amendment to U.S. Constitution, 597
Twenty-sixth Amendment to U.S. Constitution, 597
Twiggs County, 33, 703
Tybee Island, 39, 40, 196, 285, 395

U

Uhry, Alfred, 690
Uncle Tom's Cabin, 375, **p**375
Underground Railroad, def. 368
unemployment, 539, 540, 545, 547, 561
unicameral, def. 297
unincorporated area, def. 143
Union blockade of coast, during Civil War, 390, **m**390, 392, 393
Union Camp, 661
Union County, 703
unions, labor, 536, 557, 559
U.S. Constitution, *see* Constitution, U.S.
U.S. government, *see* government, federal.
University of Georgia, 19, 325, 393, 438, 682
 desegregation of, 612
 establishment of, 307
University System of Georgia, 100, 146, 531, 592-594, 639
University of West Georgia, 681
unruly child, def. 128, 128-129
UPS, 655
Upson County, 703
urban, def. 365, 462, 506-507, 525, 527-528, 566, 649
user fees, 153

V

Valdosta, 149, 654
Vandiver, Ernest, 611, **p**611, 634
Vann, Chief James, 350

Vann, Joseph, 350, 351
verdict, def. 122
vestry, def. 231, 234
veto, 57, def. 85, 93
 line item, def. 85
Vicksburg, 399
Vidalia onions, 657
Vinson, Carl, 557, 577, **p**577, 581, 582, 631, **p**631, 664
Virginia Plan, 312
visual arts, def. 691, 692
vocational education, 479
voting, 51, 62-64, 123, 142, 422, 425, 426, 428, 455, 456, 462
 and disfranchisement, 488-490
 districts, 63, 631, 635, 637
 fraud, 377
 grandfather clause, 489, 490, 608
 polls, 63
 requirements for, 62
 and Voting Rights Bill, def. 622, 637
 for women, 426
 for young people, 596-597
 See also suffrage.

W

Wade-Davis Bill, 420
Walker, Alice, 690, 696-697
Walker, Clifford, 532
Walker County, 703
Walton, George, 265, 266-267, **p**267, 339
Walton County, 703
war,
 of 1812, 340-343, **m**343
 Civil, 386-403, 404-413
 Cold, 631, 663, 664
 French and Indian, 217-219, 240, 246, 247-248, 249
 of Jenkins's Ear, 205-207, 209
 Korea, 664
 Mexican-American, 369-371, 372
 Revolutionary, 240, 247-249, 256-267, 273-274, 280-291
 World War I, 445, 497, 499, 511-515
 World War II, 521, 572-576, 575, 578, 579-589, 590
Ware County, 703
Ware High School, 475
Warm Springs, 43, 550, 557
Warner Robins Air Field, 582

- Warren County, 703
- Washington, 306, 332
- Washington, Booker T., 478-479, **p478**
- Washington, George, 218, 264, 284, 288, 303, 311, 312, 325, 327, 338, 339
- Washington County, 661, 703
- Wassaw Island, 39, 40
- water resources, 16, **m17**, 103, 655
- Watson, Thomas Edward, 456, **p456**, 457, 458, 461, 465, 489, **p490**, 513, 531
- WAVES, 582-583
- Waynesborough, 339
- Wayne, Anthony, 289, 290, 330, 339
- Wayne County, 330, 703
- weak mayor-council form, def. 149, **f149**
- weather, def. 20, 21-25
- Webster County, 150, 703
- Wereat, John, 284
- Wesley, Charles, 198
- Wesley, John, 198, 200, **p200**
- Wesleyan College, 325, 438
- West Indies, 161, 232
- Western and Atlantic Railroad, 336, 402-403, 435, 451
- Weston, 150
- Westville, 338, **p391**
- wetlands, def. 34-35, 103
- Wheeler County, 703
- Whig Party, 263
- White County, 703
- white primary, 488-489, def. 488, 597, 608, 632, 634
- white supremacy, def. 430-431, 449, 453, 454, 457, 562, 593, 597, 610, 619, 632, 634
- Whitefield, George, 209-210, **p210**, 229
- Whitfield County, 703
- Whitney, Eli, 331
- Wilcox County, 703
- wildlife, 42, 43
- Wilkes County, 140, 277, 282, 283, 306, 703
- Wilkinson County, 330, 703
- William Breman Jewish Heritage and Holocaust Museum, 588, **p589**, 590
- Wilson, Woodrow, 41, 511-511, **p511**, 514, 515, 693
- Wirz, Henry, 410, 411
- Wolf Island, 40
- women, 116
- in 1920s, 529, **p529**
- during depression, 549
- and politics, 465
- suffrage, 426, 464, 465
- in World War II, 582-583, 585, 586
- Women's Christian Temperance Union, 464
- Woodland culture, 165-167, 168
- Woodruff, Ernest, 504, 536, 694
- Woodruff, Robert, 536, **p537**, 547
- Worcester v. Georgia*, 347
- Works Progress Administration (WPA), **f558**, 567
- World War I, 445, 497, 499, 511-515, def. 511, 572, 573
- causes of, 511-511
- end of, 514-515
- Georgia in, 513-514
- U.S. entry, 511-513
- World War II, 521, def. 575
- causes of, 572-576, 578
- and the economy, 580-586
- end of, 590
- in Georgia, 581-588
- and the Holocaust, 588-589
- military forces, 581-583
- and politics, 592-597
- social effects, 588
- U.S. entry into, 579
- Worth County, 703
- Wright, James, 222-224, **p223**, 230, 237, 249, 250, 251, 253, 259, 261, 262, 263, 264, 272, 273, 274, 284, 289, 290, 298
- Wright, Richard, 486, **p486**
- Wright brothers, 528-529
- Wrightsboro, 230
- WSB radio, 530
- Y**
- Yamacraw Bluff, 194
- Yamacraw Indians, 194
- Yamasee Indians, 181, **p182**
- Yazoo land fraud, 327, def. 328, 328-330, **p329**
- Yerby, Frank, 689
- Yorktown, 289
- Young, Andrew, 616, 623, **p623**
- Z**
- Zimmermann telegram, 512-513
- Zion, 235
- Zouberbuhler, Bartholomew, 210, 234, 235, 236
- Zubly, John, 235, 262, 263

Acknowledgements

Picture Credits: The following abbreviations are used for sources from which several illustrations were obtained.

AHS	Atlanta Historical Society
AJ&C	<i>Atlanta Journal & Constitution</i>
AUSC	Atlanta University Special Collections
GDED	Georgia Department of Economic Development
GHS	Georgia Historical Society
GSA	Georgia State Archives
LC	Library of Congress
NA	National Archives

FRONT MATTER: Cover: All photos by Reggie Lankford except statue: Robin McDonald. i Reggie Lankford. ii-iii Reggie Lankford. iv (above left) Mark Albertin; (below left) courtesy Gwen Y. Wood; (above right) Tommy Lankford; (below right) courtesy Eric Grigsby. v (top left) courtesy Frank Jones; (center left) courtesy Jason J. Adams; (below left) courtesy Diane R. Collier; (top right) Stephanie Conley; (center right) Ramona Harris; (below right) courtesy Ann Hince. vi (top) courtesy Keith Hood; (center) courtesy Missy Johnson; (below) courtesy Delphine Patterson. vii Reggie Lankford. viii-ix Reggie Lankford. x-xi Reggie Lankford. xii-xiii Reggie Lankford. xiv-1 Reggie Lankford. **CHAPTER ONE:** 2-3 Reggie Lankford. 5 Reggie Lankford. 6-7 Reggie Lankford. 8 (below) Reggie Lankford. 8-9 Reggie Lankford. 9 GDED. 10-11 Reggie Lankford. 11 GDED. 12-13 (all) Reggie Lankford. 14 (below) GDED. 14-15 Reggie Lankford. 15 (below) Reggie Lankford. 16 Robin McDonald. 17 Reggie Lankford. 17 (both) GDED. 18 GDED. 19. University of Georgia Odum School of Ecology. 20 (left) Reggie Lankford; (right) Brian Stansberry. 21 (both) Reggie Lankford. 22 Justin Hobson. 23 NASA. 25 NOAA. 25 (above) Reggie Lankford; (below) GDED. 26-27 (both) Reggie Lankford. 29 (above) Reggie Lankford; (below) GDED. 30-31 Reggie Lankford. 31 (above) GDED; (below) Robin McDonald. 32-33 GDED. 33 Robin McDonald. 34-35 Wikipedia Commons. 35 (above) Jonas N. Jordan, U.S. Army Corps of Engineers; (below) Robin McDonald. 36 (below) GDED.

36-37 Reggie Lankford. 37 (below) Robin McDonald. 38 (above) Robin McDonald; (below) GDED. 39 Robin McDonald. 40 (both) GDED. 41 (above) Reggie Lankford; (below) GDED. 42 (above) GDED. 42-43 Reggie Lankford. 43 (above) Wikipedia Commons. 44-45 Reggie Lankford. 46 (above) Robin McDonald; (below) GDED. 47 Robin McDonald. **UNIT ONE:** 48-49 Stock Xpert. 51 Dept. of Defense photo by Senior Master Sgt. Thomas Meneguín, U.S. Air Force. **CHAPTER TWO:** 52-53 Reggie Lankford. 54 Reggie Lankford. 55 Wikipedia Commons. 56 (Above) U.S. Mint; (below) U.S. Navy photo by Mass Communications Specialist 2nd Class Felicito A. Rustique, Jr. 57 (above left) Corbis; (above right and below) Robin McDonald. 58 Robin McDonald; 59 British Museum. 60 Reggie Lankford. 61 Reggie Lankford. 62 Reggie Lankford. 63 (both) Stock Xpert. 64 courtesy Saxby Chambliss. 65 (both) Stock Xpert. 66 Stock Xpert. **CHAPTER THREE:** 70-71 LC. 72 Georgia General Assembly. 73 (left) Reggie Lankford; (right) Georgia General Assembly. 74 Georgia General Assembly. 75 (both) Reggie Lankford. 76 Georgia General Assembly. 77 Georgia General Assembly. 78 Georgia General Assembly. 79 Georgia General Assembly. 80 Georgia General Assembly. 81 Georgia General Assembly. 82 Georgia General Assembly. 84 Georgia General Assembly. 85 Office of the Governor. 86 Georgia General Assembly. 87 Reggie Lankford 89 Georgia General Assembly. **CHAPTER FOUR:** 90-91 Office of the Governor. 92 Office of the Governor. 93 Office of the Governor. 94 Office of the Governor. 95 Office of the Lieutenant Governor. 96 Office of the Secretary of State. 97 (above) Office of the Attorney General; (below) Georgia Department of Agriculture. 99 Georgia Department of Education. 100 Wikipedia Commons. 101 GDED. 102 Office of the Governor. 103 Reggie Lankford. 104-105 (all) Georgia Bureau of Investigation. **CHAPTER FIVE:** 108-109 Photo by Ashley G. Stollar, Administrative Office of the Courts of Georgia. 110 Reggie Lankford. 111 Stock Xpert. 112 Photo by Ashley G. Stollar, Administrative Office of the Courts of Georgia. 113 (above) Foster & Associates; (below) Photo by Ashley G. Stollar, Administrative Office of the Courts of

Georgia. 116 Photo by Ashley G. Stollar, Administrative Office of the Courts of Georgia. 117 (both) LC. 118 Reggie Lankford. 119 Photo by Ashley G. Stollar, Administrative Office of the Courts of Georgia. 120 Stock Xpert. 121 Stock Xpert 122 Stock Xpert. GSA. 123 Keith Burtis. **CHAPTER SIX:** 126-127 Stock Xpert. 128 Jupiter Images. 129 Stock Xpert. 130 Stock Xpert. 131 Stock Xpert. 132 Stock Xpert. 133 Stock Xpert.. 135 Stock Xpert. 137 Reggie Lankford. **CHAPTER SEVEN:** 138-139 Reggie Lankford. 140 Reggie Lankford. 142 (both) Reggie Lankford. 143 Reggie Lankford. 144 Office of the Governor. 146 Reggie Lankford. 148 Reggie Lankford. 150 Reggie Lankford. 151 (above) GDED; (below) Reggie Lankford. 153 Reggie Lankford. 155 Reggie Lankford. **UNIT TWO:** 156-157 LC. 159 Robin McDonald. **CHAPTER EIGHT:** 160-161 Architect of the Capitol. 162 (both) Alabama Museum of Natural History. 163 Pinson Mounds State Archeological Area, TN. 164 (below) Pinson Mounds State Archeological Area, TN; (right, both) Alabama Museum of Natural History. 165 (both) courtesy Ken Sassaman. 166 Pinson Mounds State Archeological Area, TN. 167 (above and below right) Robin McDonald; (below left) GDED. 168 Pinson Mounds State Archeological Area, TN. 169 (above) Robin McDonald; (below) GDED; (right) Reggie Lankford. 169 GDED. 170 GDED. 171 LC. 172 LC. 174 (above) LC; (below) Jupiter Images. 176-177 LC. 178 LC. 179 LC. 180 (above) National Park Service; (below) LC. 182 South Caroliniana Library, University of South Carolina. 183 Wikipedia Commons. 183 LC. 184 NCDAAH. 185 LC. **CHAPTER NINE:** 186-187 Robin McDonald. 188 Robin McDonald. 189 *First Lessons in Georgia History*, 1898. 190 GSA. 191 Louisiana State Museum. 192 (above) *First Lessons in Georgia History*, 1898; (below) GSA. 193 GHS. 194 GSA. 195 Robin McDonald. 196 GSA. 197 Reggie Lankford. 198-199 Winterthur Museum. 200 LC. 201 *First Lessons in Georgia History*, 1898. 202 GHS. 203 (both) Robin McDonald. 204 GSA. 205 Robin McDonald. 206 (above) *First Lessons in Georgia History*, 1898. 206-207 LC. 207 (above) *First Lessons in Georgia History*, 1898. 208 Robin McDonald. 209 GHS. 210 GHS. 211 Reggie Lankford. **CHAPTER TEN:** 214-215 Reggie Lankford. 217 (above, both) *First Lessons in Georgia History*, 1898; (below) GDED. 218-219 LC. 220 *First Lessons in Georgia History*, 1898. 221 LC. 222 LC. 223 GSA. 224 LC. 225 *First Lessons in Georgia History*, 1898. 226 LC. 227 Reggie Lankford. 228 LC. 229 *First Lessons in Georgia History*, 1898. 230 LC. 231 (above) Reggie Lankford; (below) *First Lessons in Georgia History*, 1898.. 232 LC. 233 West Virginia State Archives. 234 Reggie Lankford. 235 Reggie

Lankford. 236 GHS. 237 LC. **UNIT THREE:** 240 Architect of the Capitol. 243 LC. **CHAPTER ELEVEN:** 244-245 LC. 247 Robin McDonald. 249 LC. 250 LC. 251 LC. 252 LC. 253 *First Lessons in Georgia History*, 1898. 254 (above) Wikipedia Commons; (below) Eufaula Atheneum. 255 (above) LC; (center) Meneerke Bloem; (below) GDED. 256 National Portrait Gallery, London. 257 LC. 258 LC. 259 (both) LC. 260 (above) LC; (below) *First Lessons in Georgia History*, 1898. 261 *First Lessons in Georgia History*, 1898. 262 *First Lessons in Georgia History*, 1898. 263 Robin McDonald. 264 (both) LC. 265 LC. 266 courtesy of Georgia Archives, Georgia Capitol Museum, 1992.23.0011 267 (above) courtesy of Georgia Archives, Georgia Capitol Museum, 1992.23.0021; (below) courtesy of Georgia Archives, Georgia Capitol Museum, 1992.23.0015. 268 (below) Bruce Roberts; (bottom) GDED. 269 LC. **CHAPTER TWELVE:** 270-271 Robin McDonald. 273 LC. 274 GSA. 275 GHS. 276 LC. 278 GSA. 279 Reggie Lankford. 280 courtesy of Georgia Archives, Georgia Capitol Museum, 1992.23.0013. 281 Robin McDonald. 282 Kurz and Allison. 283 Wadsworth Atheneum. 284 GSA. 285 (above) Reggie Lankford; (below) LC. 286 *First Lessons in Georgia History*, 1898. 287 *First Lessons in Georgia History*, 1898. 288 (above) *First Lessons in Georgia History*, 1898; (below) *First Lessons in Georgia History*, 1898. 289 LC. 290 Architect of the Capitol. 291 Hargrett Rare Book and Manuscript Library, University of Georgia Libraries. 293 LC. **CHAPTER THIRTEEN:** 294-295 LC. 297 *First Lessons in Georgia History*, 1898. 298 (both) GSA. 299 Reggie Lankford. 300 Reggie Lankford. 300-301 LC. 302 Smithsonian Institution. 303 Museum of the City of Mobile. 304 LC. 305 *First Lessons in Georgia History*, 1898. 306 Robin McDonald. 307 GSA. 308 (above) LC; (below) Robin McDonald. 309 LC. 310-311 Architect of the Capitol. 312 LC. 315 LC. 316 LC. 317 (both) GSA. **UNIT FOUR:** 320-321 Reggie Lankford. 323 Reggie Lankford. **CHAPTER FOURTEEN:** 324-325 Robin McDonald. 327 *Harper's Weekly*. 329 (both) GSA. 330 courtesy of Georgia Archives, Georgia Capitol Museum, 1992.23.0023. 331 (both) *First Lessons in Georgia History*, 1898. 332 Reggie Lankford. 333 Robin McDonald. 334 (both) LC. 335 LC. 336-337 AHS. 338 (both) Reggie Lankford. 339 LC. 340 LC. 341 LC. 342 (both) GSA. 343 LC. 344 GSA. 345 (both) LC. 346 (above) Robin McDonald; (below) LC. 347 Reggie Lankford. 348-349 Woolaroc Museum. 350-351 (all) Reggie Lankford. **CHAPTER FIFTEEN:** 354-355 Robin McDonald. 357 Robin McDonald. 358 (above) LC; (below) Reggie Lankford. 359 (above) GSA; (below) LC. 360 (above) LC; (below) Reggie Lankford..

361 (above) GDED; (below) Robin McDonald. 362 (both) LC. 363 *The Underground Railroad from Slavery to Freedom*, 1898. 364 (both) LC. 365 LC. 366 LC. 367 LC. 368 LC. 369 LC. 370 (both) LC. 371 LC. 373 LC. 375 LC. 376 (both) LC. 377 LC. 378 (all) LC. 380 LC. 381 LC. **CHAPTER SIXTEEN:** 384-385 LC. 387 GSA. 386 LC. 387 Corbis. 388 LC. 389 LC. 391. Reggie Lankford. 392 (above) LC; (below) AHS. 393 LC. 394 LC. 395 (above) GDED; (below) LC. 396 (both) LC. 397 (both) LC. 398 (both) LC. 399 LC. 400 (both) LC. 401 LC. 402 *Battles and Leaders of the Civil War*. 403 GDED. 404 Reggie Lankford. 405 (both) LC. 406 (both) LC. 407 (both) GDED. 408 (both) LC. 409 410 LC. 411 LC. 412 Robin McDonald. 413 Wikipedia Commons. 415 LC. **CHAPTER SEVENTEEN:** 416-417 LC. 419 GDED. 419 LC. 420 LC. 421 (both) GSA. 423 (both) LC. 424 GSA. 425 (both) LC. 426 LC. 427 (above) LC; (below) GSA. 428 LC. 429 Wikipedia Commons. 430 *First Lessons in Georgia History*, 1898. 431 LC. 432 Robin McDonald. 433 LC. 434 (above) Reggie Lankford; AHS. 435 Reggie Lankford. 436 (above) Robin McDonald; (below) Reggie Lankford. 437 Reggie Lankford. 438 GSA. 439 LC. 440 GDED. 441 Reggie Lankford. **UNIT FIVE:** 444-445 Robin McDonald. 446 GSA. 447 Robin McDonald. **CHAPTER EIGHTEEN:** 448-449 Reggie Lankford. 451 LC. 452 (left, above and below) LC; (right) GSA. 453 GSA. 454 LC. 455 LC. 456 (both) GSA. 457 LC. 458 LC. 460 GSA. 461 LC. 462 LC. 463 NA. 464 (above) AHS; (below) LC. 465 LC. 466 LC. 467 (above) LC; (below) Robin McDonald. 469 LC. **CHAPTER NINETEEN:** 470-471 LC. 473 LC. 474 LC. 475 LC. 476 LC. 477 LC. 478 LC. 479 LC. 480 LC. 481 LC. 482 LC. 483 LC. 484 (above) GSA; (below) LC. 485 (above) LC; (below) AUSC. 486 AUSC. 487 Reggie Lankford. 488 LC. 489 AHS. 490 LC. 491 Robin McDonald. 492 GDED. 493 (both) LC. 495 LC. **CHAPTER TWENTY:** 496-497 LC. 499 Robin McDonald. 500 (above) GDED. 500-501 LC. 501 (above) GSA. 502 LC. 503 (above) LC; (below) GSA. 504 (all) Coca-Cola Company Archives. 505 Robin McDonald. 506 AHS. 507 LC. 508 Robin McDonald. 509 AHS. 510 LC. 511 LC. 512 LC. 513 (both) LC. 514 (below, both) GSA. 514-515 LC. 515 LC. 515 Reggie Lankford. 517 LC. **UNIT SIX:** 520-521 LC. 523 LC. **CHAPTER TWENTY-ONE:** 524-525 LC. 527 LC. 527 GDED. 528 LC. 529 (both) LC. 530 LC. 531 LC. 532 LC. 533 Frank Driggs Collection. 534 USDA. 535 GHS. 536 Robin McDonald. 537 (above) Coca-Cola Company Archives; (below) LC. 538 LC. 539 LC. 540 (both) LC. 541 Georgia-Pacific. 542 (both) Robin McDonald. 543 LC. **CHAPTER TWENTY-TWO:** 544-545 LC. 547 LC. 548 (both) LC. 549

LC. 550 AHS. 551 LC. 552 Reggie Lankford. 553 (above) GDED; (below) Reggie Lankford. 554 FDIC. 555 LC. 556 LC. 557 (both) LC. 559 LC. 560 LC. 561 GSA. 562 LC. 563 A/J&C. 564 (above) LC. 564-565 LC. 565 (above) LC. 566 LC. 567 (all) LC. **CHAPTER TWENTY-THREE:** 570-571 LC. 573 LC. 574 LC. 575 (both) LC. 576 (both) LC. 577. GSA. 578-579 LC. 580 LC. 581 LC. 582 GSA. 583 Georgia College & State University. 584 (below) LC. 584-585 AHS. 586 (both) LC. 587 (above) Coca-Cola Company Archives; (below) LC. 589 (above) LC.; (below) Reggie Lankford. 590 LC. 591 Special Collections & Archives, Georgia State University Library. 592 A/J&C. 593 GSA. 594 GSA. 595 LC. 596 LC. 597 Reggie Lankford. **UNIT SEVEN:** 600-601 Reggie Lankford. 603 Reggie Lankford. **CHAPTER TWENTY-FOUR:** 604-605 LC. 607 LC. 608 (below) LC. 608-609 LC. 609 LC. 610 (above) GDED; (below) Robin McDonald. 611 Reggie Lankford. 612 A/J&C. 613 A/J&C. 614 A/J&C. 615 Montgomery County Archives. 616 GSA. 617 Sam Holland, South Carolina State Capitol. 618 (both) GDED. 619 A. E. Jenkins Photography, Albany. 620 LC. 621 LC. 622 (above) LC; (below) A/J&C. 623 LC. 624 A/J&C. 625 A. E. Jenkins Photography, Albany. **CHAPTER TWENTY-FIVE:** 628-629 LC. 631 LC. 632 (both) A/J&C. 633 A/J&C. 634 GSA. 635 GSA. 636 GSA. 637 GSA. 638 (both) LC. 639 Callaway Gardens. 640 Reggie Lankford. 641 GSA. 642 Robin McDonald. 643 LC. 644 Office of the Governor. 645 University of West Georgia. **CHAPTER TWENTY-SIX:** 648-649 Reggie Lankford. 651 GDED. 653 (above) Robin McDonald; (below) GDED. 654 GDED. 655 Reggie Lankford. 656 GDED. 657 (both) GDED. 658 (both) GDED. 659 GDED. 660 GDED. 661 (both) GDED. 662 GDED. 663 GDED. 664 GDED. 665 GDED. 666 GDED. 667 GDED. 668 (both) GDED. 669 (above) Robin McDonald; (center and below) Reggie Lankford. 670 GDED. 671 GDED. 672 Jupiter Images. 673 Jupiter Images. 674 Jupiter Images. 675 Jupiter Images. **CHAPTER TWENTY-SEVEN:** 678-679 GDED. 681 (above) Robin McDonald; (below) Reggie Lankford. 682 GSA. 683 GSA. 684 (above) Robin McDonald; (below) A/J&C. 685 GSA. 686 Robin McDonald. 687 (above) Victor Diaz Lamich; (below) GDED. 688 (above) Joe Goldberg; (below) GDED. 689 University of North Carolina. 690 LC. 691 Joel Benjamin. 692 Georgia Museum of Art, University of Georgia; extended loan from the University of Georgia Foundation, gift of Mary and Lamar Dodd. 693 Reggie Lankford. 694 Steve Burns. 695 University of North Carolina. 696 Georgia College & State University. 697 (above) Wikipedia Commons; (below) Reggie Lankford.