

Appendix I

Oklahoma's Vital Statistics

POPULATION, 2010:

3,751,351 (28th most populous state)

Most populous county:

Oklahoma County, 718,633

Least populous county:

Cimarron County, 2,475

Largest Cities:

Oklahoma City, Tulsa, Norman, Broken Arrow, Lawton, Edmond, Moore, Midwest City, Enid, Stillwater

LOCATION:

Between 94° 29' and 103° west longitude
Between 33° 39' and 37° north latitude

LAND AREA:

69,903 square miles (18th largest state)

Largest county:

Osage County, 2,304 square miles

Smallest county:

Marshall County, 427 square miles

DISTANCES:

464 miles east to west
320 miles north to south

NUMBER OF LAND REGIONS: 10**LOCATION WITHIN UNITED STATES:**

South central

TIME ZONE: Central**GEOGRAPHIC CENTER OF THE STATE:**

In Oklahoma County, 8 miles north of Oklahoma City

BORDERING STATES:

Colorado, Kansas, Texas, Missouri, Arkansas, New Mexico

NUMBER OF COUNTIES: 77**AVERAGE ELEVATION:**

1,300 feet above sea level

Highest point:

Black Mesa, 4,973 feet above sea level

Lowest point:

Little River flood plain, 287 feet above sea level

HIGHEST TEMPERATURE:

120° Fahrenheit, on July 18, 1936, at Alva; on July 19, 1936, and August 12, 1936, at Altus, on August 12, 1936, at Poteau; on July 26, 1943, at Tishomingo; and on July 27, 1994, at Tipton

LOWEST TEMPERATURE:

-31° Fahrenheit, on February 10, 2011, at Nowata

ADMITTED TO UNION:

November 16, 1907 (46th state)

NICKNAMES:

The Sooner State, Boomer's Paradise

CAPITAL: Oklahoma City**OLDEST TOWN:** Vinita, 1871

Oklahoma's Symbols



AMPHIBIAN
Bullfrog
(adopted 1997)

ANIMAL
Bison
(1972)

ANTHEM
"Oklahoma!"
by Rodgers and Hammerstein
(1953)

BEVERAGE
Milk
(1985)

BIRD
Scissor-tailed flycatcher
(1951)



BUTTERFLY
Black swallowtail
(1996)

CARTOON CHARACTER
GUSTY
created by former
Tulsa weatherman
Don Woods
(2005)

CHILDREN'S SONG
"Oklahoma, My Native Land"
by Martha Kemm Barrett
(1996)

COLORS
Green and white
(1915)



COUNTRY AND WESTERN SONG
"Faded Love"
by John Willis and Bob Wills
(1988)

CRYSTAL
Hourglass selenite crystal
(2005)

FISH
White (or sand) bass
(1974)

FLORAL EMBLEM
Mistletoe
(1893)

FLOWER
Oklahoma rose
(2004)



FOLK DANCE

Square dance
(1988)

FOLK SONG

"Oklahoma Hills"
by Woody Guthrie and
Jack Guthrie
(2001)

FOSSIL

Saurophaganax maximus
(2000)

FUR-BEARING ANIMAL

Raccoon
(1989)

FRUIT

Strawberry
(2005)

GAME ANIMAL

White-tailed deer
(1989)

GAME BIRD

Wild turkey
(1989)

GRASS

Indian grass
(1972)



INSECT

Honeybee
(1992)

MOTTO

Labor Omnia Vincit
("Labor Conquers All Things")
(1893)

MUSICAL INSTRUMENT

Fiddle
(1984)

PERCUSSIVE MUSICAL INSTRUMENT

Drum
(1993)

POEM

"Howdy Folks"
by David Randolph Milsten
(1973)

REPTILE

Mountain boomer or collared
lizard (1969)

ROCK

Rose rock (Barite rose)
(1968)

ROCK SONG

"Do You Realize?"
The Flaming Lips
(2009)



SOIL

Port silt loam
(1987)

SONG

"Oklahoma!"
by Rodgers and Hammerstein
(1953)

THEATRE

Lynn Riggs Players of
Oklahoma, Inc.
(1961)

TREE

Redbud
(1937)

VEGETABLE

Watermelon
(2007)

WALTZ

"Oklahoma Wind"
by Dr. Dale J. Smith
(1982)

WESTERN BAND

The Sounds of the Southwest
(1997)

WILDFLOWER

Indian Blanket
(1986)

Oklahoma's Counties

COUNTY	YEAR FORMED	2010 POPULATION	COUNTY SEAT	NAMED FOR
Adair	1907	22,683	Stilwell	Cherokee Adair family
Alfalfa	1893	5,642	Cherokee	Governor William "Alfalfa Bill" Murray
Atoka	1907	14,182	Atoka	Choctaw leader Atoka
Beaver	1890	5,636	Beaver	Beaver River
Beckham	1907	22,119	Sayre	Kentucky Governor John C. W. Beckham
Blaine	1890	11,943	Watonga	U.S. Senator James Gillespie Blaine
Bryan	1907	42,416	Durant	William Jennings Bryan
Caddo	1901	29,600	Anadarko	Caddo tribe
Canadian	1889	115,541	El Reno	Canadian River
Carter	1907	47,557	Ardmore	Ben W. Carter, prominent early-day family
Cherokee	1907	46,987	Tahlequah	Cherokee tribe
Choctaw	1907	15,205	Hugo	Choctaw tribe
Cimarron	1907	2,475	Boise City	Cimarron River
Cleveland	1889	255,755	Norman	President Grover Cleveland
Coal	1907	5,925	Coalgate	The coal deposits in area
Comanche	1901	124,098	Lawton	Comanche tribe
Cotton	1912	6,193	Walters	Cotton grown in the area
Craig	1907	15,029	Vinita	Cherokee leader Granville Craig
Creek	1907	69,967	Sapulpa	Creek tribe
Custer	1892	27,469	Arapaho	General George Armstrong Custer
Delaware	1907	41,487	Jay	Delaware District of Cherokee Nation
Dewey	1892	4,810	Taloga	Admiral George Dewey
Ellis	1907	4,151	Arnett	Albert H. Ellis, member of constitutional convention

COUNTY	YEAR FORMED	2010 POPULATION	COUNTY SEAT	NAMED FOR
Garfield	1893	60,580	Enid	President James A. Garfield
Garvin	1907	27,576	Pauls Valley	Chickasaw leader Samuel Garvin
Grady	1907	52,431	Chickasha	Henry W. Grady of Georgia
Grant	1893	4,527	Medford	President U. S. Grant
Greer	1896	6,239	Mangum	Texas Lt. Governor John Greer
Harmon	1909	2,922	Hollis	Ohio Governor Judson Harmon
Harper	1893	3,685	Buffalo	Oscar G. Harper, clerk of constitutional convention
Haskell	1907	12,769	Stigler	Charles N. Haskell, member of constitutional convention and later governor
Hughes	1907	14,003	Holdenville	W. C. Hughes, member of constitutional convention
Jackson	1907	26,446	Altus	Confederate General Thomas (Stonewall) Jackson
Jefferson	1907	6,472	Waurika	President Thomas Jefferson
Johnston	1907	10,957	Tishomingo	Douglas H. Johnston, governor of Chickasaw Nation
Kay	1893	46,562	Newkirk	Originally county "K," changed to word Kay
Kingfisher	1890	15,034	Kingfisher	King Fisher, an early settler
Kiowa	1901	9,446	Hobart	Kiowa tribe
Latimer	1907	11,154	Wilburton	James S. Latimer, member of constitutional convention
Le Flore	1907	50,384	Poteau	Choctaw Le Flore family
Lincoln	1891	34,273	Chandler	President Abraham Lincoln
Logan	1890	41,848	Guthrie	General John Alexander Logan
Love	1907	9,423	Marietta	Overton Love, Chickasaw judge
Major	1907	7,527	Fairview	John C. Major, member of constitutional convention
Marshall	1907	15,840	Madill	Maiden name of mother of constitutional convention delegate
Mayes	1907	41,259	Pryor	Cherokee Chief Samuel H. Mayes's family
McClain	1907	34,506	Purcell	Charles M. McClain, member of constitutional convention
McCurtain	1907	33,151	Idabel	Choctaw McCurtain family
McIntosh	1907	20,252	Eufaula	Creek McIntosh family
Murray	1907	13,488	Sulphur	William "Alfalfa Bill" Murray, president of constitutional convention and later governor

COUNTY	YEAR FORMED	2010 POPULATION	COUNTY SEAT	NAMED FOR
Muskogee	1907	70,990	Muskogee	Muscogee Creek tribe
Noble	1893	11,561	Perry	U.S. Secretary of the Interior John W. Noble
Nowata	1907	10,536	Nowata	Delaware word for “welcome” or sign saying town had no water
Okfuskee	1907	12,191	Okemah	Creek town in Alabama
Oklahoma	1890	718,633	Oklahoma City	Choctaw words meaning “people” and “red”
Okmulgee	1907	40,069	Okmulgee	Creek word meaning “boiling water”
Osage	1907	47,472	Pawhuska	Osage Nation
Ottawa	1907	31,848	Miami	Ottawa tribe
Pawnee	1893	16,577	Pawnee	Skidi Pawnee tribe
Payne	1890	77,350	Stillwater	Boomer leader David L. Payne
Pittsburg	1907	45,837	McAlester	Pittsburgh, Pennsylvania
Pontotoc	1907	37,492	Ada	Pontotoc Creek in Chickasaw homeland in Mississippi
Pottawatomie	1891	69,442	Shawnee	Potawatomie tribe
Pushmataha	1907	11,572	Antlers	Choctaw Chief Pushmataha and Pushmataha District of Choctaw Nation
Roger Mills	1892	3,647	Cheyenne	U.S. Senator Roger Q. Mills of Texas
Rogers	1907	86,905	Claremore	Clement V. Rogers, member of constitutional convention
Seminole	1907	25,482	Wewoka	Seminole tribe
Sequoyah	1907	42,391	Sallisaw	Sequoyah, Cherokee who invented Cherokee syllabary
Stephens	1907	45,048	Duncan	Congressman John H. Stephens of Texas
Texas	1907	20,640	Guymon	U.S. state
Tillman	1907	7,992	Frederick	U.S. Senator Benjamin Tillman of South Carolina
Tulsa	1907	603,403	Tulsa	Tulsey Town, Alabama, an old Creek settlement
Wagoner	1907	73,085	Wagoner	Bailey P. Waggoner, railroad attorney
Washington	1907	50,976	Bartlesville	President George Washington
Washita	1892	11,629	Cordell	Washita River
Woods	1893	8,878	Alva	Sam Wood of Kansas
Woodward	1893	20,081	Woodward	B. W. Woodward of Santa Fe Railroad Company

Appendix IV

Oklahoma's Governors

TERRITORIAL GOVERNORS

GOVERNOR	POLITICAL PARTY	TERM OF OFFICE
George Washington Steele	Republican	1890-1891
Robert Martin	Republican	1891-1892
Abraham Jefferson Seay	Republican	1892-1893
William Cary Renfrow	Democrat	1893-1897
Cassius McDonald Barnes	Republican	1897-1901
William Miller Jenkins	Republican	1901
William C. Grimes	Republican	1901
Thompson Benton Ferguson	Republican	1901-1906
Frank Frantz	Republican	1906-1907

STATE GOVERNORS

GOVERNOR	POLITICAL PARTY	TERM OF OFFICE
Charles Nathaniel Haskell	Democrat	1907-1911
Lee Cruce	Democrat	1911-1915
Robert Lee Williams	Democrat	1915-1919

GOVERNOR	POLITICAL PARTY	TERM OF OFFICE
James Brooks Ayers Robertson	Democrat	1919-1923
Jack Callaway Walton	Democrat	1923
Martin Edwin Trapp	Democrat	1923-1927
Henry Simpson Johnston	Democrat	1927-1929
William Judson Holloway	Democrat	1929-1931
William Henry Murray	Democrat	1931-1935
Ernest Whitworth Marland	Democrat	1935-1939
Leon Chase Phillips	Democrat	1939-1943
Robert Samuel Kerr	Democrat	1943-1947
Roy Joseph Turner	Democrat	1947-1951
Johnston Murray	Democrat	1951-1955
Raymond Dancel Gary	Democrat	1955-1959
James Howard Edmondson	Democrat	1959-1963
Henry Louis Bellmon	Republican	1963-1967
Dewey Follett Bartlett	Republican	1967-1971
David Hall	Democrat	1971-1975
David Lyle Boren	Democrat	1975-1979
George Patterson Nigh	Democrat	1979-1987
Henry Louis Bellmon	Republican	1987-1991
David Lee Walters	Democrat	1991-1995
Francis Anthony Keating	Republican	1995-2003
Brad Henry	Democrat	2003-2011
Mary Fallin	Republican	2011-

Oklahoma's Federally Recognized Indian Tribes

TRIBE**TRIBAL HEADQUARTERS**

Absentee Shawnee Tribe	Shawnee
Alabama Quassarte Tribal Town	Wetumka
Apache Tribe	Anadarko
Caddo Nation	Binger
Cherokee Nation	Tahlequah
Cheyenne & Arapaho Tribes	Concho
Chickasaw Nation	Ada
Choctaw Nation	Durant
Citizen Potawatomi Nation	Shawnee
Comanche Nation	Lawton
Delaware Nation	Anadarko
Delaware Tribe of Indians	Bartlesville
Eastern Shawnee Tribe	Seneca, Missouri
Fort Sill Apache Tribe	Apache

TRIBE**TRIBAL HEADQUARTERS**

Iowa Tribe	Perkins
Kaw Nation	Kaw City
Kialegee Tribal Town	Wetumka
Kickapoo Tribe	McCloud
Kiowa Tribe	Carnegie
Miami Nation	Miami
Modoc Tribe	Miami
Muscogee (Creek) Nation	Okmulgee
Osage Nation	Pawhuska
Otoe-Missouria Tribe	Red Rock
Ottawa Tribe	Miami
Pawnee Nation	Pawnee
Peoria Tribe of Indians	Miami
Ponca Nation	Ponca City
Quapaw Tribe	Quapaw
Sac & Fox Nation	Stroud
Seminole Nation	Wewoka
Seneca-Cayuga Tribe	Miami
Shawnee Tribe	Miami
Thlopthlocco Tribal Town	Okemah
Tonkawa Tribe	Tonkawa
United Keetoowah Band of Cherokees	Tahlequah
Wichita & Affiliated Tribes	Anadarko
Wyandotte Nation	Wyandotte
Yuchi (Euclidean) Tribe of Indian (Historic Tribe that has filed for federal recognition)	Sapulpa

Appendix VI

Oklahoma's Colleges and Universities

SCHOOL	FOUNDED	CITY	TYPE
Bacone College	1880	Muskogee	Private
Cameron University	1908	Lawton, Duncan	Public
Carl Albert State College	1933	Poteau, Sallisaw	Community college
Connors State College	1908	Warner, Muskogee	Community college
East Central University	1909	Ada	Public
Eastern Oklahoma State College	1920	Wilburton, McAlester, Idabel	Community college
Family of Faith College	1992	Shawnee	Private
Hillsdale Free Will Baptist College	1959	Moore	Private
Langston University	1897	Langston, Oklahoma City, Tulsa	Public
Mid-America Christian University	1953	Oklahoma City	Private
Murray State College	1908	Tishomingo	Community college
Northeastern Oklahoma A&M College	1919	Miami	Public
Northeastern State University	1851	Tahlequah, Broken Arrow, Muskogee	Public
Northern Oklahoma College	1901	Tonkawa, Enid, Stillwater	Community college
Northwestern Oklahoma State University	1897	Alva, Enid, Woodward	Public

SCHOOL	FOUNDED	CITY	TYPE
Oklahoma Baptist University	1906	Shawnee	Private
Oklahoma Christian University	1950	Oklahoma City	Private
Oklahoma City Community College	1970	Oklahoma City	Community college
Oklahoma City University	1904	Oklahoma City	Private
Oklahoma Panhandle State University	1909	Goodwell	Public
Oklahoma State University	1890	Stillwater, Tulsa, Oklahoma City, Okmulgee	Public
Oklahoma Wesleyan University	1909	Bartlesville	Private
Oral Roberts University	1963	Tulsa	Private
Phillips Theological Seminary	1906	Tulsa	Private
Redlands Community College	1938	El Reno	Community college
Rogers State University	1909	Claremore, Bartlesville, Pryor	Public
Rose State College	1970	Midwest City	Community college
St. Gregory's University	1875	Shawnee	Private
Seminole State College	1931	Seminole	Community college
Southeastern Oklahoma State University	1909	Durant, Idabel	Public
Southern Nazarene University	1899	Bethany	Private
Southwestern Christian University	1946	Bethany	Private
Southwestern Oklahoma State University	1901	Weatherford, Sayre	Public
Tulsa Community College	1968	Tulsa	Community college
University of Central Oklahoma	1890	Edmond	Public
University of Oklahoma	1890	Norman, Tulsa	Public
University of Science & Arts of Oklahoma	1908	Chickasha	Public
University of Tulsa	1894	Tulsa	Private
Western Oklahoma State College	1926	Altus	Community college

An Atlas of Oklahoma



Oklahoma in the World



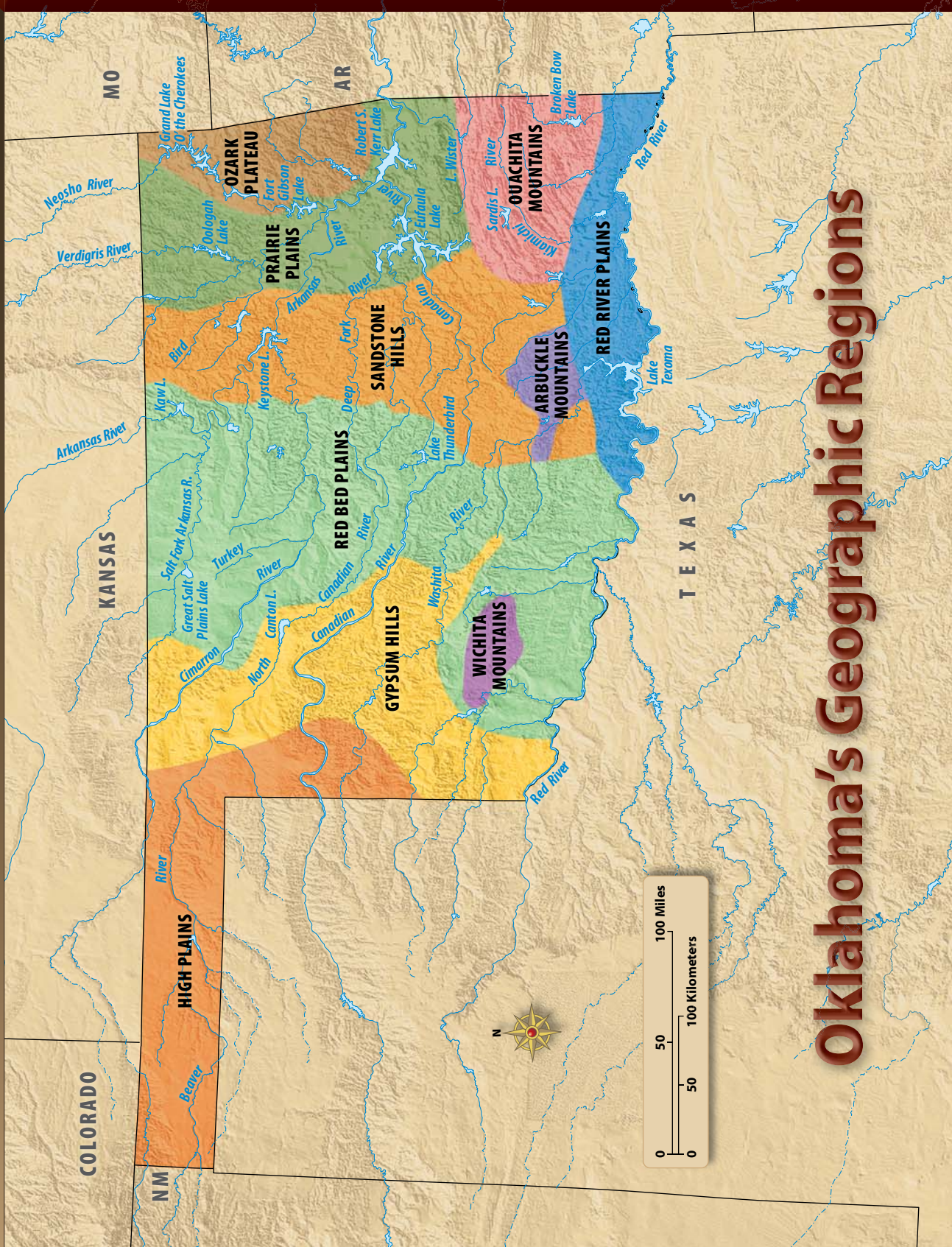
An Atlas of Oklahoma



Oklahoma in the United States



An Atlas of Oklahoma



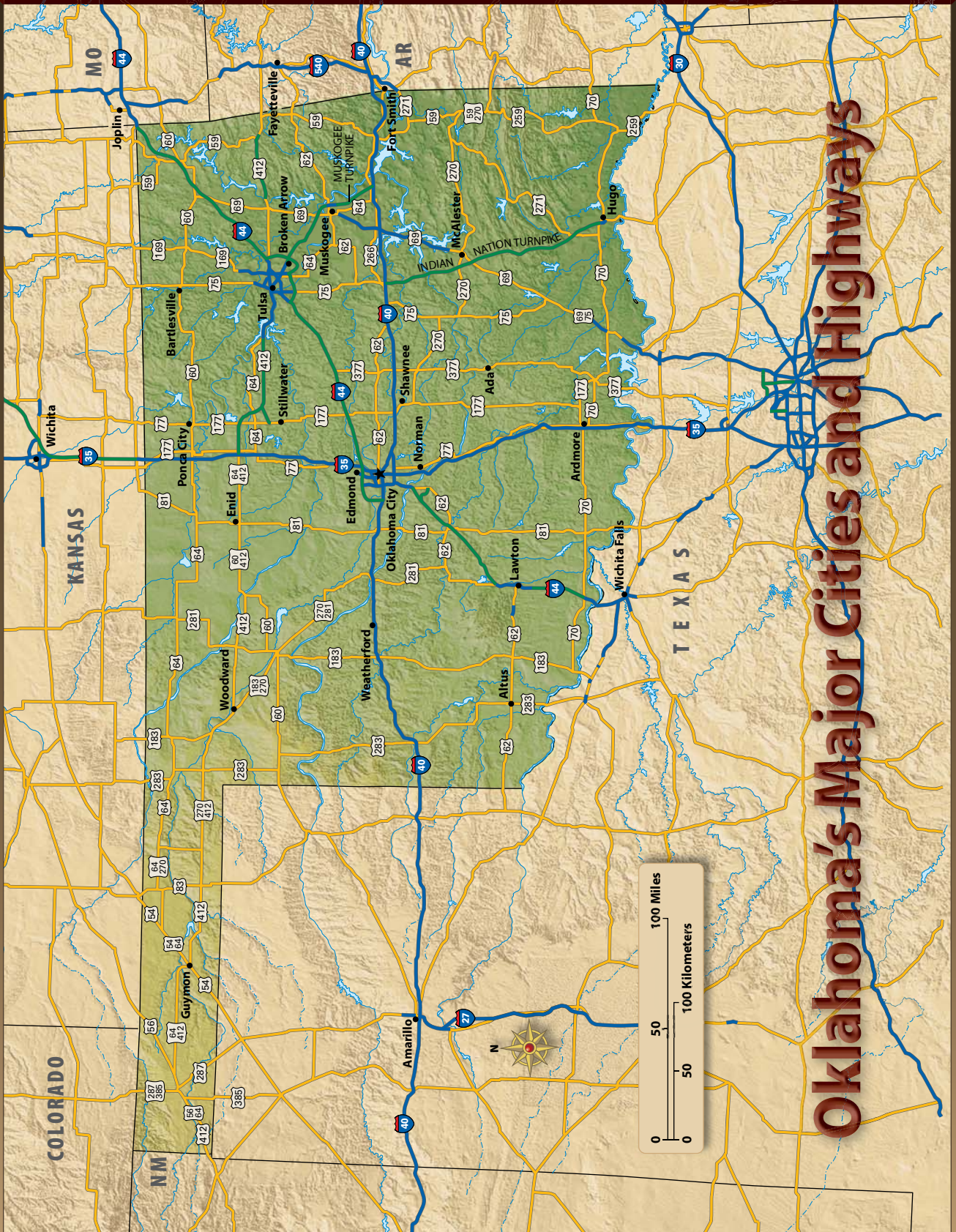
Oklahoma's Geographic Regions

An Atlas of Oklahoma



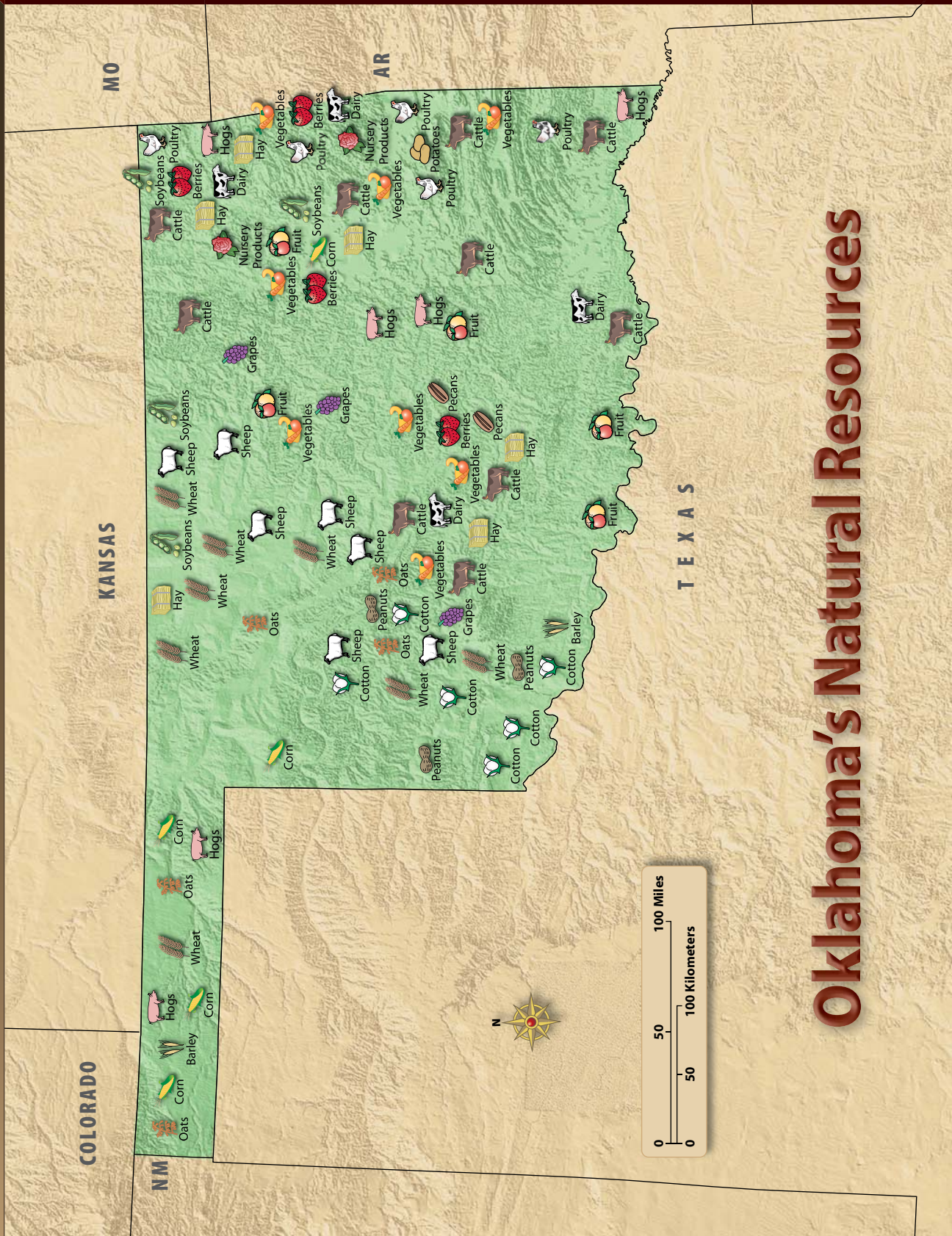
Oklahoma's Rivers and Lakes

An Atlas of Oklahoma



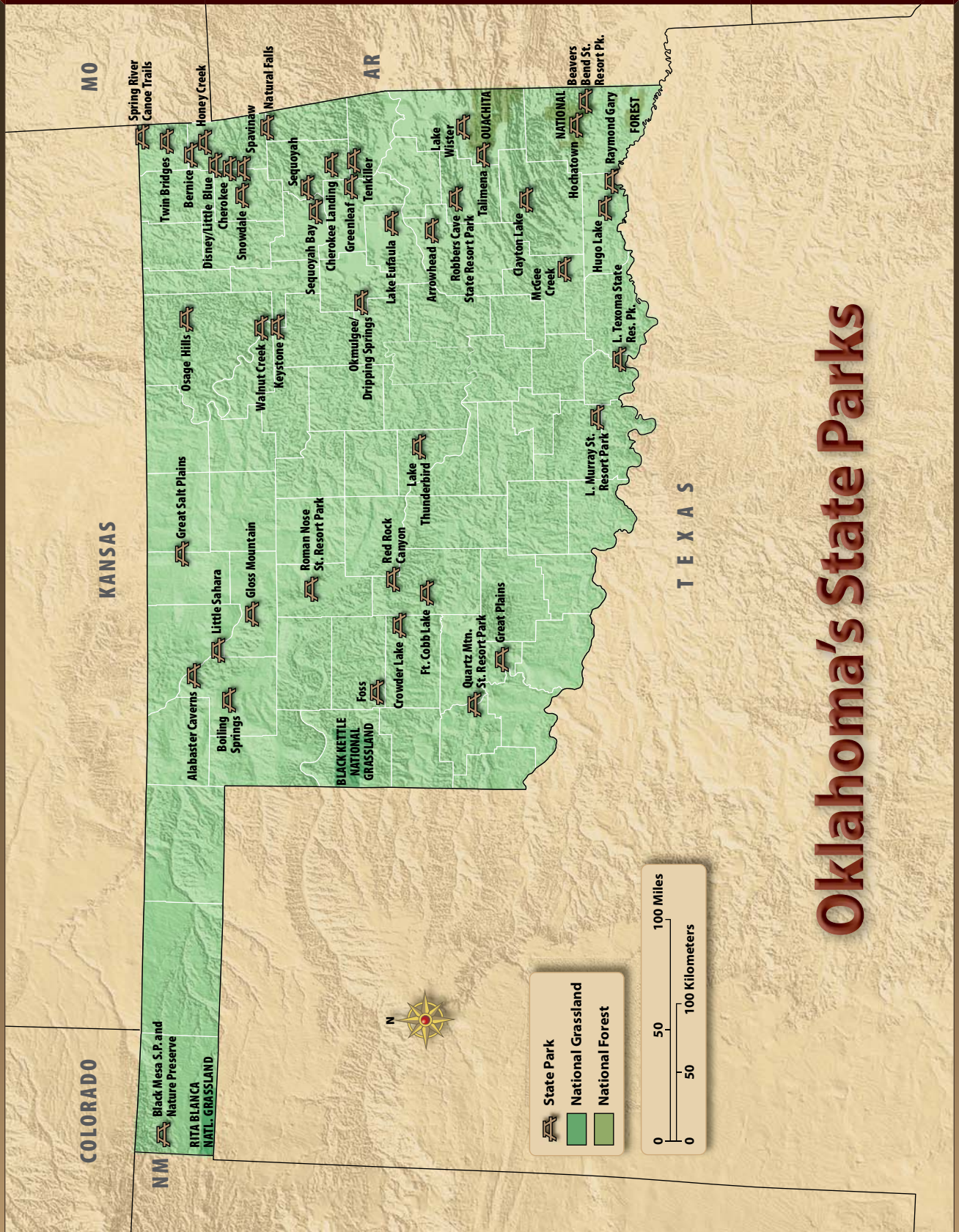
Oklahoma's Major Cities and Highways

An Atlas of Oklahoma



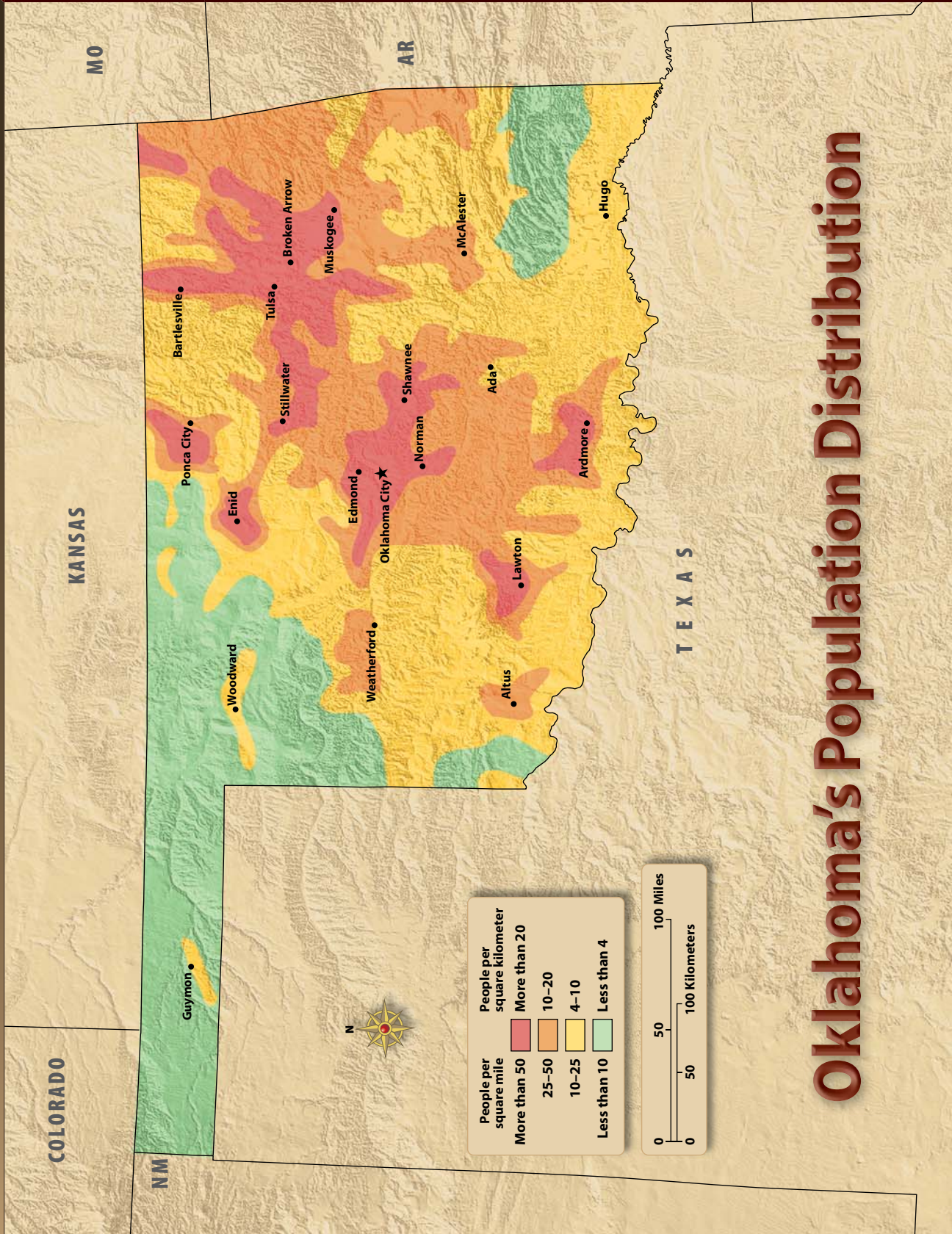
Oklahoma's Natural Resources

An Atlas of Oklahoma



Oklahoma's State Parks

An Atlas of Oklahoma



Oklahoma's Population Distribution

Glossary

A

- abolitionist** one who was against slavery (8)
- academy** a school similar to a high school of today (6)
- ad valorem taxes** taxes that are based on the value of the item being taxed (19)
- affirmative action** programs designed to increase the number of minorities in the workplace (16)
- alliance** a close association to advance the common interests of the parties (3)
- allotment** a specified portion, as of land (5)
- amendment** an addition to a document, such as a constitution (12)
- American Indian Movement (AIM)** a militant American Indian organization organized in the late 1960s to gain Indian rights (16)
- annex** to add on, such as adding territory to an existing town, city, or state (7)
- annuity** a sum of money paid annually or at some other regular interval (6)
- anthropologist** a scientist who studies artifacts, fossils, cave drawings, trails, and oral history to learn the culture of a group and how groups of people lived (2)
- appropriate** to set aside a certain amount of money for a specific purpose (4)
- aquifer** an underground basin that holds water that seeps down from rainfall, lakes, and ponds (1)
- Arbuckle Mountains** a geographic region in the south-central part of the state (1)
- archaeologist** a scientist who studies ancient cultures by examining what they have left behind (2)
- armistice** a temporary stop to fighting (13)
- artifact** an item made or used by people; includes pottery, tools, bone, jewelry, and paintings (2)
- assimilation** the process of one group becoming part of another (5)
- atlatl** a short wooden shaft with a hook at the end that was used to throw darts with more force and accuracy (2)

B

- baby boomer** name given to a child born between the years 1946 and 1964 (15)
- barnstormer** a pilot who gave airplane rides and flying and stunt exhibitions (14)
- barter** to trade one item for another (2)
- basin** a deep sunken area (1)
- bicameral** a legislature that has two houses; in Oklahoma, the Legislature consists of a senate and a house of representatives (12)
- bill** a proposed law (19)
- biomass** renewable plant materials and animal waste (17)
- boll weevil** an insect that attacks the boll of the cotton plant (12)
- boomer** one who took part in the land "booms" of the late 1800s when western land was opened to settlement (11)
- boycott** occurs when people refuse to buy certain items or take certain actions until specific conditions are met (16)
- budget** a plan for receiving and spending money (19)
- buffalo soldiers** the name given to the black troops of the 10th Cavalry by the Native Americans (9)
- buffer zone** a neutral area between two larger areas with different uses (7)
- butte** an isolated hill or mountain with steep sides; smaller than a mesa (1)

C

- calumet** a long ceremonial pipe used by the Native Americans (3)
- caravan** a procession of wagons traveling in single file (7)
- cartographer** a mapmaker (3)
- cede** to turn over, often by treaty (5)
- charter** official permission to operate (12)
- civil law** law that involves situations where people

have been harmed and some kind of financial award can help resolve the problem (19)

Civil Rights Act of 1964 federal legislation that required equal employment opportunity without regard to race, religion, and national origin (16)

climate the average weather of an area over a long period of time, such as 25-30 years (1)

Cold War name given to the period of hostilities after World War II between the United States and the Soviet Union (15)

collective bargaining negotiations between a labor union and an employer over wages, benefits, and working conditions (14)

colony a group of people who settle in another land but who are still under the rule of their native land (3)

Compromise of 1850 legislation by which California was admitted as a free state, the Texas-New Mexico boundary was settled, the northern boundary of the Texas Panhandle was set at 36°30' N latitude, the slave trade was banned in the District of Columbia, the fugitive slave law was strengthened, and the territories of New Mexico and Utah were organized without mention of slavery (8)

confederacy an alliance (4)

Confederate States of America the government formed by those southern states that seceded from the Union in 1861 (8)

conquistador a Spanish conqueror (3)

constitution a document that sets up the framework of a government (or any other organization) (4)

contract a formal, legally binding agreement between two or more parties (7)

cooperative an organization owned by and operated for those using its services (13)

council of defense a state organization during World War I to coordinate publicity, food and fuel conservation, military preparedness, and campaigns for Liberty Bonds and war savings stamps (13)

county seat the city or town where the county government is located (19)

credit the ability to buy goods now and pay for the items over a period of time (14)

criminal law law that involves investigating crimes, prosecuting defendants, and holding perpetrators accountable for their actions; persons found guilty

of criminal offenses usually receive jail or probationary sentences (19)

culture the way of life of a group of people; includes beliefs, traditions, music, art, and social institutions (18)

Curtis Act federal legislation that abolished tribal courts and made everyone in Indian Territory subject to federal law and the laws of Arkansas; forced the tribes to allot land or risk abolishment of tribal governments (11)

D

Dawes Severalty Act federal legislation that dissolved tribal ownership of land, primarily in western Oklahoma, and gave specific amounts of land to each individual Indian; it also extended the protection of U.S. laws over the Indians (11)

deregulation the removal of government rules and regulations (16)

desperado a bold outlaw, especially in the western United States (6)

destitute suffering in extreme poverty (6)

dictator a ruler with complete control (15)

dissenter one who is in disagreement or opposition (13)

diversity a variety of different ideas, customs, skills, arts, foods, and beliefs (18)

draft compulsory enrollment for military service (13)

drought a long period without rainfall (1)

drover a trail driver (10)

dugout a house built half in the ground, half above (9)

Dust Bowl an area hard hit by a drought in the 1930s; included the western half of Kansas, southeastern Colorado, the Oklahoma Panhandle, the northern two-thirds of the Texas Panhandle, and northeastern New Mexico (14)

E

economy a system that includes all the activities involved in the production, distribution, and consumption of goods and services (3)

ecosystem an interacting system of living organisms—plants, trees, animals, fish, and so on—and their nonliving environment (1)

elevation the height of a place above sea level (1)

embargo an action stopping all trade with a particular country (16)

emigrant one who leaves one's country to settle in another (6)

Enabling Act federal legislation, signed June 16, 1906, that provided for joining Indian Territory and Oklahoma Territory into the single state of Oklahoma, also called the Hamilton Statehood Bill (12)

encroachment a trespass or an intrusion without permission (4)

environment surroundings (1)

epidemic an outbreak of a contagious disease (4)

erosion the wearing away of land by the action of wind or water (1)

ethnic group a group of people who share common traditions, beliefs, and patterns of living that can include language, religion, customs, characteristics, history, and food (18)

expedition a journey for a specific purpose, such as exploration (3)

F

fossil fuel a fuel formed in the ground from the remains of dead plants and animals; includes oil, natural gas, and coal (1)

fossil a trace or remains of living things (2)

free state a state that did not allow slavery (8)

freedmen former slaves (9)

frontier the area at the edge or just beyond a settled area (4)

G

garrison a military post (9)

geography the study of Earth's physical features and how people interact with them (1)

gerrymandering the process of redrawing voting districts to give an unfair advantage to one political party (13)

governor the head of the executive branch of state government (12)

grandfather clause a clause that, to register to vote, required a person to prove he could read and write parts of the state constitution or was a descendant of a person who was eligible to vote on January 1, 1866; this clause virtually denied blacks the right to vote (13)

Great Depression a period of time in the 1930s when the United States and much of the world suffered under a severe economic downturn (14)

guardianship a situation where someone legally has the authority to make decisions for and care for and control all of the property of someone (8)

guerrilla a member of a small military group that harasses the enemy (8)

Gypsum Hills a geographic region in the western part of the state that covers a large area from the Kansas border to the far southwestern corner of the state (1)

H

headright an interest reserved for each tribal member in the funds collected from mineral leases, sale of lands, etc. (13)

High Plains a geographic region of the state that includes the Panhandle and land along part of the western border of the state (1)

Homestead Act of 1862 federal legislation that enabled citizens to acquire up to 160 acres of land by paying a filing fee, occupying the land for five years, and building a home and improvements (9)

human rights rights believed to belong to all people (6)

I

immigrant one who moves to a new country to settle there (7)

immunity resistance (3)

impeachment the process of charging a public official with wrongdoing while that official is still in office (13)

impressment forcing U.S. sailors to serve in the British navy (5)

Indian Removal Act legislation passed in 1830 that forced the Indian tribes living east of the Mississippi River to move onto land west of the Mississippi (5)

indict to charge with a crime (14)

inflation an increase in the prices of goods and services, while purchasing power decreases (14)

initiative a political process where citizens can propose a law or constitutional amendment (12)

interurban a short railroad or electric trolley (12)

irrigation supplying water to land by artificial means (1)

isthmus a narrow strip of land connecting two larger land areas (3)

J

Jim Crow laws laws that limited the rights of black people (12)

jurisdiction the range of actions over which a court has control or influence (10)

K

kickback a bribe or illegal payment made to obtain business or help of some kind (17)

Ku Klux Klan a secret, racist organization that sought to keep political power in the hands of whites by using violence and intimidation; its members were anti-Catholic, anti-Jewish, anti-African American, and opposed to immigration and labor unions (14)

L

latitude the distance north or south of the equator measured in degrees (1)

lighthorseman a tribal policeman (10)

literacy the ability to read and write (6)

long hunter a hunter gone for long periods of time (4)

longitude the distance east or west of the prime meridian measured in degrees (1)

lottery a contest whose winner is chosen by a drawing (5)

M

manifest destiny Americans' desire to gain new land and to spread their beliefs and idealism (4)

MAPS (Metropolitan Area Projects) a capital improvement program begun in 1993 to revitalize downtown Oklahoma City (17)

martial law a temporary use of military rule when civilian authority breaks down (14)

mesa a large flat-topped but steep-sided landform (1)

middleman a trader who buys goods from producers and sells them to other traders or consumers (3)

migrate to move from one place to another (5)

minority a group of people who are a small part of a much larger group (6)

mission a building or compound belonging to a group sent out to do religious or charitable work (6)

missionary one who is sent on a religious mission (3)

Missouri Compromise an 1820 compromise by which Missouri was admitted as a slave state, Maine was admitted as a free state, and slavery was prohibited north of Missouri's southern border at 36° 30' N latitude (5)

N

nanotechnology the manipulation of atoms and molecules to create new structures, devices, and systems (17)

natural resources those things found in nature that are useful to humans (1)

negotiations discussions between people who try to come to an agreement on something (6)

neutral to not take sides in a disagreement (8)

New Deal the name given to the series of laws passed during President Franklin D. Roosevelt's terms that were intended to deal with the conditions caused by the Great Depression (14)

nomadic wandering from place to place (2)

normal school a teacher-training institution (11)

Northwest Passage a hoped-for all-water route to Asia through the North American continent (3)

O

ordinance a local law (13)

Organic Act federal legislation, signed May 2, 1890, that created Oklahoma Territory from western Indian Territory and No Man's Land (11)

Organization of the Petroleum Exporting Countries (OPEC) an organization founded in 1960 of several petroleum-producing countries to gain control over oil production and pricing (16)

Ouachita Mountains a geographic region in the southeastern part of the state (1)

Ozark Plateau a geographic region in the northeastern part of the state (1)

P

Pacific Railroad Act federal legislation passed in 1862 authorizing the construction of a railroad and a telegraph line across the country (9)

pandemic something that occurs over a wide geographic area; was used to refer to the worldwide influenza epidemic of the late 1910s (13)

partisan describes strong, biased political backing (14)

peacekeeping mission the activity of keeping the peace by military forces (6)

petrochemicals chemicals derived from petroleum or natural gas (14)

petroglyph a picture or symbol that conveys an idea (2)

pirogue a canoe-shaped boat (4)

plateau an elevated, relatively level area (1)

polygamy having more than one wife (2)

popular sovereignty a process by which those living in a territory could decide for themselves on an issue, such as if they wanted slavery (8)

powwow an American Indian gathering to celebrate Indian heritage; often includes singing and dancing (18)

Prairie Plains a geographic region of the state to the west of the Ozark Plateau (1)

prehistoric people those who lived before recorded history (2)

price parity the point where prices received for farm products keep pace with the costs of other products and services to ensure a constant standard of living (16)

progressive movement a movement in the early 1900s that believed government was best equipped to correct the problems in society (12)

prohibition forbidding by law the making or selling of alcoholic beverages (12)

protégé a young person who receives experienced guidance (4)

protohistoric refers to the era between prehistoric and recorded history (2)

Q

quarantine a restriction of people's or animals' movement to stop the spread of disease (10)

R

railhead the end of a railroad line (10)

rapprochement relationship (9)

ratify to formally approve something, such as a treaty (4)

ration to limit the supply of something (15)

Reconstruction the process of rebuilding the country after the Civil War (9)

Red Bed Plains a geographic region in the middle

of the state that extends from Kansas to Texas (1)

Red River Plains a geographic region in the southeastern part of the state that lies along the Red River (1)

referendum a procedure whereby citizens are able to vote on a law that affects them before that law goes into effect (12)

renegade a deserter (4) or an outlaw (9)

reservation an area set aside for use by a particular people (9)

reserves supplies that are known, but not yet produced (17)

rider an addition (11)

rodeo a competition among cowboys that usually includes roping, bronco riding, calf roping, and steer wrestling (18)

royalty a payment for the right to exploit a natural resource (10)

S

Sandstone Hills a geographic region of the state just east of the Red Bed Plains region (1)

secede to break away, as a state breaking away from the Union (8)

segregation separating groups by race (10)

seminary a residential school (10)

shaman a wise medicine man (2)

shelterbelt a row of trees planted to anchor the soil and buffer the wind (14)

sit-in a type of demonstration that occurs when a group of people enter a public facility and refuse to leave until they are recognized or their demands are met (15)

skirmish a minor, short-term fight (3)

slave state a state that did permit slavery (8)

sooner one who crossed the starting line of a land run before the appointed time (11)

squatter one who settles on unoccupied land in order to gain title to it (11)

states' rights the principle that the rights and responsibilities of the states should take precedence over the rights and responsibilities of the federal government (8)

station a regular stopping place along a stagecoach line (7)

stock market the place where shares of ownership—stock—in corporations are bought and sold (14)

strike a work action that occurs when workers refuse to work until their demands are met (10)

subscription school an early school where parents paid a monthly fee, usually ranging from \$1 to \$2 (12)

subsidy a sum of money paid by the government to individuals, companies, or other groups needing help (14)

subsistence the minimum resources needed to support life (5)

suburbs a residential area on the edge of a city (15)

suffrage the right to vote (12)

survey to make a detailed map of an area, including its boundaries and elevation (6)

syllabary a group of symbols that stand for whole syllables (5)

T

tariff a tax, often on imported goods (8)

tax an amount charged citizens and businesses by their governments—federal, state, local—to pay for services provided (13)

tenant farmer a farmer who cleared the land and planted a crop, but who did not own the land (10)

terrorism acts of violence aimed at demoralizing or intimidating others (17)

Title IX an amendment to the Civil Rights Act of 1964 that stated that any educational institution receiving federal funding was required to provide equal opportunities in educational programs and activities (16)

topography physical features of the land, such as mountains or plateaus (1)

tornado a severe windstorm caused when clashing air masses create funnels of winds that rotate counterclockwise (1)

totem an animal or bird whose spirit guided a Native American (2)

township an area consisting of 36 one-mile-square parcels of land called *sections*; each section contains 640 acres of land (11)

transcontinental railroad a railroad that spans the continent from ocean to ocean (7)

treaty a formal agreement between two or more nations (4)

tributary a stream or river that flows into a larger river (1)

U

Underground Railroad a secret network of safe places for slaves to hide as they escaped to the North or Canada (8)

urban sprawl the unplanned, uncontrolled spread of urban development into areas on the edge of a city (17)

V

veto to not approve or sign a bill into law (19)

viceroy a Spanish governor (2)

W

weather a measure of the current conditions of the atmosphere; includes temperature, precipitation, and wind (1)

Wichita Mountains a geographic region in the middle of the state south of the Red Bed Plains (1)

wildcatter an oil-industry risk taker; one who drills in a doubtful or untapped area (1)

Index

The purpose of the index is to help you locate information quickly. The index contains references to not only text, but also illustrations and maps. A page number with **m** before it indicates a map; a page number with **f** before it indicates a chart or graph; a page number with **p** before it indicates a photograph or illustration.

A

- Abert, James, 175, 179
abolitionists, 193, 194
Absentee Shawnee Indians, 121, 231
academies, Indian, 148
Ada, 17, 326
Adair, William Penn, 216
Adams-Onís Treaty, 106-107
ad valorem taxes, 507, 509
affirmative action, 416
Afghanistan, 449
African-Americans, 280, 314, 484. *See also* blacks, segregation, slavery, slaves.
Afton, 51, **p**51
agencies, Indian, 223, 228
agriculture, 19, 22, 23, 357, 455-456
 and climate, 32-33
 crops grown, 302, 303, 357, 422, 455
 Dust Bowl, 370
 grape and wine industry, 455
 and Made in Oklahoma Coalition, 455-456
 and New Deal programs, 368
 in postwar periods, 353
 and tenancy system, 242, 368, 371
agriculture, secretary of, 495
Agriculture Adjustment Act, 368
AIM, 418
airports, 357-358, 360
Alabaster Caverns, 8, **p**8, 11
Albert, Carl, 401, **p**401
Albert Pike Association, 340
alcohol, 259, 310, 313. *See also* prohibition.
Alderson, 256
Alfalfa County, 105
Alfred P. Murrah Federal Building, 443-445
All-American Rejects, 457, 459
Allen, Royal, 311
alliance, 80
allotments, land, 134, 263, 270
al-Qaida, 449
Altus, 396
Altus Air Force Base, 386, 451-452
Altus Junior College, 426
Alva, 14, 288, 325, 388
amendment, 313
amendments to U.S. Constitution
 13th Amendment, 216
 14th Amendment, 216, 412
 15th Amendment, 216, 332
 18th Amendment, 345
 19th Amendment, 345
 26th Amendment, 416
American Indians, 417-418, 458-459. *See also* Indians, specific tribes.
American Indian Cultural Center and Museum, 477
American Indian Movement (AIM), 418
American Indian Self-Determination and Education Act, 418
American Revolution, 97-98, **p**97, **p**98
amusements, 305, 396
Anadarko, 228, 289, 469, 476
Anadarko Basin, 9, 421
Anadarko Indians, 165
annex, 173
annuities, 158
annuity goods, 226
Antelope Hills, 10
anthropologist, 43
Anti-Saloon League, 313
antislavery movement, 194
Antlers, 21, 396, 472

Apache Indians, 55, 56, **p**56, 57, 59, 94, 289, 290
appropriate, 102
aquifers, 28, **m**28
Arapaho Indian Boarding School, 227
Arapaho Indians, 219, 220, 223, 227, 228, 259, 285
Arbuckle, Colonel Matthew, 123, 124
Arbuckle Mountains region, 18, **p**18
archaeologists, 42, 43
Archaic Indian culture, 48-49, **p**48
Ardmore, 18, 361, 423
Arkansas Cherokee Indians, 160
Arkansas River, 19, 29, 31, 103, 105, 106, 110, 111, 424-425
Arkansas Territory, 120
Arkoma Basin, 9, 26
armistice, 345
Armstrong Academy, 154
Arnett, 10
artifacts, 42, 43
Asah, Spencer, 369
Asbury Manual Training School, 157
Asian settlers, 486
Asp, Henry, 311
assessor, county, 507
assimilation policy, 126
Atkins, Hannah, 416
Atlantic and Pacific Railway Company, 255
atlatl, 49, **p**49
Atoka, 17, 335, 339
Atoka Agreement, 271
attorney general, state, 494, 497
Auchiah, James, 369
auditor and inspector, state, 494, 497
Audubon, John James, **p**84
Augusta, Congress of, 96
Autograph Rock, 109, 178
automobile, 339, 360-361
Autry, Gene, 459
Avant, 339
Avery, Cyrus, 340, 360
aviation industry, 357-358, 359, 360, 452
Axton, Mae Boren, 395
Aydelotte, James Monroe, 342

B

baby boomers, 393-394, 419
Balliet's, 373

banks and banking, 325, 364, 365, 367, 438
Barker family, 373
Barnard, Kate, 329, **p**329
Barnes, Cassius M., 288
Barnitz, Albert, 223
barnstormers, 357
Barresi, Janet, **p**451
Barrow, Clyde, 373, **p**373
barter, 57, 82
Bartlesville, 19, 26, 335, **p**336, 337, 339, 439
Bartlett, Dewey, 410, 415
basins, 9
Bass, Wanda, 461
Battle of Twin Villages, 59, 94
Bayless, Rick, 460, **p**460
Beal, Mattie, 291, **p**291
Beaver, 10, 339
Beaver City, 282, 283
Beaver County, 52, 282, 284
Beaver Dunes State Park, 10
Beaver River, 30
Beavers Bend State Park, 21, 368
Beckham County, 11, 283
Becknell, William, 109, 178
Belle Isle Park and Lake, 305
Bellmon, Henry Louis, 410, 440-441, 496
Bemo, John Douglas, 164, **p**165
Bench, Johnny, 429, **p**443, 457
Benson Park, 305
Beringia, 44
Bering land bridge, 44
Bernhardt, William, 460
Berning, Susie Maxwell, 429
Berry, Jennifer, 457, 459
Bethany, 374
bicameral (legislature), 312
Bigfoot Festival, 474
Big Pasture, 289, 290
bill, 499-500
bill of rights, 313
biomass, 454
birds, migratory, 12
bison, 47, 48, 150-151
Black Beaver, 183
Black Kettle, 219, 222, 223, 224
Black Kettle National Grasslands, 10
Black Mesa, 9, 10, **p**10

blacks,
 and civil rights movement, 393
 in Civil War, 204, 205
 discrimination against, 314, 326-327
 and grandfather clause, 328
 and land runs, 280
 and segregation, 244-245, 314, 326-327, 398
 and suffrage, 328, 332
 and towns, 244-245
 Tulsa race riot, 354-355.
See also slavery, slaves.

Blackwell, **p**298

Blaine County, 27, 286, 306

Bloomfield Academy, 159

Blue Ribbon Downs, 438

Blue River, **p**30, 31

Blunt, James G., 203, 204, **p**204, 205, 206

boards, state, 312

Boggy Depot, 158, 179, 184, 250

Boggy River, 31

Bohanon, Luther, 412

Boiling Springs State Park, 11, 368, 472, **p**472

Boise City, 10, 387

boll weevil, 303

Bonaparte, Napoleon, 100

boomers, 273-281

Boone, Nathan, 148

Booneville, Benjamin, 174-175

Boren, David L., 419-420, **p**419, 437

Boudinot, Elias, 135, 136

Boudinot, Elias C., 216, 273, **p**273

Bougie, Charles, 107

Bowlegs, Billy, 164, 240

boycott, 411

Boyd Springs, 257

Bradford, Major William, 106-107

branches of state government, 312, 494-503

Braniff, Thomas and Paul, 358

Braum's Ice Cream and Dairy, **p**426, 427

Bricktown, 300, 442, **p**442

bridges, 184

Bristow, 361

British settlers, 484

Broken Arrow, 19, 326

Broken Bow, 21

Brooks, Garth, 457, 459, **p**459

Brooks & Dunn, 459

Brown, Elijah, 240

Brown, John F., 163, 216, 240, 309

Brown v. Board of Education of Topeka, 411, 412

Bryson Paddock site, 57

budget, 495

buffalo, 16, 17, 54, 150-151, 228, 254. *See also*
 bison.

Buffalo Soldier Monument, 457

buffalo soldiers, 224, 484

buffalo wallows, 151

buffer zone, 173

Burbank field, 355

Bureau of Indian Affairs, 132, 458

Burke, Bob, 460

Burney Institute, 159, 241

Burnham site, 45

Burns, Greg, 460

Busey, Gary, 459

business, 314, 426-427. *See also* economy.

busing, 412

Butler, Elizar, 161

butte, 11

Butterfield Overland Mail, 183-185, **p**184, 254

Byington, Reverend Cyrus, 85, 154, **p**154

Byrd, Edward, 335

C

Cabin Creek, Battle of, 204-205

Cabot, John, 71

Caddo County, 289, 371

Caddo Indians, 57, **p**57, 121, 122, 165, 198, 218-219, 289

Calf Creek culture, 49

California Road, 179-180

calumet, **p**80, 84

Cameron State, 326

Camp Doniphan, 342

Camp Gruber, 386

Camp Mason, 147

Camp Radzimirski, 148

Camp Supply, 222, 223. *See also* Fort Supply.

Canadian County, 273, 282, 285, 289

Canadian River, 31, 81, 106, 110

Cannon, Rufus, 261

Canton Lake, 11

capital, state,
 Guthrie, 285, 310, 329-330

Oklahoma City, 329-330
 Capitol, State, 14, 27, **p**27, **p**320-321, 330-331, 332, 356, 480, 504-505, **p**504, **p**505
 caravan, 179
 carbon dating, of artifacts, 43
 Cardin, 422
 Carnegie, 361
 Carson, Christopher (Kit), 219, **p**219, 220
 Carter, Charles D., 315
 Carter County, 26
 cartographer, 72
 Catawba Indians, 96, 165
 Catlin, George, **p**83, **p**131, **p**137, 147, **p**147
 Catoosa, Port of, 19, 425
 cattle,
 drives, 246-247
 grazing lands for, 247
 longhorn, 246, **p**246
 railheads for, 246
 trails, 250-251, **m**250
 caves, 11, 21
 Cayuga Indians, 138
 cede, 122
Celebrate Freedom Week, 500
 Centennial Celebration, 457, **p**457
 Centennial Stories, 457
 Chandler, 285
 Chaney, Lon, 459
 Chapman, Harry, 336
 charter, 314
 Checote, Samuel, 242, 243
 Chelsea, 335
 Chenoweth, Kristen, 459
Cherokee Advocate, The, 162
 Cherokee (Jerome) Commission, 285
 Cherokee Indians, 96, 98, 104, 458
 and allotments, 272
 Capitol, **p**236-237
 in Civil War, 198, 204
 constitution of, 128, 136, 160
 Eastern Band of, 135, 160, 161
 and education, 161, 162, 244
 and freedmen, 244
 government of, 128, 135, 160, 272
 in Indian Territory, 160-163, 243-244
 and land leasing, 258
 and law enforcement, 259

national seminaries, 244
 newspaper, 128, 135
 removal of, 135-136
 in Southeast, 127, 128, 135
 syllabary, 128, 129
 Trail of Tears, 135-136
 treaties with, 135, 216
 Western, 123, 124, 125, 136, 160, 161.
See also Indians.
 Cherokee Outlet, 125, 216, 255, 258, 274, 276, 286
Cherokee Phoenix, 128, **p**128, 135
 Cherokee Strip, *see* Cherokee Outlet.
 Cherokee Strip Live Stock Association, 258
 Cherryh, C. J., 460
 Chesapeake Energy, 454-455
 Chesley, Frank, 336
 Cheyenne-Arapaho Stock Growers Association, 258
 Cheyenne Indians, 219, 220, 222-224, 227, 230, 259, 285, 458-459
 Chickasaw Academy, 159
Chickasaw and Choctaw Herald, 160
 Chickasaw Indians, 22, 94, 96
 and allotments, 271
 in Civil War, 198, 218, 219
 constitution of, 159, 160
 and education, 159, 241
 and freedmen, 244
 government of, 128, 159-160, 241
 in Indian Territory, 158-160, 184, 241
 Light Horsemen, 159
 and oil, 257
 removal of, 134
 in Southeast, 127, 134
 treaties with, 134, 160, 216.
See also Indians.
 Chickasaw National Recreation Area, 18, 305
 Chickasaw Oil Company, 257
 chickens, *see* eggs, poultry.
 Chickasha, 14, 326, 361
 Chilocco Indian Schools, 245
 Chisholm, Jesse, 183, 251, **p**251
 Chisholm Trail, 197, 250, **m**250, 251, 256
 Choctaw, 14
 Choctaw Indians, 22, 93, 94, 96, 104, 124, 134, 283
 and allotments, 271
 in Civil War, 198
 Code Talkers, in World War I, 342, 343

- constitution of, 128, 153
- and education, 153-154, 242
- and freedmen, 244
- government of, 153
- in Indian Territory, 153-155, 184, 242
- Light Horsemen, 155
- mineral resources of, 256
- removal of, 130, 132
- and slaves, 155
- in Southeast, 127, 130
- treaties with, 126, 130, 134, 216.
- See also* Indians.
- Choctaw Intelligencer*, 155
- Choctaw Railroad, 300
- Choctaw Telegraph*, 155
- Chouteau, Auguste, 96-97, 107
- Chouteau, Auguste Pierre, Jr. (Colonel A. P.), 108, **p**108, 122, 139, 183
- Chouteau, Pierre, 107, 122
- Chouteau, Yvonne, 375
- Christian, Charlie, 373-374
- chunkey, **p**53
- chuck wagons, 247-250
- Chupco, John, 216, 240
- Chustenahlah, 202
- Chusto Talasah, Battle of, 200
- Cimarron County, 10, 109, 178, 284
- Cimarron Cutoff (Route), 109, 178, 219
- Cimarron River, 31, **p**31, 105
- Cimarron Territory, 283
- Citizen Band of Potawatomi Indians, 231
- Citizens League, 314
- civil appeals, court of, 500, 502
- Civilian Conservation Corps, 367
- civil law, 501
- Civil Rights Act of 1964, 410, 416
- civil rights movement, 393, 410-412, 416
- Civil War,
 - battles in Indian Territory, 202, **m**202, 203, 204-206
 - beginning of, 195
 - black troops in, 204
 - causes of, 192, 194, 195
 - effects of, 214, 240
 - end of, 207
 - guerrilla warfare, 206
 - historic sites, 470, 478
 - and Plains tribes, 218-219
 - refugees, 207
- Claremore, 122, 180, 326, 427
- Clark, John G., 284
- Clark, Roy, 459
- Clark, William, 102
- Clayton Lake State Park, 21
- clerk, county, 507
- clerk, court, 507
- Cleveland County, 35, 273, 282, 285
- climate, 32-35
- Clinton, 11
- Clovis people, 45, 46-47
- Clovis spear point, 46, **p**46
- coal, 26, 256-257, 306, 357
- Coalgate, 17, 256
- Cobb, Geraldyn M., 403, **p**403
- Code Talkers, 342, 343, **p**378-379, 388
- Cody, "Buffalo Bill," 252
- Colbert, Dougherty, 241
- Colbert, George, 158
- Colbert, Winchester, 216, **p**217
- Colbert's Ferry, 184, 185, 255
- Cold Springs, 27, 178
- Cold War, 399-400, 410, 436
- collective bargaining, 368
- colleges and universities, 450, 522-523. *See also* specific schools.
- Collins, Reba, 460
- Collins Institute, 159
- colony, 77
- Colored Agricultural and Normal School, 288
- Columbian mammoth, 47, **p**47
- Columbus, Christopher, 56, **p**64-65, 70-71, **p**70
- Comanche County, 49, 289
- Comanche Indians, 59, 94, 96, 121, 146, 165, 218, 219, 220, 224, 228, 229, 259, 289, 290, 388
- Comaneci, Nadia, 457
- Commerce, 306
- commerce, secretary of, 495
- commissioner, county, 507
- commissioner of insurance, 494, 497
- commissioner of labor, 494, 497
- committees, legislative, 500
- Common Core State Standards, 451
- communism, 353, 382, 436
- compressed natural gas (CNG), 454

compromise,
 of 1850, 192, **m**193, 194
 Missouri, 6, 120, **m**120, 193
 Computational Geosciences, 447
 Conestoga Indians, 139
 confederacy, 94
 Confederate States of America, 195. *See also* Civil War.
 Connell State, 326
 Conner, Bart, 457
 Connors State College, 326
 conquistadors, 73
 conservation, 338, 367, 372-373. *See also* environment.
 consolidated schools, 394
 constitution, 98
 amendments to, 313
 Indian, 128, 136, 153, 159, 160
 state, 310, 311-315, 494
 constitutional convention, state, 310-311
 contract, 183
 Conway, Mary, 180
 Cooley, D. N., 215
 Cooper, Douglas, 198, 200, 203-204, 205
 Cooper, L. Gordon, 403
 cooperatives, 328, 368
 Cooper Bonebed, 47
 Cooperton site, 44
 Cordell, 11
 Corn (formerly Korn), 343
 Coronado, Francisco Vasquez de, 56-57, 73-75, **p**74, **m**75, 83
 Corporation Commission, 330, 338, 497
 corporations, 314
 Corps of Discovery, 102
 Cortés, Hernando, 73, **p**73
 Cosden, Joshua S., 336, 355
 Cotchoche, 216
 cotton, 293, 300, 302-303, 357, 422
 Couch, William L., 274, **p**275
 council of defense, 342-343
 Count Basie, 373
 counties, 311, 506, **m**507
 county excise board, 508
 county government, 506-508
 county seat, 506
 courts, state,
 of civil appeals, 500, 502
 of criminal appeals, 500, 501, 503, **p**503
 district, 312, 500, 503
 municipal, 312
 supreme, 312, 500, 501-502, **p**502, 503
 Cowboy Hall of Fame, 395
 cowboys, 247
 Cowskin Prairie, 204
 Craig County, 256
 Craterville, 307
 Crazy Snake Rebellion, 272
 credit, 364
 Creek Indians, 96, 98, 104, 126, 153
 and allotments, 271
 in Civil War, 198
 constitution, 158, 242
 and education, 157, 243
 and freedmen, 244
 government of, 128, 156, 157, 272
 in Indian Territory, 156-158, 242-243
 Light Horse, 157, 242
 Lower, 133, 156, 199, 242
 Loyal, 200, 202, 207
 and oil industry, 336
 removal of, 133
 and slaves, 157
 in Southeast, 127, 133
 treaties with, 216
 Upper, 133, 156, 199, 201, 242.
 See also Indians.
 crime, 373-374
 criminal law, 501
 criminal appeals, court of, 500, 501, 503, **p**503
 Cross, 299
 Cross Timbers, 12, 17, 24, **m**25
 Crosstown Expressway, 455
 Crowe, William J., 436, **p**437
 Cruce, Lee, 330-331, **p**331
 culture, 43, 467
 Indian, 58, 60-61, 459, 469-470
 popular, 361
 prehistoric, 44-54
 Cunningham, Joan, 369
 Curtis Act, 271-272
 Curtiss-Southwest Airplane Company, 357
 Cusak Meats, 373
 Cushing, 336, 338, 453-454

Cushing-Drumright field, 336, 338
Custer, George Armstrong, 223-224, **p**224
Custer County, 286
Cutthroat Gap Massacre, 121, 146
Czechoslovakian settlers, 300, 485

D

Dalton people, 47
dams, 396
Dancing Rabbit Creek, Treaty of, 132, 153
Darlington, Brinton, 227
Davenport, James, 315
Davis, Alice Brown, 163
Davis, Jefferson, 147, 182, **p**196, 198, 199
Davis, Nancy Randolph, 398
Dawes, Anna, 263
Dawes, Henry, 270, **p**270
Dawes Commission, 271
Dawes Severalty Act, 270-271
Day County, 286
Debo, Angie, 460
Deep Deuce, 374
Deer Creek, 57
Delaware County
Delaware Indians, 121, 149, 183
Del City, 14
Delmar Gardens, 305
Democratic party, 284, 310
Department of Highways, 332
depression, *see* Great Depression.
deregulation, 421
de Soto, Hernando, 57-58, 76, **p**76, **m**76
desperados, 159
destitute, 153
Devon Energy Tower, 454, **p**455
Dewey County, 286
dictator, 382
discrimination, 314, 326-327
disease, and Indians, 84-85
disfranchisement, 328, 332
dissenters, 343
district attorney, 507
district courts, 500, 503
District of Louisiana, 101
diversity, 256, 467
Doak's Stand, Treaty of, 126, 130
Doaksville, 153

Dodge, Colonel Henry, 146-147
Domebo Canyon site, 47
Doris, 307
Downing, Lewis, 243
draft, 342, 384
Drew, John, 198, 202
drought, 24, 49, 370, 396, 446, 456
drovers, 247
Drumright, 336
dugout (canoe), 219
dugout (house), 280, 281
Dull Knife, 230
Duncan, 14, 256, 423, 439
Dunjee, Roscoe, **p**326, 327
Dunn, Bob, 373
Durant, 22, 326, 339, 386, 439, **p**439
Dust Bowl, 24, 370-371, **m**370
Du Tisne, Claude-Charles, 80-81
Dwight Mission, 161

E

Eagletown, 132, 154
Early Plains Indians, 54-55
earthquakes, 14, 16, 396, 457
East Central Normal School, 326
Eastern Cherokee, 160, 161
Eastern State College, 426
East Shawnee Trail, 250, **m**250
economy, 34, 82, 85, 353, 364, 365-366, 437-438, 450-456, **f**450
ecosystem, 17
Edmond, 14, 279, 285, 325
Edmondson, J. Howard, 402, 410, 437
education,
 academies, Indian, 148
 for blacks, 306
 Common Core State Standards, 451
 consolidated schools, 394
 higher, 325-326
 and integration, 412
 junior colleges, 423, 426
 Lottery Trust Fund, 441
 mission schools, 241
 Oklahoma C3 Standards, 451
 public, 313
 reforms, 419, 423, 426, 440-441
 state superintendent of, 441, 451, 497

subscription schools, 304
 territorial, 325
 vocational-technical, 423.
See also schools.
 education, secretary of, 495
 eggs, 17
 El Camino Real, 76, 77
 election of 1860, **m**194, **f**194, 195
 Electric Park, 305
 electric power, 34, 368
 elevation, 33
 Elk City, 11
 Ellis County, 397
 Ellis Island, 487, **p**487
 Ellison, Ralph, 374, **p**374
 Ellsworth, Henry, 139
 El Reno, 14, 256, 282, 289, 291, 300, 301, **p**301, **p**343, 456
 El Turco, 74, **p**74
 Emancipation Proclamation, 204
 embargo, 421
 emigrants, 158
 Enabling Act, 309-311, 329, 508
 encroachment, 96
 energy, 34, 453-455. *See also* oil industry.
 energy, secretary of, 495
 Enhanced Fujita Scale for Tornadoes, **f**34
 Enid, 14, 256, **p**287, 300, 305, 326, 386, 423
 England, 81, 92, 93, 94, 96, 97-98. *See also* Great Britain.
 entertainment, popular, 394-395, 396
 environment, 3, 7. *See also* conservation.
 epidemic, 101
 Epworth University, 326
 equal protection clause of Fourteenth Amendment, 412
 Equal Rights Amendment, 417
 Ericcson, Leif, 68, **p**68
 erosion, 9
 ethnic group, 483-486
 Euchee Indians, 138
 Eufaula, **p**302
 Eufaula Lake, 19, 29, 175, 396, 425
 evolution, teaching of, 363
 executive branch of government, 312, 494-497
 expedition, 70
 exploration and settlement, **m**72
 of New World, 70-81
 of Oklahoma, 74-77, 79-81, 102-106

F
 45th Division, 387, 400
 Failing, George, 373
 Fairfield Mission, 161
 Fair Meadows, 438
 fairs, 439. *See also* festivals and fairs.
 Fallin, Mary, **p**494, 496
 Farm Credit Administration, 368
 farmers, 328
 cooperatives, 328
 during Great Depression, 368
 Indian, 50
 organizations for, 357
 in postwar period, 353
 price supports for, 422-423
 tenant, 242, 368, 371
 during wartime, 344, 389
 Farmers Alliance Party, 284
 farming, 357, 370. *See also* agriculture.
 Farm Security Administration, 368
 Federal Deposit Insurance Corporation, 367-368
 Federal Emergency Relief Administration, 367
 Federal Housing Administration, 368
 Ferguson, Elva Shartel, 288
 Ferguson, Thompson B., 288, **p**288, 289
 Ferris, Scott, 315
 festivals and fairs,
 aviation, 472
 Civil War reenactments, 470
 cultural heritage, 473
 film, 473
 flora and fauna, 470
 frontier, 470
 harvest, 471
 music, 468
 Native American, 468
 state fairs, 471
 trails and rails, 472
 Fisher, Ada Lois Sipuel, 398, **p**398
 Five Tribes (Nations), 127, 153, 182, 271-272.
 See also Indians, specific tribes.
 Flaming Lips, 457, 459
 Fletcher, Alice, 270, 271
 flint knapping, 46
 Floyd, Charles "Pretty Boy," 373
 Floyd, William, 327
 Foley-Davis, Lelia, 416

Folsom people, 47-48
 Foreman, Grant and Carolyn, 460
 forests, 24, 25
 Fort Arbuckle, 22, 138, 148, 181, **p**196, 197
 Fort Blunt, 204
 Fort Cobb, 148, 165, 197, 222, 224
 Fort Coffee, 134, 148
 Fort Coffee Academy, 148, 154
 Fort Davis, 199, **p**199, 203
 Fort Gibson, 110, **p**122, 123, **p**123, 133, 179, 203, 204, 205
 Fort Holmes, 147, 175
 Fortier, Michael, 444
 Fort McCulloch, 199, 203
 Fort Nichols, 219-220
 Fort Reno, 231, 388, 470
 forts, 146
 Fort Sill, 16, 224-225, 289, 342, 357, 361, 388, 451, **p**451, 478
 Fort Smith (Arkansas), 105, 106, 110, 123, **p**125, 181, 204, 215, 260
 Fort Supply, 223
 Fort Towson, 22, 111, 124, 134, 155
 Fort Washita, 22, 148, **p**148, 197, **p**197
 Fort Wayne, 148, 204
 fossil, 43
 fossil fuels, 26
 Foss Lake, 11
 Fourteenth Amendment, 412
 France, 77-80, 92, 93, 94, 95, 96, 98
 Franklin, John Hope, 460
 Franklin, Wirt, 338
 Franks, Tommy R., 449, **p**449
 Frantz, Frank, 289, 314, **p**314
 Frederick, 12
 freedmen, 215, 244-245
 Freedmen's Bureau, 211, 244
 free state, 193
 French and Indian War, 94-96
 Frisco, 282
 Frisco Railroad, 255, 299, 301
 frontier, 93
 official closing of in 1890, 285
 fuel cells, 454
 Fujita tornado scale, **f**34
 Fulton, Elmer, 315
 fur trade, 79, 85, 92, 107, 108

G
 Galbreath, Robert F., 336
 Garber, 26
 Garfield County, 288
 Garner, James, 429, **p**429
 Garrett, John, 261
 Garrett, Sandy, 441
 Garriott, Owen, 427, **p**428
 garrison, 224
 Garvin County, 138
 Gary, Raymond, 400, **p**400, 402, 496
 gas, natural, 26, 324, 338, 421
 Gatty, Harold, 358
 Gautt, Prentice, 412
 geography, of state, 2-35
 geographic regions, 8-22, **m**9
 vital statistics, 4, 6-7, 512
 German settlers, 485
 Germany, and World War II, 382, 383-384
 Geronimo, 252, 289
 gerrymandering, 331
 GI Bill, 393
 Gibson, Arrell Morgan, 460
 Gibson Station, 255
 Gilcrease, Thomas, 336, 395
 Gilcrease Museum, 395, 480, **p**480
 Gill, Vince, 457, 459
 Glass, Anthony, 103
 Glass Mountains, 11, **p**11
 Glenn Pool, 336
 Golden Pass, 307
 Goldman, Sylvan, 373
 Good Roads Association, 339
 Goodwell, 10, 326
 Gopher John, 164
 Gore, Thomas P., 324, **p**324
 government, county, 324, 437, 506-508
 government, municipal, 279, 324, 508-509
 government, state,
 branches of, 312, 494-503
 cabinet, 495
 constitution, 311-315, 494
 executive branch of, 312, 494-497
 judicial branch of, 312, 500-503
 legislative branch of, 312, 498-500
 governor,
 list of, 518-519

powers of, 495-496
state, 312, 314, 494
Governor's Mansion, **p**495
Grady County, 35
grandfather clause, 328, 332
Grandfield, 339, 456
Grand Lake O' the Cherokees, 20, 396
Grand River, 20, 31, 110
Grand Saline, 105
Granite, 329
granite, 27
Grant, 112
Grant, Amy, 457
Grant County, 288
Grapes of Wrath, The, 371
grasslands, 10, 14, 17, 24, 25, 247, 258
Grazinglands Research Laboratory, 450
Great Britain, 94, 95, 96, 383
Great Depression, 364-374
 bank failures, 364, 365
 factors contributing to, 364-365
 and New Deal measures, 367-369
 Oklahoma in the, 365-366
Greater Seminole field, 355-356
Great Plains, 7, 370-371
Great Raft, 22
Great Salt Plains, 12, 15, **p**15, 105
Great Salt Plains Lake, **p**14
Great Salt Plains National Wildlife Refuge, 12
Great Spanish Road, 99
Great Western Cattle Trail, 251
Green, David, 427
Green, F. B., 284
Green Corn Rebellion, 343
greenhouse and plant industry, 455
Greenwood, 327, 354-355
Greer, Frank, **p**277, 279
Greer County, 11, 283
Gregg, Dr. Josiah, 175
Grimes, William C., 289
groundwater, 28
Grove, 20
guardianship, 198
guerrillas, 206
Guess, George, 125, 308. *See also* Sequoyah.
Guthrie, 14, 255, 279, 282, 285, 301, 310, 311, 315, 361, 439, 456

Guthrie, Woody, 371, **p**371
Guymon, 10, 427
gypsum, 11, 27, 306-307
Gypsum Hills region, 11
H
Hackberry Flat Wildlife Management Area, 12
Hainai Indians, 165
Hall, David, 419
Halliburton, Erle, 338
Hamilton, Argus, 457
Hamilton Statehood Bill, 309-311
Hamlin, A. C., 328
Haney, Enoch Kelly, 460
Hannaford, J. T., 256
Hanraty, Pete, 256, 311, **p**312, 313
Hanson, 459
Harjo, Chitto (Crazy Snake), 272, **p**272
Harjo, Chocote, 216
Harjo, Echo, 158
Harjo, Fos, 216
Harjo, Oktarharsars, 216, 242
Harmon County, 11, 283
Harper County, 47
Harrah, 14
Harris, Cyrus, 158, 241
Harris, LaDonna, 418, **p**418
Harrison, Benjamin, 275, 276, **p**276, 282, 284, 285, 286
Hart, Carolyn, 460
Hartshorne, 26
harvest festivals, 471
Harvey Houses, 359
Haskell, 58
Haskell, Charles N., 309, 310, 311, 314, 315, 317, 324, 329, 330, 338
Haskell State, 326
Haskins, Don, 412
Hastings, William Wirt, 309
Hazen, William, 222
headright, 339
Healdton field, 26, 334-335, 338, 344
health and human services, secretary of, 495
Heavener, 68
Heavener Runestone, 69
Heavener Runestone Park, **p**21, 69
Heflin, Van, 459

Hefner, Robert, 338
 Helena, 326
 Henry Kendall College, 326
 Herrington, John, 428
 Hewitt, 26
 higher education, 325-326
 High Plains region, 10
 Hightower, Rosella, 375
 highways, 332, 339, 340, 395, 400, 402
 Hillerman, Tony, 460
 Hinder, 459
 Hinton, S. E., 428
 Hispanic Americans, 485-486
 Hitler, Adolf, 382, 383, **p**383, 384, 388, 389
 Hobart, 289
 Hobby Lobby, 427
 Hokeah, Jack, 369
 Holahiti Emathla, 163
 Holland, Fern, 461
 Hollis, 11, 307
 Homestead Act, 214, 215, 275
 homesteaders, 214, 274, 275, 278, 280-281, 285-288
 Honey Springs, Battle of, 205, **p**205, 207, 470
 Hooker, 456
 Hopewell, Treaty of, 98
 Hornday, William Temple, 150
 horses, 57, 79, 82-83, 438, 456
 hourglass selenite crystals, 12
 Houser, Allan, 459, **p**464
 house of representatives, state, 312, 498, **p**498, 499, 500
 Howard, Ron and Clint, 429
 Hugo, 22
 human resources and administration, secretary of, 495
 human rights, 153
 human services, secretary of, 495
 hydraulic fracturing (fracking), 454
 Hydro, 180
 hydroelectric power, 396

I

Iba, Henry, 395, 412
 Idabel, 22
 Illinois River, 20, 31
 immigrants, 172, 173

immunity, 84, 85
 impeachment, 332, 363
 impressment, 120
 Indianahoma, 219
 Indian Citizenship Act of 1924, 345, 351
 Indian Civil Rights Act, 418
 Indian Expedition, 203-204
 Indian Removal Act, 130
 Indians,
 academies, 148
 agents, 132, 226, 227, 228
 and agriculture, 50
 and American Indian Movement (AIM), 418
 Archaic culture, 48-49
 artists, 369
 belief systems, 58
 citizenship for, 345, 351
 and civil rights, 418
 contact with Europeans, 56-58
 contemporary, 458-459
 cultures, 58, 60-61, 459
 and Curtis Act, 271-272
 and Dawes Act, 270-271
 and disease, 84-85
 Early Plains, 54-55
 and education, 148
 ethnic groups, 483
 and family, 60
 federal policy toward, 225-228, 270-271
 festivals, 468
 and food, 61
 and gaming, 459
 government systems of, 368
 in Great Depression, 368
 and the horse, 82-83
 hunting, 47-48
 and land, 118-119, 270-272, 275
 languages, 61
 lifestyle, 127
 migrations, 45, 120-123
 and missionaries, 127
 mound builders, 52-54
 peace policy, 225-228
 Paleo, 44-48
 Plains, 120
 Plains Village, 52
 plants used by, 61, 84

police, 242, 259
 population, 40, 56, 233
 prehistoric, 44-54
 relations with Europeans, 93-94, 96-97
 removal of, 126-128, 130, 132-139
 and slaves, 127, 216
 and tobacco, 84
 and trade, 82
 treaties with, 118-119, 126, 215-217, 232-233, 270
 wars involving, 222-224
 Woodland, 50-51, 131
See also Five Tribes, specific tribes.

Indian Territory, 174-175, 232-233
 court in, 260-263
 during Civil War, 196-197, 218-219
 early boundaries, 125, 127
 governors, 288, 289
 land openings, 276-281, 285-288
 and Oklahoma Territory, 308
 settling tribes in, 127-139, 152-165, 215, 231-233
 and statehood proposals, 308, 309
 surveying, 148, 271
 trails across, 177-181

indict, 363
 Industrial Institute and College for Girls, 326
 inflation, 353
 influenza, 345
 Initial Point, 18, 217
 initiative, popular, 313
 insurance, commissioner of, state, 494, 497
 integration, 411-412
 interstate highways, 395, 400, 402
 interurbans, 301
 iodine, 27
 Iowa Indians, 149, 285
 Iraq, 440, 449, 461
 Irish settlers, 484
 irrigation, 23, 28
 Irving, Washington, 24, 139, **p**139
 Isa-tai, 228
 Isparhecher, 242-243
 isthmus, 73
 Italian settlers, 484-485
 Italy, and World War II, 382, 383, 384, 385

J

Jackson, Andrew, **p**119, 120, 126, **p**126, 128, 130,

135, 136, 139
 Jackson, Wanda, 459
 Jackson County, 47, 283
 Jacobson, Oscar, 369
 Jake Bluff, 47
 James, Thomas, 109, 121
 Japan, and World War II, 382, 384-385
 Jayroe, Jayne, 413, 429, 457, 459
 jazz, 361, 374
 Jazz Hall of Fame, 457, 480
 Jefferson, 300
 Jefferson, Thomas, 100, 101, 102, **p**102, 104, 118,
 119, 126
 Jenkins, William M., 289
 Jenks, 19
 Jerome (Cherokee) Commission, 285
 Jim Crow laws, 314, 328
 John A. Brown Stores, 373
 Johnson, Andrew, 211
 Johnson, Ben, 459
 Johnson, Grant, 261
 Johnson, Jimmy, 429
 Johnston, Henry S., 311, 324
 Jolliet, Louis, 58, 77
 Jolly, John, 160
 Jones, Robert, 155, **p**155
 Jones, Shirley, 457
 Joplin Region, 306
 Joseph (Chief), 233, **p**233
 judicial branch of government, 312, 500-503
 Jumper, John, 163, 164, **p**164, 198, 240
 junior colleges, 423, 426,
 jurisdiction, 260
 justice of the peace, 312

K

Kansas, 149, 182, 194
 Kansas-Nebraska Act, 182, 194
 Karlselfni, Thorfinn, 69
 Kataka Indians, 147
 Katy Railroad, 255, 257, 299, 301
 Kaw Indians, 58, 75, 232, 289
 Kay County, 288, 299
 Keating, Frank, 504
 keelboat, 110-111, 177
 Keetoowah, 272
 Keith, Harold, 460

Keith, Toby, 457, 459
 Kelly, George "Machine Gun," 373
 Kemp, Jackson, 241
 Kennard, Motey, 158
 Kenton, 10, 49
 Kerr, Robert S., 399, **p**399, 425, 496
 Kerr Center, 450
 Keystone Lake, 17, 425
 Kiamichi River, 31
 Kichai Indians, 121, 165
 Kickapoo Indians, 138, 149, 288
 kickback, 437
 Kicking Bird, 226, 227, 230, **p**230
 Kildare, 300
 King, Martin Luther, Jr., 411
 Kingfisher (Lisbon), 276, 279, 282, 285, 325
 Kingfisher County, 273, 282, 285
 Kiowa-Apache Indians, 121, 220
 Kiowa County, 44, 289
 Kiowa Five, 369
 Kiowa Indians, 55, 121, 146, 147, 220, 223, 228, 229, 259, 289, 290
 Kirkpatrick, Jeane, 436, **p**436
 Korean conflict, 399-400
 Krebs, 256
 Ku Klux Klan, 353

L

labor, 313, 324, 329, 353, 368
 labor, commissioner of, state, 494, 497
 La Bruyere, Andre Fabre de, 81
 Laclede, Pierre, 96-97
 La Harpe, Bernard de, 58, 79-80
 Lake Altus-Lugert, 16
 Lake Hudson, 47
 Lake Hugo, 22
 Lake Lugert, 396
 Lake Murray, 22
 Lake Murray State Park, 368
 Lake Oologah, 19, 425
 Lake Optima, 10
 lakes, 28, 29, **m**29. *See also* specific lakes.
 Lake Tenkiller, **p**32
 Lake Texoma, 22, 29, 373
 Lake Wister State Park, 21
 Lakewood Electric Park, 305
 land,

claiming, 278, 280-281
 openings, 276-281, 285-288, 289-290
 tribal ownership of, 270
 land bridge, Bering, 44
 Langston, 280, 288, 325
 Langston University, 398
 Larkin, Moscelyne, 375
 La Salle, René Robert Cavelier, Sieur de, 77-79, **p**78
 Latimer County, 51
 latitude, 4, 5, 6, 33
 Latting, Patience, 416
 Lawhead, J. H., 306
 lawmen, 260, 261
 laws, making of, 499-500
 Lawson, Roberta Campbell, 342
 Lawton, 16, 289, 291, 326, **p**340
 lead, 306, 357
 Leased Lands, 216
 Leavenworth, General Henry, 146-147
 Lee Way Motor Freight, 373
 Leflore, Campbell, **p**344
 Leflore, Greenwood, 130, 153
 Leflore, Thomas, 153
 legislative branch of government, 312, 324-325, 498-500
 Legislature, state, 312, 324-325, 498-500
 committees, 500
 how a bill becomes law, 499-500
 Lehigh, 256
 Lenna, 396
 Letts, Billie, 460
 Lewis, Meriwether, 102
 Lewis and Clark expedition, 101-102
 lieutenant governor, 494, 496-497
 lighthorsemen, 242, 243, **p**243, 259
 limestone, 27
 Lincoln, Abraham, 194, **m**194, **f**194, 195, **p**195, 204, 211
 Lincoln County, 285, 288
 Lindbergh, Charles, 359
 Little Sahara State Park, 12, **p**14, 473, **p**473
 Little Wolf, 230
 location, Oklahoma, 5-6, 24
 Locust Grove, 203
 Logan County, 273, 282, 285
 Long, Frank, 369
 Long, Major Stephen H., 105, 173

Longest site, 59
Long expedition, 105-106
long hunters, 97
longitude, 6
Lookeba, 456
Looney, John, 160
lottery, 135, 289
Louisiana Purchase, 100-109, **m**101
Love, Robert, 216
Love, Tom, 427
Love County, 49
Lovely's Purchase Treaty, 123
Love's Country Stores, 427
Loyal (formerly Kiel), 343
Loyal Creek, 200, 201 202, 207
Lucid, Shannon, 428, **p**428
Luper, Clara, 402, 411-412, **p**411
Lurty, Warren, 284, **p**284

M

Mabee-Gerrer Museum of Art (Shawnee), 476
Made in Oklahoma Coalition, 455-456
Madill, 22
Magee, Carl, 373
Main Street Program, 438-439
Major County, 11
Mallet, Pierre-Antoine and Paul, 81
mammoth, 46, 47. *See also* Columbian mammoth,
woolly mammoth.
Mangum, 372
manifest destiny, 99, 172, 173-174
Mankiller, Wilma, 458, **p**458
Mantle, Mickey, **p**394, 395
MAPS, 441-443
Marcy, Randolph B., 179-180, **p**180, 181
Marietta, 339
Marland, E. W., 355, 372, **p**372
Marquette, Father Jacques, 58, 77
marshals, deputy, 260, 261
martial law, 353, 355
Martin, Robert, 284, 288
matrilineal society, 135, 161
Mauldin, Bill, 387
Mayes, Joel Bryan, 162
Mayes County, 47
McAlester, 17, 26, 256, 300, 301, 329, 386, 388
McAlester, James J., 256
McAlester Army Ammunition Plant, 451
McCabe, Edward, 280, **p**280
McClanahan, Rue, 459
McClellan-Kerr Arkansas River Navigation System,
19, 399, 424-425
McCombs, Solomon, 369
McCoy, Isaac, 148
McCoy, Joseph, 250-251
McCulloch, Ben, 198, 202, **p**203
McCurtain, Green, 309
McCutchan-McLaughlin site, 51
McEntire, Reba, 457, 459
McGuire, Bird S., 314
McIntosh, Chilly, 133, 198
McIntosh, D. N., 198, 205, **p**205, 216
McIntosh, Roley, 156, 157
McIntosh, William, 133
McIntosh County, 24, 256
McIntyre, Duncan A., 357
McLaurin, George, 398
*McLaurin v. Oklahoma Board of Regents for Higher
Education*, 398
McShann, Jay, 373
McVeigh, Timothy, 443
Medford, 256, 339
medical research, 394
Medicine Lodge Treaty, 220, **p**221, 222
Medicine Park, 16
Meers, 16, 307
Memorial of Reconciliation, 457
Menawa (Creek Chief), **p**133
Merriman, Ryan, 459
mesa, 10
Mexican-American War, 173-174, **p**174
Mexico, 173, 174
MG Novelty, 373
Miami, 20, 306, 339, 361, 387
Miami Indians, 149, 271
Miami School of Mines, 326
Micco, Coweta, 216
middens, 43
middlemen, 68, 70
Midwest City, 14, 386
migrate, 121
migrations, prehistoric, 45
Mikanopy, 163
Mike Monroney Aeronautical Center, 452

Miles, John, 227
 military, secretary of the, 495
 Miller, George Washington, 252
 Miller, Joe, 252, **p**252
 Miller, Roger, 459
 Miller, Zeke, 261
 mineral resources, 9, 16, 18, 20, 26-27, 334,
 coal, 19, 26, 256-257, 306, 357, 453
 copper, 422
 gypsum, 306-307
 lead, 27, 306, 344, 357
 oil and natural gas, 26, 324, 335-340, 344, 453-
 454
 zinc, 27, 306, 344, 357, 422.
 See also mining, oil industry.
 mining, 256-257, 306-307, 313, 353, 357, 422
 minority, 159
 mission, 154
 missionaries, 75, 93, 127, 153, 157, 159, 161
 mission schools, 241
 Mississippi River, 99
 Missouri Indians, 289
 Missouri Compromise, 6, 120, **m**120, 193
 Missouri-Kansas-Texas Railroad, 255, **m**255
 Mitchell, Leona, 457, 459
 Mohawk Indians, 139
 Momaday, N. Scott, 428
 Moore (Verbeck), 14, 279
 Moore, Paul, 460
 Mopope, Stephen, 369
 mound builders, 52-54
 mountains, 9
 Mount Scott, 16, **p**16
 Mullally, Megan, 459
 Munford, Morrison, 273
 municipal government, 508-509
 Murcer, Bobby, 429
 Murrah, Alfred P., 444
 Murray, Johnston, 400
 Murray, William H. "Alfalfa Bill," 309, 310, 324, 366,
 p366
 Murray County, 18, 49,
 Murray State College, 326
 Murrell, George, 163, 481
 Murrell Mansion, 481
 Muscogee Creek Nation, 133.
 See also Creek Indians.

Museum of the Great Plains, **p**88-89
 museums, 475-482.
 African American, 479
 art and artifacts, 480
 automobiles, 482
 aviation and space, 482
 Civil War sites, 478
 famous Oklahomans, 479-480
 frontier era, 477-478
 Native American, 476-477
 prehistory, 476
 railroads, 478-479
 Route 66, 479
 sports, 482
 trails, 478
 See also specific museums.
 Mushulatubbe, 153
 music, 373-374, 395
 musicians, Oklahoman, 459
 Muskogee, 19, 301, 305, 339, 361, 386, 396
 Mustang, 14
 Myriad Botanical Gardens, **p**441, 442

N

90th Infantry Division, 388
 99s Museum of Women Pilots, 452
 Nacodoches Indians, 58
 Nanih Waiya, 153
 nanotechnology, 450
 Nárvaez, Pánfilo de, 73
 NASA, 402, 427-428
 Nation, Carrie, 313-314, **p**313
 National Association for the Advancement of Col-
 ored People (NAACP), 402
 National Cowboy and Western Heritage Museum,
 395, 480
 National Guard, Oklahoma, 342, 354, 355, 366,
 387, 449, 452
 National Labor Relations Act, 368
 National Memorial Institute for the Prevention of
 Terrorism, 445
 National Memorial Museum, 445
 National Organization of Women (NOW), 417
 National Severe Storms Laboratory, 34, 447
 National Weather Center, 35, 447
 National Weather Service Forecast Office, 447
 National Women's Political Caucus, 417

National Youth Administration, 369
 Native Americans, *see* Indians.
 Natsoo Indians, 58
 natural gas, 26, 324, 338, 421
 natural resources, 23-31
 negotiations, 146
 Nelson, Lauren, 457
 neutral, 197, 342
 Neutral Strip, 283
 New Deal, 366-369
 New Echota, 128, **p**128
 New Hope School (Academy), 154, **p**155
 Newkirk, 300, 339
 New Spring Place, 257
 New Wilson, 338
 NEXRAD Radar Operations Center, 447
 Nez Perce, 233
 Nichols, Terry, 443-444
 Nigh, George P., 437, 438, 461, 496
 Ninety-Nines, 452
 Nitakechi, 153
 NOAA Weather Partners, 447
 Noble, 12
 Noble, Lloyd, 338
 Noble County, 288
 nomadic, 44
 No Man's Land, 194, 282, 283-284.
 See also Panhandle.
 Norick, Ronald, 442
 normal school, 285
 Norman, 14, 34, 35, 279, 282, 301, 325, 361, 386, 439
 North Canadian River, 30, 442
 Northeastern Normal School, 326
 Northeastern Oklahoma A & M College, 426
 North Enid, 300
 North Fork River, 31
 Northwestern Normal School, 288
 Northwest Ordinance, 119
 Northwest Passage, 72, 77, 81
 Nowata, 456
 Nuttall, Thomas, **p**106, 107

O

101 Ranch, 252-253, 344
 101 Ranch Wild West Show, 252-253, **p**252-253, 468, **p**468

Oak Ridge Mission School, 164
 Office of Inter-Agency Coordination, 415, 419
 official closing of the frontier in 1890, 285
 O'Hara, Kelli, 457
 oil industry,
 in 1970s, 420-421
 in 1980s, 438
 from 1990s to today, 453-454
 beginnings of, 26, 257, 335
 and deregulation, 421
 and economy, 26, 366
 and embargo, 421
 and energy crisis, 421
 fields, 335, 336, 338, 339, 355, 356
 first wells, 26, 335
 growth of, 355-356
 and Indians, 257, 338-339
 importance of, 26
 and imported oil, 420
 jobs in, 336
 and natural gas, 338, 339, 421
 and OPEC, 420, 421
 in postwar periods, 353, 355
 prices, 344
 regulation of, 338, 420
 reserves, 453
 during World War I, 344
 Oilton, 336
 Okemah, 361, 371
 Okfuskee County, 396
 Okies, 371
 Oklahoma,
 Centennial, 457, **p**457
 Diamond Jubilee, 439
 population, 353, 364, 393, 429, 458
 statehood, 308-317
Oklahoma! (musical play), 391
 Oklahoma Agricultural and Mechanical (A&M) College, 398
 Oklahoma Aquarium, 19
 Oklahoma Baptist University, 326
 Oklahoma Bureau of Investigation, 356
 Oklahoma C3 Standards, 451
 Oklahoma Centennial Land Run Monument, 457, 460
 Oklahoma Center for the Advancement of Science and Technology, 450

- Oklahoma City, 32, 285, **p**305, 329-330, **p**352, 357, 361, 385, 386, 396, 416, 423, 456
 bombing, 443-445
 and centennial, 457
 and desegregation, 411, 412
 festivals and fairs, 468, 469, 471, 473
 location, 6, 14
 and MAPS, 441-443
 museums, 475, 477, 480, 482
 and oil industry, 26, 356
 and railroads, 255, 300, 301
 and segregation, 326-327, 402,
 settlement of, 274, 279, 282
 Oklahoma City Barons, 460
 Oklahoma City Community College, 426
 Oklahoma City Museum of Art, 480
 Oklahoma City National Memorial and Museum,
 444-445, 480
 Oklahoma City Thunder, 460
 Oklahoma City University, 326, 412
 Oklahoma Climatological Survey, 447, 456
 Oklahoma County, 273, 282, 285, 288, 371
 Oklahoma History Center, 22, **p**421, 475, **p**475
 Oklahoma Indian Affairs Commission, 418, 502
 Oklahoma Medical Research Foundation, 394, 450
 Oklahoma Mesonet, 447
 Oklahoma Mining Company, 256
 Oklahoma National Guard, 342, 354, 355, 366,
 387, 449, 452
 Oklahoma River, 442
 Oklahoma State Fair, 471
 Oklahoma State Reformatory, 329
 Oklahoma State University, 325, 393, 395, 415
 Oklahoma Territorial Agricultural and
 Mechanical School, 325
 Oklahoma Territorial Normal School, 325
 Oklahoma Territorial University, 325
 Oklahoma Territory, 282-290
 establishment of, 282-283
 government of, 282, 283, 284-285
 Greer County, 283
 and Indian Territory, 308
 and land runs, 276-281, 285-288
 and statehood proposals, 308
 Okmulgee, 26, **p**156, 242, **p**304, 305, 361, 386
 Okmulgee County, 256
 Olds, Fred, 460
- Omaha Indians, 85
 Oñate, Juan de, 57, 76-77
 Oneida Indians, 139
 Onondaga Indians, 139
 OPEC, 420, 421
 Operation Desert Storm, 440
 Operation Enduring Freedom, 449
 Opothleyahola, 156, 200, 201, **p**201, 202
 Orcutt Park, 305
 ordinance, 326
 Oreana, 307
 Organic Act, 282-283, 306, 508
 Organization of the Petroleum Exporting Countries
 (OPEC), 420, 421
 Osage Coal and Mining Company, 257
 Osage County, 124
 Osage Hills State Park, 368
 Osage Indians, 17, 58, 94, 104, 105, 107, 121, 123,
 124, 146, 232, 259, 271, 290, 339, 356
 Osage Trace, 179
 Oscar Rose Junior College, 426
 Osceola, 137, **p**137
 Otoe Indians, 85, 289
 Ottawa County, 27, 306, 422
 Ottawa Indians, 95
 Ouachita Mountains region, 21
 outlaws, 260, 261
 Owasso, 19
 Owen, Robert L., 324, **p**325
 Owens, Steve, 429
 Ozark Plateau region, 20, **p**20
 Ozark Trails Association, 340
- P**
- Pacific Islander settlers, 486
 Pacific Railroad Act, 214
 Packard site, 47, **p**51
 Padilla, Friar Juan de, 75
 Page, Patti, 457, 459
 Paleo Indian culture, 44-48
 pandemic, 345
 Panhandle, 6, 10, 24, 33, 109, 120, 148, 178, 193,
 194, 219, 370, 456
 Panhandle State, 326
 pari-mutuel betting, 437, 438
 Paris, Treaty of, 95
 Parker, Bonnie, 373, **p**373

Parker, Cynthia Ann, 229
 Parker, Isaac C., 260, 261 **p**262, 263, 274, 275
 Parker, Quanah, 228, 229, **p**229, 230
 Park Hill Mission, 161
 parks, 368, 396
 Parks, Rosa, 411
 partisan, 362
 Pauls Valley, 255
 Pawhuska, 17, 26, 339
 Pawnee Bill's Wild West Show, 468
 Pawnee County, 288
 Pawnee Indians, 85, 232, 286
 Payne, Andy, 361
 Payne, David L., 274, **p**274
 Payne County, 273, 282, 285
 Payne's Landing, Treaty of, 137
 peacekeeping mission, 148
 Pea Ridge, Battle of, 202-203
 Peck, William, 175
 Pegg, Thomas, 198, 204
 pelicans, white, **p**14
 Penn Square Bank scandal, 438
 Peoria, 306
 Peoria Indians, 271
 Perry, 300
 Perry Ranch site, 47
 Perryville, 179, 206
 Persian Gulf War, 440
 petrochemicals, 356
 petroglyphs, 43
 petroleum, *see* oil industry.
 Philbrook Museum, 337, 480, **p**480
 Phillips, Frank A. and L. E., 17, 337, 355
 Phillips, Leon C., 372
 Phillips, Waite, 337
 Phillips, William, 204
 Phillips University, 326
 Picher, 306, 422
 Pickens, T. Boone, 460
 Pickett, Bill, 252, **p**253
 Pike, Albert, 198, **p**198, 199, 202, 203
 Pike, Zebulon, 103, **p**103, 104
 Pike-Wilkinson expedition, 103-104
 Pinckney's Treaty, 99
 pirogue, 102, 110
 Pitchlynn, Peter, 216, **p**216
 Pitt, Brad, 459
 Pizarro, Francisco, 73
 Plains Apache, 94
 Plains Village people, 52, **p**52
 plateau, 20
Plessy v. Ferguson, 326
 Pogue, William, 427
 political parties, 327-328
 Constitutional Union, 195
 Farmers Alliance, 284
 Greenback, 284
 Democratic, 195, 284, 310, 327, 328, 362-363
 People's, 284
 Republican, 195, 284, 310, 327, 328
 Socialist, 284, 326, 327-328, 343
 politics, 362-363
 Polk, James K., 173, **p**173
 Polo, Marco, 70
 polygamy, 60
 Pomeroy, Samuel, **p**214, 215
 Ponca City, 14, 255, 299, **p**304, 386, **p**509
 Ponca Indians, 85, 232-233, 252, 289
 Pond Creek, 300
 Pony Express, 185
 popular sovereignty, 194
 population, 327. *See also* Oklahoma population.
 Port, 23
 Port of Catoosa, 19, 425
 Porter, Darrell, 429
 Porter, Pleasant, 275, 309, **p**309
 Posey, Alexander, 309
 Post, Wiley, 358, **p**358, 372, **p**372
 Potawatomi Indians, Citizen, 231, 285
 Poteau River, **p**30
 Pottawatomie County, 285, 288
 Powell, Susan, 457, 459
 poultry, 17
 powwows, 469
 Prairie Plains region, 19, **p**19
 Pratt, Horace, 241
 precipitation, 33, **m**33
 prehistoric Indian cultures, 42-55
 price parity, 422
 Priority Academic Student Skills (PASS), 441, 451
 progressive movement, 311, 324, 328
 prohibition, 313-314, 330, 345, 402
 protégé, 103
 protohistoric, 54

Pryor, 326, 396
Pryor, Nathaniel, 108
Public Land Strip, 194, 283
Public Works Administration, 367
Pumpkin Creek site, 49
Purcell, 276, 386

Q

Quakers, 226, 228
Quapaw, 306
Quapaw Indians, 58, 122, 165, 198
quarantine, 251
Quartz Mountain State Park, 368
Quivara, 74, 75

R

radio, 361, 395
Ragtown, 338
railhead, 246
railroads
 routes, 182-183, 255-256, **m**255, 298-301
 transcontinental, 182, 214, 254, **p**254
rainfall, 33
Randall, Tony, 429
rapport, 227
Rascal Flatts, 459
ratify, 101
ration, 389
Reconstruction, 211, 215
recreation, 305
Red Bed Plains region, 12-14, **p**12, **p**13, **p**14
redbud, 25, **p**25
Red Earth Native American Cultural Festival, 459,
 469, **p**469
Red Fork, 335
Redlands Community College, 426
Red River, 22, **p**22, 29, 31, 106, 110, 283, 366, 372
Red River Plains region, 22
Red River War, 228, 230
Red Rock Canyon State Park, 11
Reed, Donna, 429
Reeves, Bass, 261
referendum, 311, 313
regions, geographic, 8-22, **m**9
relocation centers, 388
Remington Park, 438
renegades, 107, 228

Renfrow, William, 288, 308, **p**308
Republican Party, 195, 310
reservations, Indian, 219, 220, 228
Resettlement Administration, 368
Revolutionary War, 97-98, **p**97, **p**98
Reynolds, Allie, 395
rider (to legislation), 275
Rich Mountain, 20
Ridge, John, 135, 136
Ridge, John Rollin, 216
Ridge, Major, 135, **p**135, 136
Rita Blanca National Grassland, 10
rivers, 28, 29-31, **m**29, 110-111, 176-177.
 See also specific rivers.
Riverside Indian School, 245, **p**245
roads,
 building, 332, 339-340
 and Department of Highways, 332
 early, 124, 184, 340
 interstate highways, 395, 400, 402
 toll, 184
Robbers Cave State Park, 21, 368
Robert S. Kerr Environmental Research Center, 450
Robertson, Ann Eliza Worcester, 157, **p**157
Robertson, Dale, 429
Robertson, Mary Alice, 362, **p**362
Rock Church, 154
Rock Island Railroad, 256, 299, 300
Rock Mary, 180
rodeo, 252-253, 467-468, **p**468
Roger Mills County, 286, 289, 374
Rogers, John, 160, 163
Rogers, W. C., 309
Rogers, Will, 32, 252 **p**361, 362, 372, **p**372
Rogers County, 256
Roman Nose, 222
Roman Nose State Park, 12, 368, **p**368
Roosa, Stuart, 427
Roosevelt, Franklin, 366-367, **p**367, 384, 385
Roosevelt, Theodore, 289, 290, **p**294, 309, 315
rose rocks, 12, 307
Rose State College, 426
Ross, C. C., 314
Ross, John, 135, 160, **p**160, 162, 163, 198, 203,
 204, 216, 243
Ross, Lewis, 257
Ross, William P., 162, 198, 243

Roulston-Rogers site, 51
Round Mountain, 200
Route 66, 360-361, 371, 472
Rowland, Dick, 354-355
royalty, 256
Roy Smith site, 52
Rural Electrification Administration, 368
Rushing, Jimmy, 373, **p**373, 374
Russell, Marian, 219-220

S

Sac and Fox Indians, 149, 271, 285, 333
safety and security, secretary of, 495
Salina, 108, 122, 179, 180
salt, 27, 104, 105, 306
Salt Fork River, 31, 105
Sam Noble Oklahoma Museum of Natural History, 476
Samuel Roberts Noble Foundation, 450
Sand Creek Massacre, 219
Sand Springs, 17
Sands Rebellion, 242
Sandstone Hills region, 17, **p**17
Santa Fe, 77
Santa Fe Railroad, 255, 299, 300, 359
Santa Fe Trail, 103, 109, 177-178, 219
Sapulpa (Oklahoma), 17, 301
Sasakwa, 241
Satana, **p**220
Say, Thomas, 106, **p**106
Sayre, 439
Schermerhorn, John W., 139
School of Mines and Metallurgy, 326
schools, 394
 for blacks, 306
 colleges and universities, 522-523
 consolidated, 394
 government, 245
 higher education, 325-326
 integration of, 412
 junior colleges, 423, 426
 mission, 241
 normal, 285
 public, 304, 306, 363
 specialty, 326
 subscription, 304
 technology centers, 423

territorial, 284-285, 304, 306
vocational-technical, 423.
See also education.
science and technology, secretary of, 495
Seabourn, Bert, 459
Seay, Abraham J., 284, **p**285, 288
secede, 193, 195
secretary of state, 494, 495
Securities and Exchange Commission, 368
Seger, John, 227
Seger Indian Training School, 227
segregation, 244, 306, 326, 393, 398, 402
Selman Bat Cave, 11
seminaries, Cherokee national, 244
Seminole County, 51
Seminole field, 355-356
Seminole Indians, 126, 127
 and allotments, 271
 after Civil War, 240-241
 in Civil War, 198
 and education, 164, 241
 and freedmen, 244
 government of, 128, 240, 241
 in Indian Territory, 163-165
 removal of, 136-137
 and slaves, 164
 in Southeast, 136-137
 treaties with, 164, 216
Seminole State College, 426
senate, state, 312, 498, **p**499, 500
Senate Bill No. 1, 326
Seneca Indians, 138, 165, 198, 271
Sequoyah, 125, 128, 129, **p**129. *See also* Guess, George.
Sequoyah, State of, 309
settlers, 92, 484-486
Seven Sisters, 420
Shadid, Anthony, 461, **p**461
shaman, 58
Shamrock, 336
Shawnee, 17, 95, 183, 300, **p**300, 326, 386
Shawnee Indians, 121, **p**121, 198, 285
shelterbelts, 372
Shelton, Blake, 457
Sheridan, Philip, 220-225, **p**222
sheriff, county, 507
Shidler, 355

shopping centers, 426
 Sibley, George Champlin, 15, **p15**, 178
 Sibley expedition, 104-105
 Signature Rock, 178
 Sinclair, Harry F., 336, 355
 Sioux Indians, 232, 271
 Sipuel, Ada Lois, 398, **p398**
Sipuel v. Board of Regents of the University of Oklahoma, 398
 sit-in, 402, 411
 Skelly, William, 336
 skirmishes, 74
 Skullyville, 130, 132
 SkyDance Bridge, 455
 slavery, 120, 192-194
 slaves, 155, 157, 192-194, **p192**
 slave state, 193, 195
 Slick, Tom, 336
 smallpox, 85
 Smallwood, Norma, 429, 459
 Smith, J. M. C., 198, 216
 Smith, Shawntel, 457, 459
 Smokey, Lois, 369
 Snyder, 303
 Socialist Party, 284, 326-328, 343
 social reform, 329
 Social Security Act, 368-369
 soddie, 280-281
 soil, 11, 12, 14, 23-24
 Soldier Spring, Battle of, 224
 Sonic, 396
 sooners, 275
 Southard, 27, 303
 Southeastern Normal School, 326
 Southern Plains Range Research Station, 450
 South Oklahoma City Junior College, 426
 Southwestern Normal School, 288
 Southwestern Oklahoma State University, 426
 Soviet Union, 383, 384, 402
 Space Age, 402-403, 410, 452
 Spahn, Warren, 395
 Spain, 56, 72-77, 92-99, 102, 106
 Spanish flu pandemic, 345
 Sparks expedition, 102-103
 Spartan Aircraft Company, 393
 Spavinaw, 456
 Speed, Horace, 284
 Spencer Academy, 154
 Spiro Mounds State Archaeological Park, 21, **p38-39**,
 52, **p52**, 53-54, 470, 476, **p476**
 Springer Amendment, 275
 squatters, 275
 Stafford, Thomas, 427, **p427**
 stagecoach, 183-185
 Standing Bear, 232-233
 Standing Bear Park Project, 457
 Standing Rock, 175
 Starr, Belle and Sam, 260
 Star-Spangled Banner, The, 118
 state, secretary of, 494, 495
 State Capitol, 14, 27, **p27**, **p320-321**, 330-331, 356,
 480, **p490**, 504-505, **p504**, **p505**
 state government, branches of, 312
 statehood, 308-317
 state parks, 368, 396
 states' rights, 192, 193
 state symbols, 513-514
 stations, 179, 184, 185
 steamboats, 22, 111, 177, 206
 Stecker, 47
 Steele, George W., 284, **p284**, 288, 306
 Steen's Buttes, 180
 Steinbeck, John, 371
 stickball, 131
 Stillwater, 14, 274, 279, 282, 325, 386
 stock market, 364-365, 368
 Stokes, Montford, 139
 Stokes Commission, 139
 Stomp Grounds, 131
 Storm Prediction Center, 447
 Stout, Dr. Juanita Kidd, 411
 strikes, labor union, 257, 353
 Stringtown, 388
 Studi, Wes, 459
 subscription schools, 304
 subsidies, 368
 subsistence, 125
 suburbs, 393
 suffrage, 313, 345, 416
 Suggs, Sidney, 332, 339
 Sulphur, 18, 305, 326
 superintendent of public instruction, 494, 497
 supreme court, state, 312, 324, 500, 501-502, **p502**,
 503

survey, 148, 182, 217
Swimmer, Ross O., 458
Switzer, Barry, 429, 457
syllabary, Cherokee, 128, 129
symbols, state, 513-514

T

26th Amendment, 416
Taft, 326
Tahlequah, 20, 161, 162, 203, 236-237, 326
Tahlonteeskee, **p**162
Talimena Drive, 20, 21, **p**21
Talimena State Park, 21
Tallant, 356
Tallchief, Maria, 375
Tallchief, Marjorie, 375
Tallgrass Prairie Preserve, 17, **p**17, 150, **p**151
Tar Creek Superfund Cleanup Site, 422
tariff, 192
Tatum, Lawrie, 225-226, **p**226
Tawakoni Indians, 58, 147, 165
taxes, 325
 ad valorem, 507, 509
 gasoline, 509
 income, 325
 inheritance, 325
 on natural resources, 325
 property, 325, 507, 509
 sales, 372, 509
 use taxes, 509
 on utilities, 325
Teague, Bertha Frank, 417
technology, 450-451
technology centers, 423
Tecumseh, 164, 285
telegraph, 183, 214
television, 394
temperature, 32-33, **m**33
tenant farmers, 242, 368, 371
Tener's Western Wear, 373
territorial government, 284-285
Territory of Arkansas, 101
terrorism, 443-445, 448-449
Texas, 148, 149, 173, 174
Texas fever, 250
Texas County, 284
Texas Road, 173, 179, 199, 250

TG&Y stores, 373
Thompson, James, 460
Thorpe, Jim, 333, **p**333
Three Forks, 31, 107-108, 109, 110
Three Sands field, 355
Tiger, Jerome and Johnny, 459
Tiger Town, 336
Tillman County, 290
Tinker, Clarence L., 386
Tinker Air Force Base, 385, **p**385, 396, 447, 451
Tishomingo, 27, 158, 160, 326
Title IX, 417
Tonkawa, 288, 325
Tonkawa field, 355
Tonkawa Indians, 58, 59, 96, 165, 286
topography, 9
tornadoes, 34, **f**34, 35, **p**35, 175, 303, 396, 397, 446, 456
totem, 58
tourism, 466
towns, growth of, 278-280
township, 285
trade, 68, 80, 82, 85, 92, 107-108, 109
trading posts, 107-108
trails, 177-182
 California Road, 179-180
 Cherokee, 180
 early, 177, **m**179
 Santa Fe, 177, 178
 Texas Road, 179
Trails of Tears, **p**114, 126-139, **m**134, **p**136-137.
 See also specific tribes.
transcontinental railroad, 182, 214, 254, **p**254
transportation,
 airplanes, 357-358, 359, 360, 452
 automobile, 339-340, 360-361
 railroads, 254-256
 on rivers, 110-111, 176-177
 roads, 124, 184, 332, 339-340, 395, 400, 402
 stagecoach, 183-185
transportation, secretary of, 495
treasurer, county, 507
treasurer, state, 494, 497
treaty, 95, 118
 Adams-Onís, 106-107
 Atoka Agreement, 271
 of Augusta, 96

of Dancing Rabbit Creek, 132, 153
of Doak's Stand, 126, 130
of Hopewell, 98
of Indian Springs, 133
Lovely's Purchase, 123
Medicine Lodge, 220, **p221**
of New Echota, 135
of Paris of 1763, 95
of Payne's Landing, 137
Pinckney's, 99
of Pontotoc Creek, 134
trees, 20, 24, 25
tribe, *see* Indians, specific tribes.
tributary, 29
Tri-State District, 306, 344, 422
Tsa-La-Gi, 459, 476
Tsatoke, Monroe, 369
Tulahassee mission school, 157
Tulsa, 19, 26, 301, 305, 335, 336, 337, 354-355,
357, 361, 386, 387, 423
Tulsa 66ers, 460
Tulsa Community College, 426
Tulsa County, 256, 371
Tulsa Junior College, 426
Tulsa Oilers, 460
Tulsa Port of Catoosa, 425
Tulsa race riot, 354-355, **p354**, **p355**
Tulsa Shock, 460
Tulsa University, 326
Turkey Springs, Battle of, 230
Turco, El, 74, **p74**
Turner, Roy J., 399
Turner Falls, 18, **p18**
Turner Falls Park, 18
Turner Turnpike, 395, 399
Tuttle, 427
Twin Villages, 103
Battle of, 59, 94

U

Unassigned Lands, 273, 274, 275, 278
Underground Railroad, 194
Underwood, Carrie, 457, 459
Union Mission, 161
universities, 450, 522-523
University of Central Oklahoma, 325, 451
University of Oklahoma, 325, 335, 337, 395, 398,

412, 415, 447, 460
University Preparatory School, 288, 326
urban sprawl, 441-442
USS *Oklahoma*, **p384**, 385

V

Vann, Joseph, 160
Vance Air Force Base, 386, 451, 452
vegetation, 24-25
Verdigris River, 19, 31, 104, 107, 110
Vespucci, Amerigo, 72
veterans' affairs, secretary of, 495
veto, 496
viceroy, 56
Vietnam War, 413-415, **m414**
Vikings, 68, 69
Vinita, 20, 179, 255, 326, 386
vital statistics, 512
vocational-technical schools, 423
voting, *see* suffrage.

W

Waco Indians, 58, 147
Wagoner County, 256
Walker, Tandy, 205, 206
Walton, John C., 362-363, **p363**
Walton, Sam, 426-427
Wapanucka Institute, 159
war,
of 1812, 120
Civil, 192-207
Cold, 399-400
French and Indian, 94-96
Korean, 399-400
Mexican-American, 173-174
Persian Gulf, 440
Revolutionary, 97-98
on terrorism, 448-449
Vietnam, 413-415, **m414**
World War I, 340, 341-345
World War II, 382-390
Warehouse Market, 373
Warner, 326
Warning Decision Training Branch, 447
Warrior, Clyde, 417
Washington, George, 94, **p94**, **p95**, **p98**, **p99**
Washington County, 337

Washita, Battle of, 222-224
 Washita Battlefield National Historic Site, 477
 Washita County, 286, 289
 Washita River, 31, 147
 water resources, 28-31
 Watie Stand, 135, 136, 198, 199, 202, 203, 204,
 206, 207, **p**207, 216
 Watonga, 288, 339
 Watts, 374
 Watts, J. C., 429
 Waugh site, 47
 Waurika, 339
 Waynoka, 359
 weather, 32, 370-371, 374, 396, 446, 447, 456-457
 WeatherBank, 447
 Weather Decision Technologies, 447
 Weatherford, 288, 325, 339
 weather industry, 34, 447
 Weathernews Americas, 447
 Weaver, Dennis, 429
 Webb, Jimmy, 429, **p**429, 457
 Webbers Falls, 175
 Wells, Jerry Lee, 412
 Western Cherokee, 123, 124, 125, 160, 161
 Western Oklahoma State College, 426
 West Shawnee Trail, 250, **m**250
 Wes Watkins Agriculture Research and Extension
 Center, 450
 Wewoka, 17, 164, 240, 241
 Wharton, 300
 Wheeler Park, 305
 Wheelock Academy, 154
 Whipple, Lt. Amiel W., 182-183
 Wichita Agency, 228
 Wichita Indians, 55, 57, **p**58, 59, 74-75, 79, 80, 81,
 94, 96, 120-121, 146, 198, 289
 Wichita Mountains National Forest Preserve, 289
 Wichita Mountains region, 16
 Wichita Mountain Wildlife Refuge, 16, **p**16
 Wilburton, 21, **p**307, 326
 Wild Cat, 163, 164
 wildcatter, 26, 335, 339
 wildflower, state, 504
 wildlife, 10
 Wildman, 307
 Wilkinson, Bud, **p**394, 395
 Wilkinson, General James, 101, **p**102, 103

Wilkinson, James Biddle, 103-104
 Williams, Robert L., 324, 332, **p**332
 Will Rogers Downs, 438
 Wills, Bob, 374
 Wilson, Charles Banks, 460
 Wilson, Woodrow, 342, **p**342
 wind farms, 34, 454
 women, 345, 387, 389, 400, 416-417
 Women's Christian Temperance Union (WCTU),
 313
 women's suffrage, 313, 345
 Woodland culture, 50-51, **p**51
 Woods County, 44, 45, 105, 288
 Woodward, 11, 35, 305, 396, 397, 421
 Woodward, Neil, 428
 Woodward County, 47, 288, 397
 Woolaroc Museum and Wildlife Preserve, 17, 337,
p337, 470, 480, **p**482
 woolly mammoth, **p**46
 Worcester, Samuel, 128, 129, 135, 161
 worker's compensation, 332
 working conditions, 313
 Works Progress Administration (WPA), 369
 World War I, 340, 341-345
 World War II, 382-390
 Wright (formerly Bismarck), 343
 Wright, Alfred and Harriet, 154
 Wright, Allen, 216, 242, **p**242
 Wright, Muriel, 460
 Wyandot Indians, 165

Y

Yale, 361
 Yukon, 14

Z

zinc, 306, 344, 357, 422
 Zodletone Resort, 305

Acknowledgments

PICTURE CREDITS: The following abbreviations are used for the sources from which several illustrations were obtained.

CC	Creative Commons
LC	Library of Congress
LSB	Legislative Services Bureau, Oklahoma State Capitol
NARA	National Archives and Records Administration
OHS	Oklahoma Historical Society
OT	Oklahoma Tourism
PD	Public Domain
WC	Wikimedia Commons

COVER: (all) Reggie Lankford. **FRONT:** i Reggie Lankford. ii-iii Reggie Lankford. iii (inset) LSB. v LSB. vi-1 Reggie Lankford. **CHAPTER ONE:** 2-3 Reggie Lankford. 4 Reggie Lankford. 8 OT. 10 Jimmy Emerson/CC. 11 (above) WC; (below) Reggie Lankford. 12-13 (both) Reggie Lankford. 14 (above) Reggie Lankford; (below) OT. 15 (above) OT; (below) PD. 16 WC. 17 (above) Robin McDonald; (below) OT. 18 (above) OT; (below) Reggie Lankford. 19 Reggie Lankford. 20 (above) WC; (below) Robin McDonald. 21 WC. 22 Henley Quadling/CC. 23 Robin McDonald. 24 (both) Robin McDonald. 25 WC. 26 Robin McDonald. 27 Robin McDonald. 30 (above) Robin McDonald; (below) OT. 31 Robin McDonald. 32 OT. 35 Justin Hobson. **CHAPTER TWO:** 38-39 Oklahoma Archaeological Society. 40-41 Oklahoma Archaeological Society. 42-43 (all) Oklahoma Archaeological Society. 45 Painting by Patrick Brady. 46 (above) Pinson Mounds State Archaeological Area, Tennessee; (below) Oklahoma Archaeological Society. 47 Robin McDonald. 48 Pinson Mounds State Archaeological Area, Tennessee. 49 Illustration by Cherry Bishop. 51 (above) Oklahoma Archaeological Society; (below) Pinson Mounds State Archaeological Area, Tennessee. 52 (both) Oklahoma Archaeological Society. 53 Pinson Mounds State Archaeological Area, Tennessee. 54 (both) Reggie Lankford.

55 (above) Reggie Lankford; (below) Oklahoma Archaeological Society. 56 Robin McDonald. 57 Robin McDonald. 58 Robin McDonald. 59 Robin McDonald. 60 (both) Robin McDonald. 61 WC. **CHAPTER THREE:** 64-65 LC. 66-67 LC. 68 LC. 69 Robin McDonald. 70 LC. 71 (above) Architect of the U.S. Capitol; (below) LC. 73 (both) LC. 74 LC. 76 Architect of the U.S. Capitol. 78 (both) LC. 79 Robin McDonald. 80 Corbis. 81 Jamestown-Yorktown Foundation. 82 LC. 83 National Museum of American Art. 84 LC. 85 Corbis. **CHAPTER FOUR:** 88-89 Robin McDonald. 90-91 Robin McDonald. 92 Jamestown-Yorktown Foundation. 94 PD. 95 LC. 97 LC. 98 (above) LC; (below) Architect of the U.S. Capitol. 99 Architect of the U.S. Capitol. 100 (above) PD; (right) Historic New Orleans Collection. 102 (both) PD. 103 (both) LC. 105 (both) LC. 106 (both) LC. 107 Robin McDonald. 108 (above) Robin McDonald; (below) OHS. 109 LC. 110 Robin McDonald. 111 (above) Filson Club; (below) LC. **CHAPTER FIVE:** 114-115 Woolaroc Museum, Bartlesville. 116-117 Woolaroc Museum, Bartlesville. 118 LC. 119 LC. 121 LC. 122 (above) LC; (below) Reggie Lankford. 123 (both) Reggie Lankford. 125 Robin McDonald. 126 LC. 127 Reggie Lankford. 128 (above) Robin McDonald; (below) Reggie Lankford. 129 LSB. 130 Joslyn Art Museum, Omaha, Nebraska. 131 LC. 132 LC. 133 LC. 135 LC. 136-137 OHS. 137 (both) LC. 139 LC. **CHAPTER SIX:** 142-143 Robin McDonald. 144-145 Robin McDonald. 146 LC. 147 PD. 148 OT. 149 LC. 150-151 LC. 151 (above) WC. 152 Joslyn Art Museum, Omaha, Nebraska. 153 OHS. 154 (both) OHS. 155 (both) OHS. 156 (both) OHS. 157 OHS. 158 (above) OHS; (below) LC. 160 (above) OHS; (below) LC. 161 Robin McDonald. 162 (both) Robin McDonald. 163 LC. 164 OHS. 165 OHS. **CHAPTER SEVEN:** 168-169 LSB. 170-171 LSB. 172 PD. 173 Tennessee State Museum. 174 LC. 175 PD. 176 LC. 177 State Historical Society of Missouri. 180 LC. 182 OHS. 183 OHS. 184 LSB. 185 LC. **CHAPTER EIGHT:** 188-189 Oklahoma State Senate Historical Preservation Fund, Inc. 190-191 Oklahoma State Senate Historical Preservation

Fund, Inc. 192 LC. 195 LC. 196 (both) LC. 197 Robin McDonald. 198 LC. 199 PD. 201 LC. 203 (both) LC. 204 LC. 205 (above) LC; (below) OHS. 206 LC. 207 LSB. **CHAPTER NINE:** 210-211 Thomas Gilcrease Museum of American Art and History, Tulsa. 212-213 Thomas Gilcrease Museum of American Art and History, Tulsa. 214 LC. 215 OHS. 216 LC. 217 OHS. 218 LC. 219 LC. 220 OHS. 221 LC. 222 (both) LC. 223 LC. 224 LC. 225 Robin McDonald. 226 OHS. 228 (above) WC; (below) LC. 229 OHS. 230 OHS. 231 LC. 232 (both) Robin McDonald. 233 (both) LC. **CHAPTER TEN:** 236-237 Reggie Lankford. 238-239 Reggie Lankford. 240 LC. 241 OHS. 242 OHS. 243 OHS. 244 OHS. 245 LC. 246 LC. 247 LSB. 248-249 LC. 249 (above) PD. 251 (above) LC; (below) OHS. 251 (below) OHS. 252-253 LC. 253 (above) PD; (below) LSB. 254 (above) LC; (below) PD. 256 OHS. 257 OHS. 258 OHS. 259 OHS. 260 LC. 261 OHS. 262 (above and below right) Robin McDonald; (below left) LC. 263 Robin McDonald. **CHAPTER ELEVEN:** 266-267 LSB. 268-269 LSB. 270 LC. 271 OHS. 272 (both) OHS. 273 (above) LC; (below) OHS. 274 (above) OHS; (below) LC. 275 OHS. 276 (below) LC. 276-277 OHS. 277 (below) OHS. 278 OHS. 279 OHS. 280 (above) LSB; (below) OHS. 281 LSB. 282 OHS. 284 (all) OHS. 285 OHS. 286-287 (all) OHS. 288 OHS. 289 OHS. 291 (both) Lawton Heritage Association. **CHAPTER TWELVE:** 294-295 LSB. 296-297 LSB. 298 OHS. 299 OHS. 300 (below) OT. 300-301 LC. 301 (below) Robin McDonald. 302 LC. 303 LC. 304 (both) OHS. 305 OHS. 306 (below) Robin McDonald. 306-307 LC. 307 (below) OHS. 308 OHS. 309 OHS. 310-311 OHS. 312 (above) OHS; (below) LC. 313 LC. 314 OHS. 315 OHS. 316 Reggie Lankford. 317 OHS. **CHAPTER THIRTEEN:** 320-321 Robin McDonald. 322-323 Robin McDonald. 324 OHS. 325 (above) OHS; (below) NARA. 326 LSB. 327 OHS. 328 (both) OHS. 329 OHS. 330 OHS. 331 (both) OHS. 332 OHS. 333 LSB. 334-335 OHS. 336 OHS. 337 (both) Reggie Lankford. 338 OHS. 339 OHS. 340 OHS. 341 (both) LC. 342 (above) LC; (below) OHS. 343 Robin McDonald. 344 (both) OHS. 345 LC. **CHAPTER FOURTEEN:** 348-349 OHS. 350-351 OHS. 352 OHS. 353 (above) LC; (below) OHS. 354 OHS. 355 OHS. 356 OHS. 357 OHS. 358 OHS. 359 (both) WC. 360 OHS. 361 OHS. 362 (above) LSB; (below) OHS. 363 (both) OHS. 364 WC. 365 LC. 366 OHS. 367 Atlanta Historical Society. 368 OT. 369 OHS. 370 OHS. 371 (above) OHS; (below) LSB. 372 (above) LSB; (below) Reggie Lankford. 373 (above) WC; (below) LC. 374 LC. 375 Reggie Lank-

ford. **CHAPTER FIFTEEN:** 378-379 LSB. 380-381 LSB. 382 LC. 383 LC. 384 (both) WC. 385 OHS. 386 LC. 387 LC. 388 OHS. 389 (both) LC. 390 (both) LC. 391 Corbis. 392 Atlanta Historical Society. 393 OHS. 394 (above) OHS; (below) LSB. 395 LC. 396 WC. 397 Corbis. 398 LSB. 399 OHS. 400 (above) LC; (below) OHS. 401 OHS. 402 Corbis. 403 NASA. **CHAPTER SIXTEEN:** 406-407 Currie Ballard. 408-409 Currie Ballard. 410 (both) WC. 411 Currie Ballard. 412 Currie Ballard. 413 NARA. 414 NARA. 415 (above) U.S. Navy; (below) LC. 416 NARA. 417 LC. 418 Americans for Indian Opportunity. 419 Corbis. 420 WC. 421 Reggie Lankford. 423 Robin McDonald. 424-425 Robin McDonald. 426 (above) Robin McDonald; (below) Reggie Lankford. 427 NASA. 428 (both) NASA. 429 (above) WC; (below) CC. **CHAPTER SEVENTEEN:** 432-433 Reggie Lankford. 434-435 Reggie Lankford. 436 (above) WC; (below) LSB. 437 (above) LSB; (below) WC. 439 Reggie Lankford. 440 WC. 441 Reggie Lankford. 442 Reggie Lankford. 443 Robin McDonald. 444 (above) WC. 444-445 LC. 445 (above) LC; (below) Robin McDonald. 446 (both) FEMA. 447 NOAA. 448 WC. 449 (both) WC. 450 WC. 451 (above) Oklahoma State Department of Education; (below) Robin McDonald. 452 U.S. Air Force. 453 (above) Reggie Lankford; (below) WC. 454 Reggie Lankford. 455 Reggie Lankford. 456 (both) OT. 457 Michael Wallace/CC. 458 Corbis. 459 (above) Steve Jurvetson/CC; (below) WC. 460 (above) CC; (below) WC. 461 WC. **CHAPTER EIGHTEEN:** 464-465 Reggie Lankford. 466 Reggie Lankford. 467 OT. 468 (above) LC; (below) OT. 469 (above) Red Earth Festival/CC; (below) Robin McDonald. 470 (both) Reggie Lankford. 471 OT. 472 OT. 473 OT. 475 (both) Reggie Lankford. 476 (above) WC; (below) Reggie Lankford. 477 (above) Reggie Lankford; (below) Melissa Baldwin/CC. 478 Reggie Lankford. 479 (above) Reggie Lankford; (below) Robin McDonald. 480 (above) Reggie Lankford; (below) Wolfgang Sauber/CC. 481 Robin McDonald. 482 (both) Reggie Lankford. 483 Red Earth Festival/CC. 484 OT. 485 (both) Robin McDonald. 486 Robin McDonald. 487 (above) WC; (below) Robin McDonald. **CHAPTER NINETEEN:** 490-491 Robin McDonald. 492-493 Robin McDonald. 494 LSB. 495 (above) LSB; (below) PD. 497 LSB. 498 Reggie Lankford. 499 Reggie Lankford. 500 LSB. 501 Reggie Lankford. 502 LSB. 503 LSB. 504 Reggie Lankford. 505 Reggie Lankford. 506 CC. 508 Reggie Lankford. 509 Reggie Lankford. **APPENDICES:** 513 (left and center) OT; (right) LSB. 514 (all) Robin McDonald.

